



ARLINGTON  
VIRGINIA

# New Solid Waste Services Contract Implementation

## New Contract Begins July 1, 2014

- Trash Collection
- Recycling Collection
- Yard Waste Collection & Yard Waste Cart
- E-waste Collection
- White Goods/Metal Collection
- Cart Management
- Processing (recyclables, e-waste)



ARLINGTON  
VIRGINIA

# History

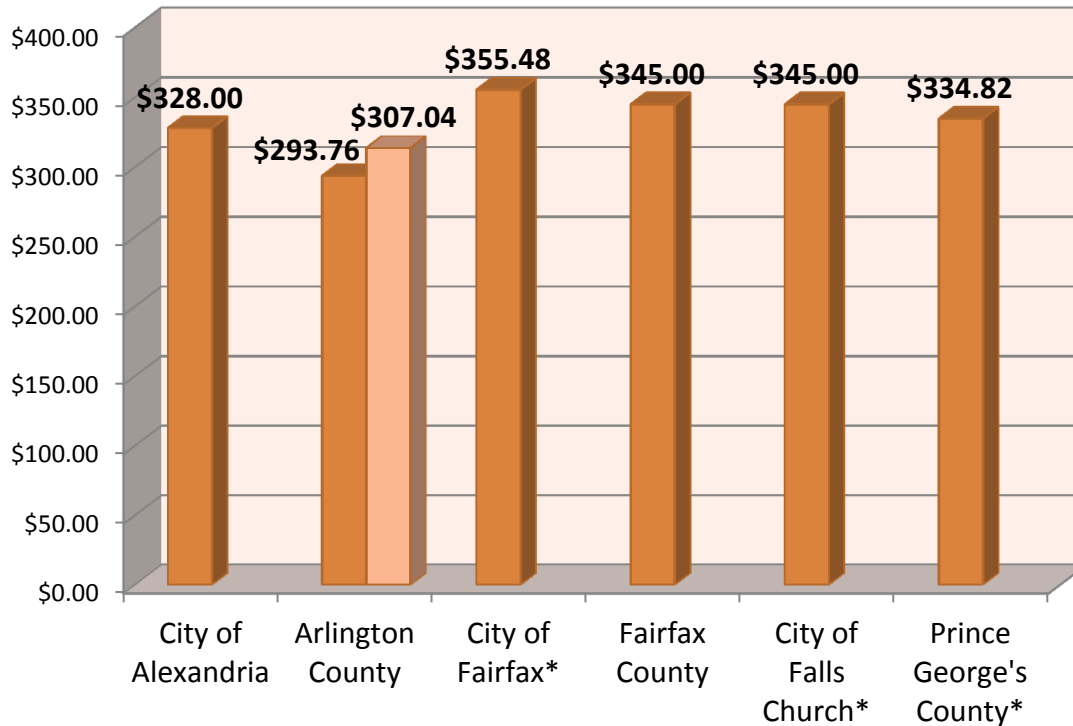
# Why Compostables Collection?

- SWMP recommended voluntary enhancements
  - Yard waste collection in FY 2012
  - Food waste collection in FY 2015
- The public wants it (PLACE Initiative, “Informed/Consulted”)
  - 2012 Solid Waste Study (random sample of 1,340 residents)
    - 94.3% strongly or somewhat agreed that “it is important for the County to be ‘green’”
    - 91.7% were supportive or neutral towards the addition of year-round yard waste collection
    - 79.4% were supportive or neutral towards the addition of food waste and yard waste collection in the same cart
    - 78% thought that the recycling and solid waste services in the County were a good “value”
    - 62% reported they were unaware of how much they paid for services and those that were aware believed that they were paying, on average, \$104 per quarter
  - Focus Groups- 18 Civic Associations’ Representatives participated
    - Support year-round yard waste collection with the understanding that food waste collection would be added later
    - All participants supported the addition of a third cart
  - 2013 Open Arlington Citizen Survey (1,414 self-selected survey respondents)
    - 92.9 % supported year-round yard waste collection
    - 62.2% of those wanted year-round yard and food waste collection
    - 59.1% wanted yard waste cart (based on 572 responses)
- Zero Waste Goal (can’t get there without it)

- 2012 Survey: Services Survey
- 7-28-13: Met w/ C.F. Executive Council
- 8-27-13 & 8-29-13: Focus groups w/ C.F. reps
- Aug/Nov online survey-link sent to all C.A. presidents, listserv, twitter/facebook posts
- 10-1-13: Briefed C.F.
- Briefed County Staff- Winter 2014
- Briefed County Board members- Mar/Apr 2014

# Regional HSWRs

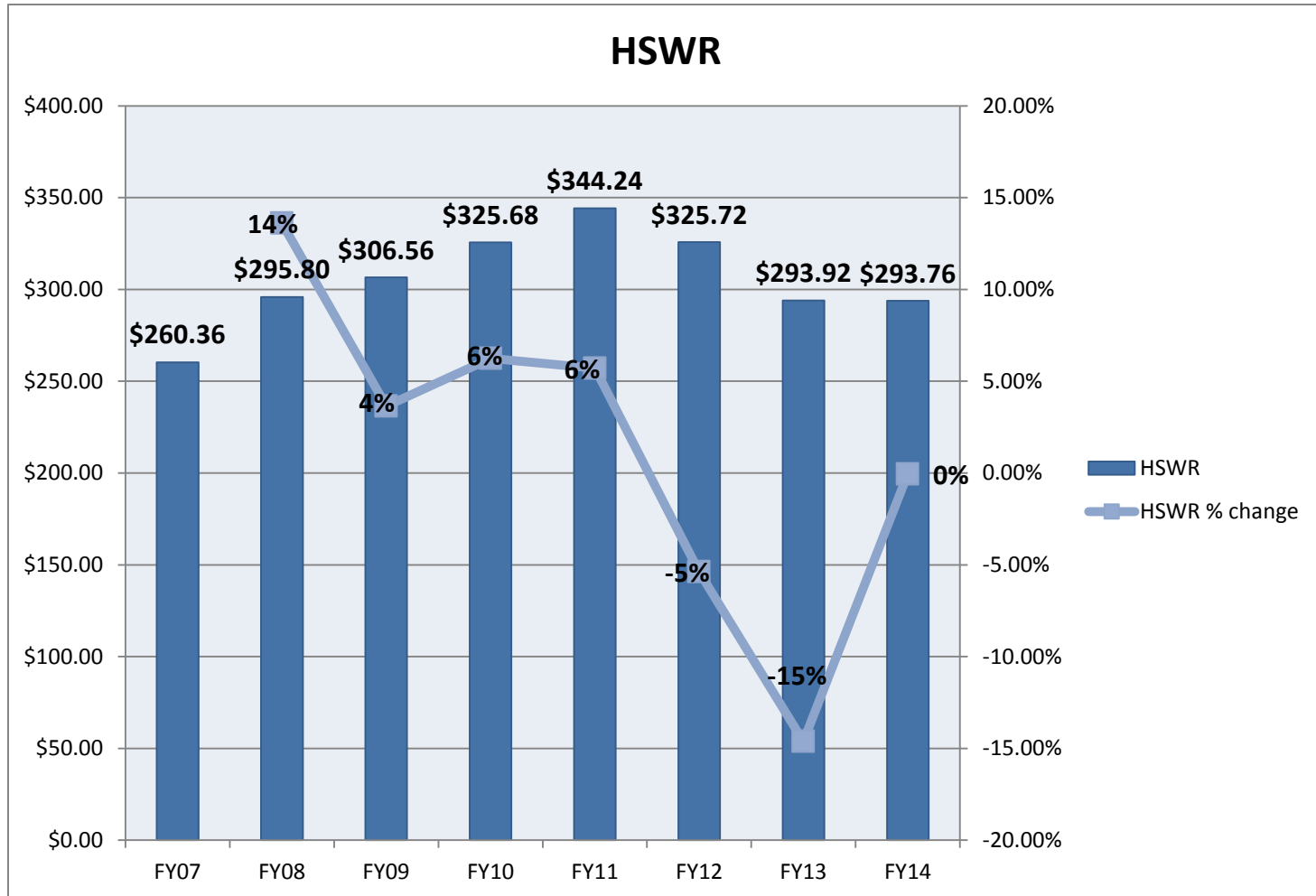
**FY13/14 Annual Rates**



Jurisdiction	Year-Round Yard Waste Program
<b>Virginia</b>	
City of Alexandria	No
Arlington County	No
City of Fairfax	Yes
Fairfax County	Yes
City of Falls Church	Yes
Town of Leesburg	Yes
<b>Maryland</b>	
City of Bowie	No
City of College Park	Yes
City of Frederick	Yes
Frederick County	Yes
Montgomery County	Yes
Prince George's County	Yes

\*FY13 Rates

# HSWR Over Time



# Greenhouse Gas Impacts

GHG Savings from 100% Diversion of Residential Curbside Yard Waste from WTE\*:

	<b>CURBSIDE YARD WASTE*</b> <b>to Loudoun Composting Loudoun County, VA</b>
<b>GHG Emissions (MTCO<sub>2</sub>E)</b>	-268
<b>GHG Emissions (MTCE)</b>	-73

\*Based on EPA WARM model results for 9,246 tons yard waste derived from 2013 SWB audit results.

MTCO<sub>2</sub>E=metric tons of carbon dioxide equivalent  
MTCE=metric tons carbon equivalent

The EPA Waste Reduction Model (WARM) shows that taking yard waste to a composting facility generates less GHG emissions than taking it to the WTE/incinerator.

**For YARD WASTE, this is equivalent to...**

- Removing annual emissions from 53 Passenger Vehicles
- Conserving 30,031 Gallons of Gasoline
- Conserving 11,162 Cylinders of Propane Used for Home Barbeques
- Conserving 1 Railway Cars of Coal





ARLINGTON  
VIRGINIA

# Recycling Potentials

## Current Residential System CY 13 Recycling Rate = ~49.4%

\*Percentages by weight based on SWB's 2013 averaged waste audit results



## Addition of Yard Waste Collection

Recycling Rate Potential = 62.7%  
(RRP = 71.8% with Single-Stream Recycling)

\*Percentages by weight based on SWB's 2013 averaged waste audit results



## Addition of Yard Waste & Food Waste Recycling Rate Potential = 78.7%

(RRP = 87.8% with Single-Stream Recycling)

\*Percentages by weight based on SWB's 2013 averaged waste audit results



County Board Adopted new Household  
Solid Waste Rate of \$307.04 at April 22,  
2014

County Board Meeting



ARLINGTON  
VIRGINIA

# Implementation

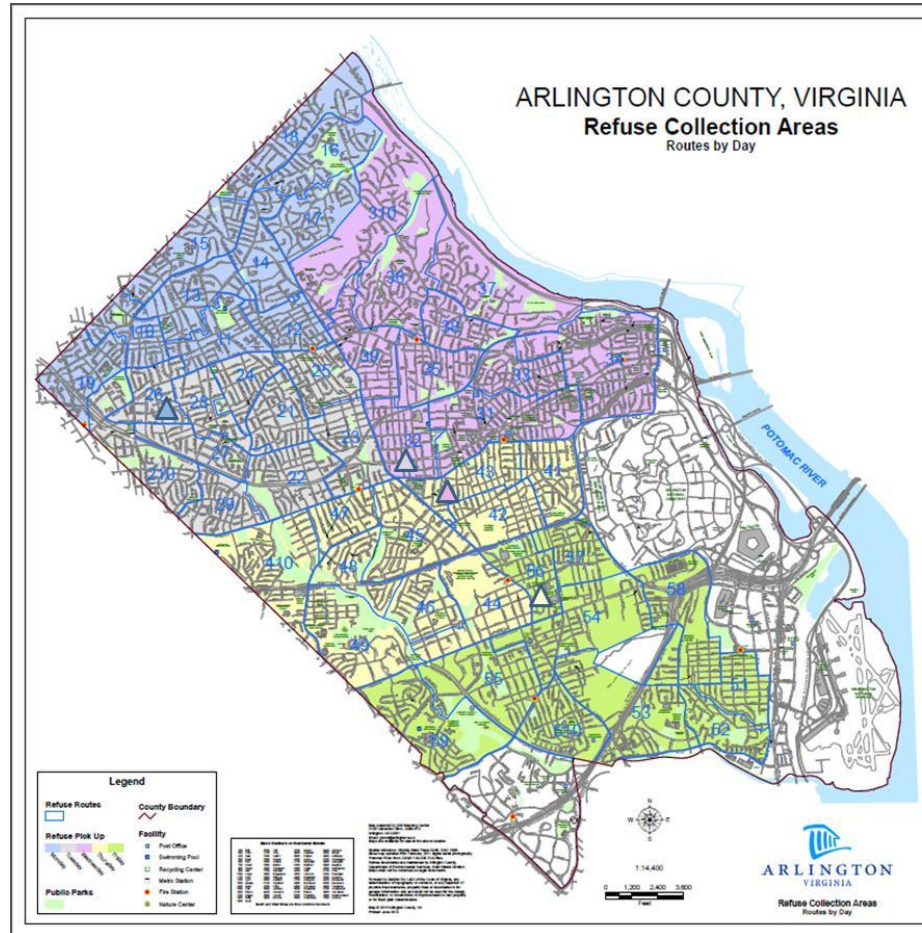
- New service provider for trash, recycling, e-waste, white goods/metal, and yard waste collection w/ cart
- May result in a change in the time of day that services are delivered
- Service Request options remain the same (IVR/IWR, Call Center (703-228-6570), ArlingtonVA App)
- All CNG collection fleet

# Implementation Outreach

- Website information updated
- Letter to each HSWR customer explaining service change and new program
- ArlingtonVA App. Report Issues. Get info. Opt out of organics cart or change size
- Letter to 2,600 HSWR customers who will see service day changes
- Letter to landscape companies explaining program requirements
- Postcard to 2,600 HSWR customers who will see service day changes
- Frequently Asked Questions (FAQs): published on website
- Cart hanger w/magnet distributed to each HSWR customer with new yard waste cart
- Email to listserv members
- Social media announcements



# Service Day Changes



	Monday	Tuesday	Wednesday	Thursday	Friday	TOTAL
Current House Count	5,806	6,453	6,654	6,764	7,470	33,147
Old Route/New Route		26 to 111	32 to 26	43 to 32	56 to 43	
Count Change by Day	+651	+53	-51	-3	-650	2,658
New House Count	6,457	6,506	6,603	6,761	6,820	33,147

# Yard Waste Carts

- Residents will receive a new, green, wheeled, compostables cart in accordance with the following:
  - Single family homes – 64-gallon cart
  - Townhouses with exterior yards maintained by resident – 32-gallon cart
- Yard Waste cart is important to establish habits needed for a full-scale commingled organics collection program.
- 64-gallon cart will hold the equivalent of about four of the paper yard waste bags; residents may continue to set out any additional yard waste in personal containers, paper bags, or tied bundles.
- Until the yard waste carts are distributed, a limited number of brown paper bags will be made available at 2 locations in the County (SWB and CHP). Quantities will be limited for the 12 weeks, June 23<sup>rd</sup>-Sept 12<sup>th</sup>. Limited to 36,000 bags.
- Carts are anticipated to be delivered in the Aug/Sep timeframe.
- Once yard waste carts are distributed, brown paper bags will only be provided by the County during the fall leaf collection season.
- Yard waste will be banned in the trash.
- PLASTIC bags will not be allowed for organics since plastic is not compostable.





ARLINGTON  
VIRGINIA

Questions?