

Arlington County Fire Department



MISSION: We serve the community with compassion, integrity and commitment through prevention, education and a professional response to all hazards.

VISION: We are a responsive and progressive organization. We commit to excellent leadership and professional accountability. We will achieve this through effective training, technology, and adapting to the changing needs of the community.

VALUES: *Tradition , Professionalism, Diversity, Leadership, Integrity, Consistency*

History



- 1927-1st county Fire Marshal appointed
- 1937-1st county Fire Chief
- 1940-Paid Firefighters
- 1970's-1st female career firefighter in the U.S.
- Paramedics (2nd ALS agency in Virginia)



The Current Fire Department



- Under the leadership of Fire Chief James Schwartz
- 10 Fire Stations



- Approximately 300 Personnel
- Fire and EMS

Our Current Department



- Rank Structure
- Facilities
- Capabilities
- Training
- Response Data

Rank Structure



- Fire Chief (1)
- Assistant Chief, Operations (1)
- Assistant Chief, Support Services (1)
- Battalion Chief (12)
- Captain I, Captain II (49)
- Lieutenant (36)
- Firefighter/EMT (202)

17 non-uniformed administrative and support personnel (includes 5 code inspectors)

Facilities



- 10 Fire Stations
- Training Academy
- Fire Marshals Office
- Logistics
- Administrative Offices



Capabilities



- Fire Suppression: ISO Class 2 Rating-Highest in Virginia
- Emergency Medical Services: All Firefighters and Medics are Cross-Trained, Dual-Role Responders
- SWAT/Tactical Medics
- Fire Prevention: Inspections, Systems Testing, Investigations & Bomb Team
- Technical Rescue Team (TRT)
- Hazardous Materials Response Team

Training



- Recruit School: 24 weeks of intensive Fire, Rescue and EMS training, instruction and physical conditioning
- Off-Site Training for various specialty functions (Hazardous Materials Technician, Paramedic, etc.)
- Continuing Education:
 - Monthly Hazmat Drill
 - Monthly Technical Rescue Training
 - Monthly Continuing Medical Education (CME)
 - In-service and Operations Training (Daily)
 - Physical Fitness Training (Daily)

Training

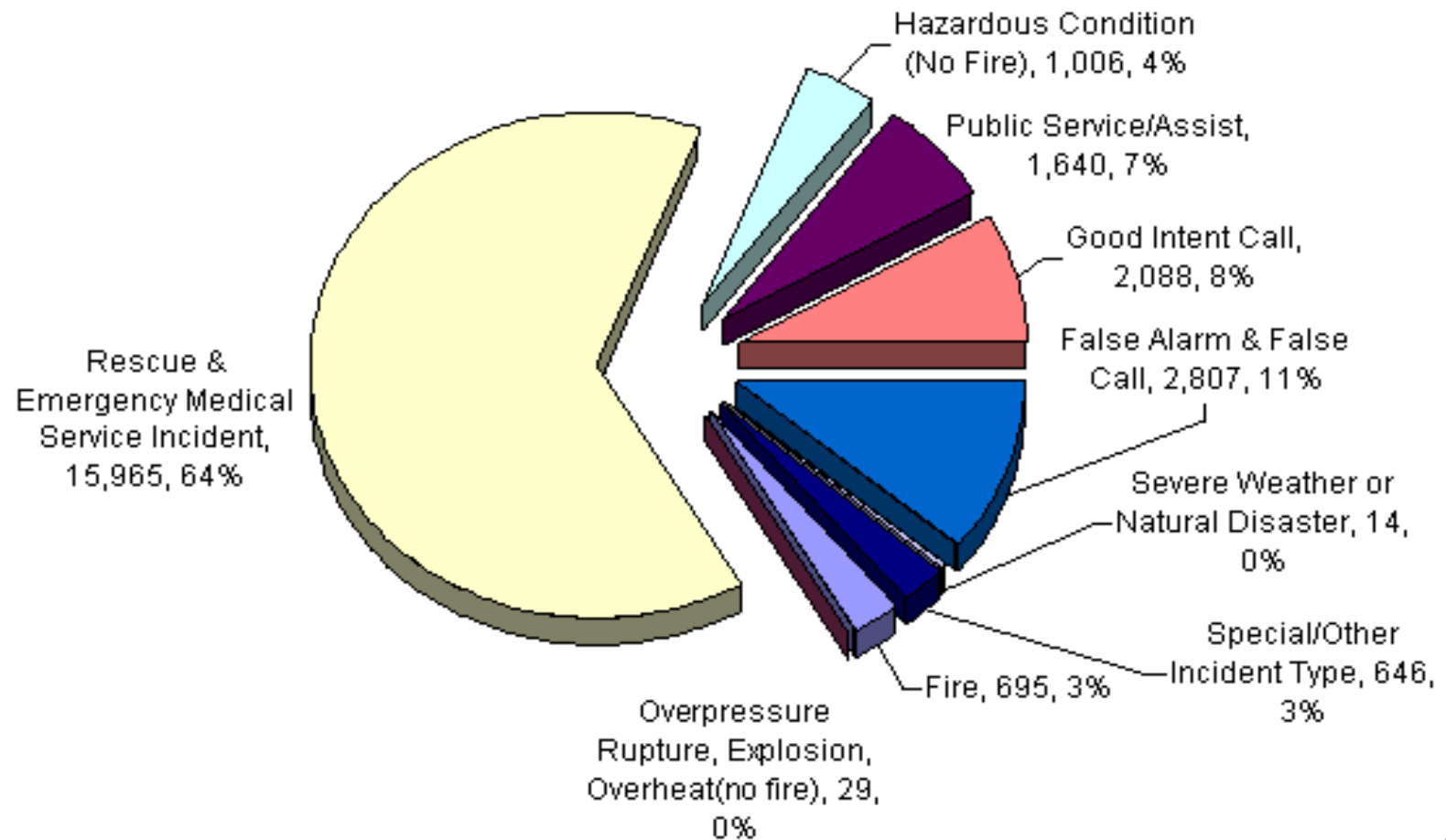




Response Data

Arlington County Fire Department

CY 2010 Calls For Service



Northern Virginia Mutual Aid

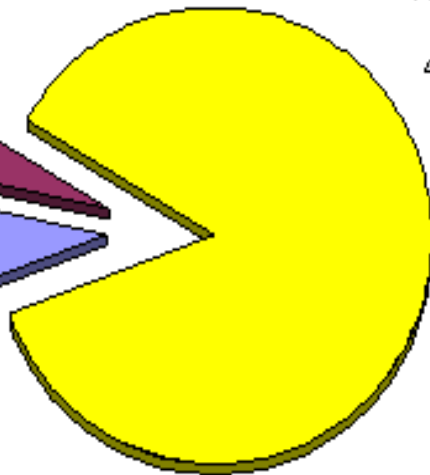


CY 2010 Fire Units In/Out of Arlington/Falls Church

Arlington Units
Out of
Arlington/Falls
Church, 2,861,
5%

Arlington Units
In
Arlington/Falls
Church,
49,156, 86%

Outside Units
Coming Into
Arlington/Falls
Church, 5,038,
9%

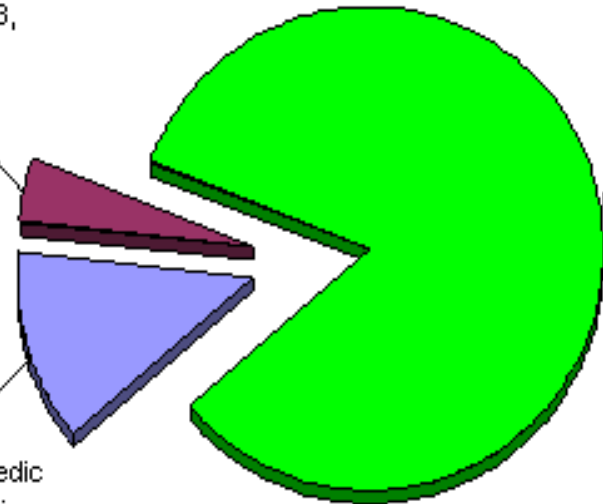


CY 2010 Medic Units In/Out of Arlington

Arlington
Medic Units
Out of
Arlington/Falls
Church, 863,
4%

Arlington
Medic Units in
Arlington/Falls
Church,
16,637, 83%

Outside Medic
Units Coming
Into
Arlington/Falls
Church, 2,542,
13%



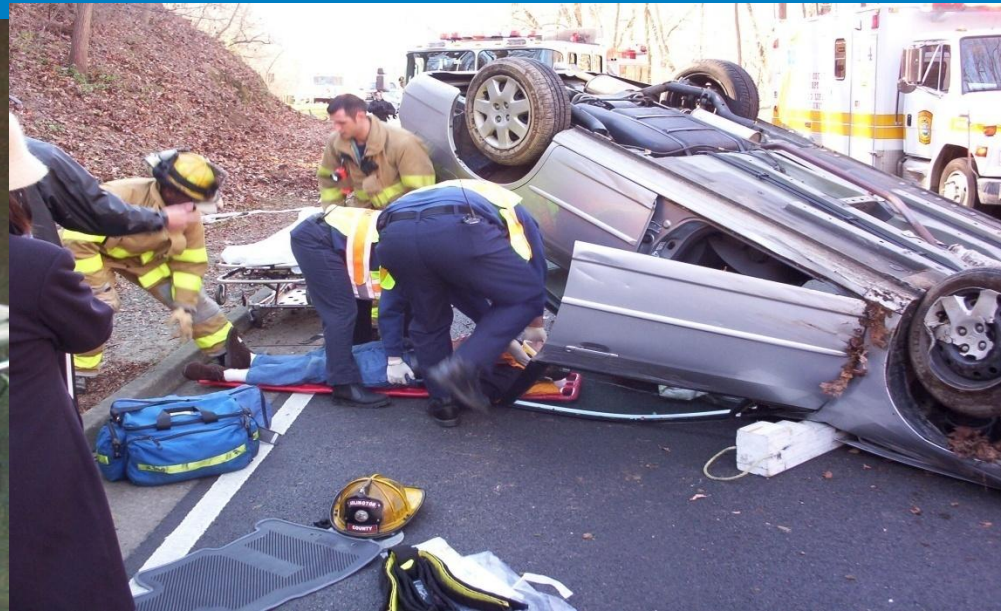
Arlington Fire Units in Action



Emergency Medical Services



- All Firefighters Cross-Trained as EMT's
- 1/3 are Paramedics
- Medic Units Housed at 7 of 10 Stations
- All Fire Apparatus Equipped and Staffed to Provide Patient Care
- Fire and EMS Services are Seamless



Specialized Services: Bomb Disposal Unit



Fire Prevention Office:
On duty & on-call Fire Marshals
with advanced training



Specialized Services: Technical Rescue



Specially
Trained
Personnel at
Stations 4 & 10



- Structural Collapse
- Trench Rescue
- Confined Space
- High-Angle
- Vehicle Rescue

Specialized Services: Hazardous Materials



Specially Trained Personnel At Stations 1 & 9

- Transportation Incidents
- Spills, Leaks
- WMD



Apparatus



- Purchase/buyback program ensures best value for the county
- Fire Apparatus Replacement reduces maintenance costs and improves safety





Apparatus



Engine Company

- 9 Engines
- 4 Personnel
- 2800 feet of hose
- 750 gallons water
- All are EMS capable
- Most staffed with Firefighter/Paramedics



Apparatus

Truck Company

- 3 ladder trucks
- Trucks 105 & 106
- Tower 104
- 3 - 4 personnel
- Ground ladders
- 100' aerial ladder
- Ventilation
- Search & Rescue





Apparatus

Rescue Company

- 2 Rescue Squads
- Rescue 104 & 109
- 3 - 4 Personnel
- Forcible Entry
- Search & Rescue
- Extrication
- Hazardous Material Operations
- Technical Rescue Operations





Apparatus



Medic Units

- 7 Medic Units
- Advanced Life Support
- Critical care treatment, stabilization & transport





Apparatus



Other Specialty Apparatus

- Battalion Chief
 - 2 Battalion Chiefs
- Command Aide
 - 1 Command Aide
- Duty Fire Marshal
 - 1 Duty Fire Marshal
- EMS Supervisors
 - 2 EMS Supervisors



Apparatus

Other Specialty Apparatus

- Mass Casualty Support Unit
- Mobile Command Vehicle
- Medical Ambulance Bus
- Ordnance Disposal Unit
- Mobile Air Unit

Special Considerations



- Pentagon
- Highway, Rail, Metro
- High-rise buildings: Affect response times; Resource intensive
- Population density: Arlington comparable to Los Angeles & Baltimore; Approximately 8100/square mile
- Region: High degree of cooperation, interoperability, mutual reliance
- Recruitment/retention: An on-going challenge in this very competitive regional hiring environment
- Succession planning: High-level attrition, loss of experience anticipated
- A flexible, responsive approach to community involvement

Looming Issues



A few of the significant issues facing our department this year:

- Strategic Advisory Team (SAT) *Organizational development*
- Construction of new Fire Station #3
- Construction of new Logistics facilities
- Succession planning for anticipated senior-level attrition in 2012



Your Neighborhood Fire Station



Station Number	Location	Address	Phone	Station Commander	Email
1	Glebe Road	500 S. Glebe Rd. 22204	703-228-0101	Captain II Steve Vitalie	Svital@arlingtonva.us
2	Ballston	4805 Wilson Blvd. 22203	703-228-0102	Captain II Randy Higgins	Rhiggi@arlingtonva.us
3	Cherrydale	3900 Lee Hwy. 22207	703-228-0103	Captain II Joe Lightfoot	Jlightfoot@arlingtonva.us
4	Clarendon	3121 10 th St, N. 22201	703-228-0104	Captain II John Delaney	Jdelan@arlingtonva.us
5	Crystal City	1750 S. Hayes St. 22202	703-228-0105	Captain II Bob Patterson	Rpatte@arlingtonva.us
6	Falls Church	6950 Little Falls Rd. 22213	703-228-0106	Captain II Nick Salameh	Nsalam@arlingtonva.us
7	Fairlington	3116 S. Abingdon St. 22206	703-228-0107	Captain II Rudy Eversburg	Reversburg@arlingtonva.us
8	Halls Hill	4845 Lee Hwy. 22207	703-228-0108	Captain II Mike Kilby	Mkilby@arlingtonva.us
9	Walter Reed	1900 S. Walter Reed Dr. 22204	703-228-0109	Captain II Matt Herbert	Mherbe@arlingtonva.us
10	Rosslyn	1554 Wilson Blvd. 22209	703-228-0110	Captain II Nathan Miller	Nmille@arlingtonva.us



*Serving our Community
Proudly*