



# Emergency Management & Technology

June 3, 2008



# OUR ABILITY TO COMMUNICATE

- **Switch Technology** IP Based (Motorola 7.1)
- **Over the Air Protocol** APCO 25
- **Trunking Standard** APCO 25
- **Control Channel Rate** 9600 Baud
- **Voice Channel Mode** Digital
- **APCO 25 Features** YES
- **Data Capability** YES IV&D, HPD, WB
- **Production/Availability** 08/2004
- **Interoperability** Via Motobridge

# Technology and its role in EM

## ■ Arlington's Systems

- CAD/GIS interoperability
- I-net
- MDT's in cruisers
- Multiple RMS systems
- Video down links
- Portable Rack System
- Technology/EM Bus
- Watch Desk
- WebEOC
- EMNET
- Satellite Connections

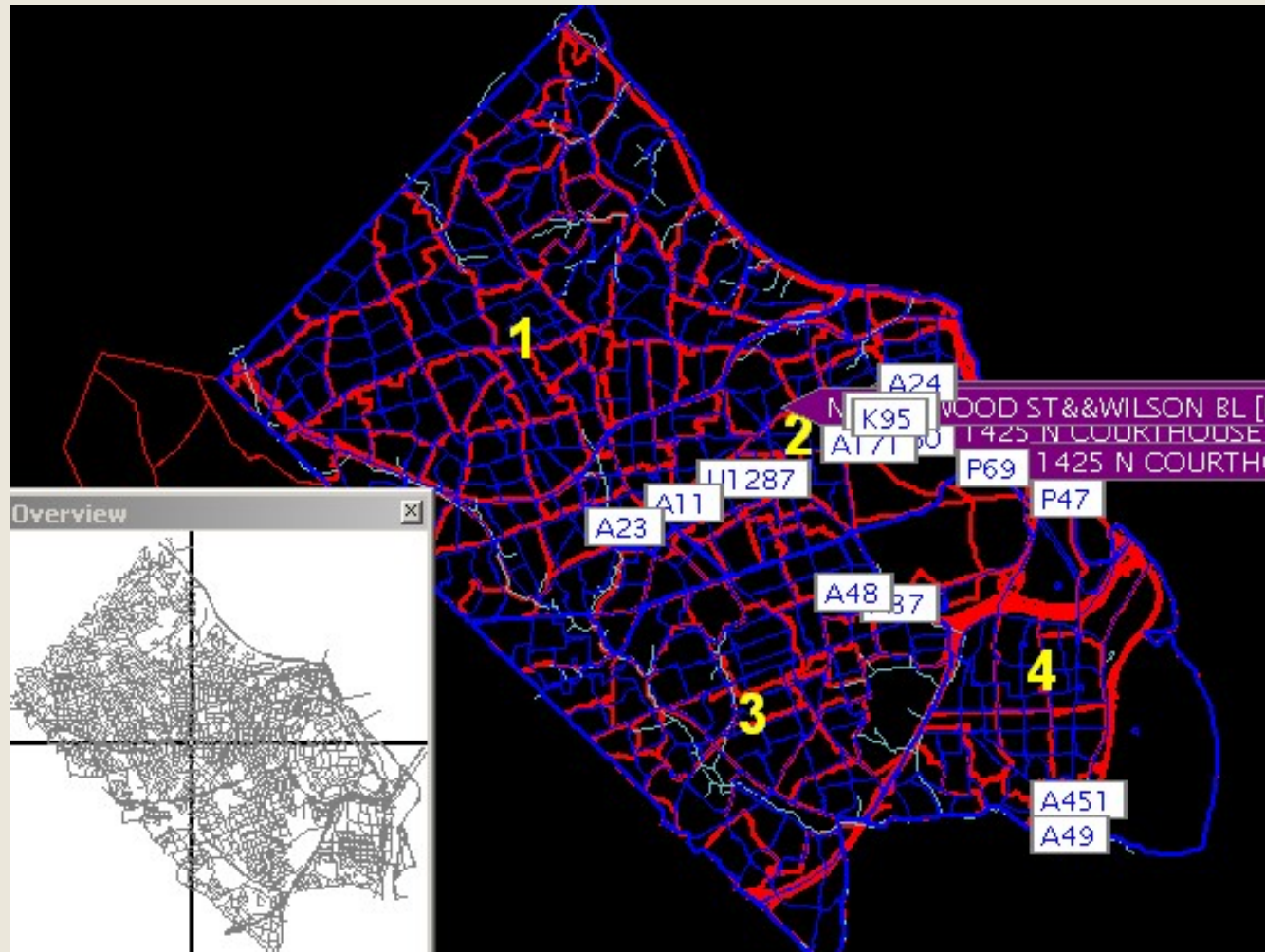
# New ECC



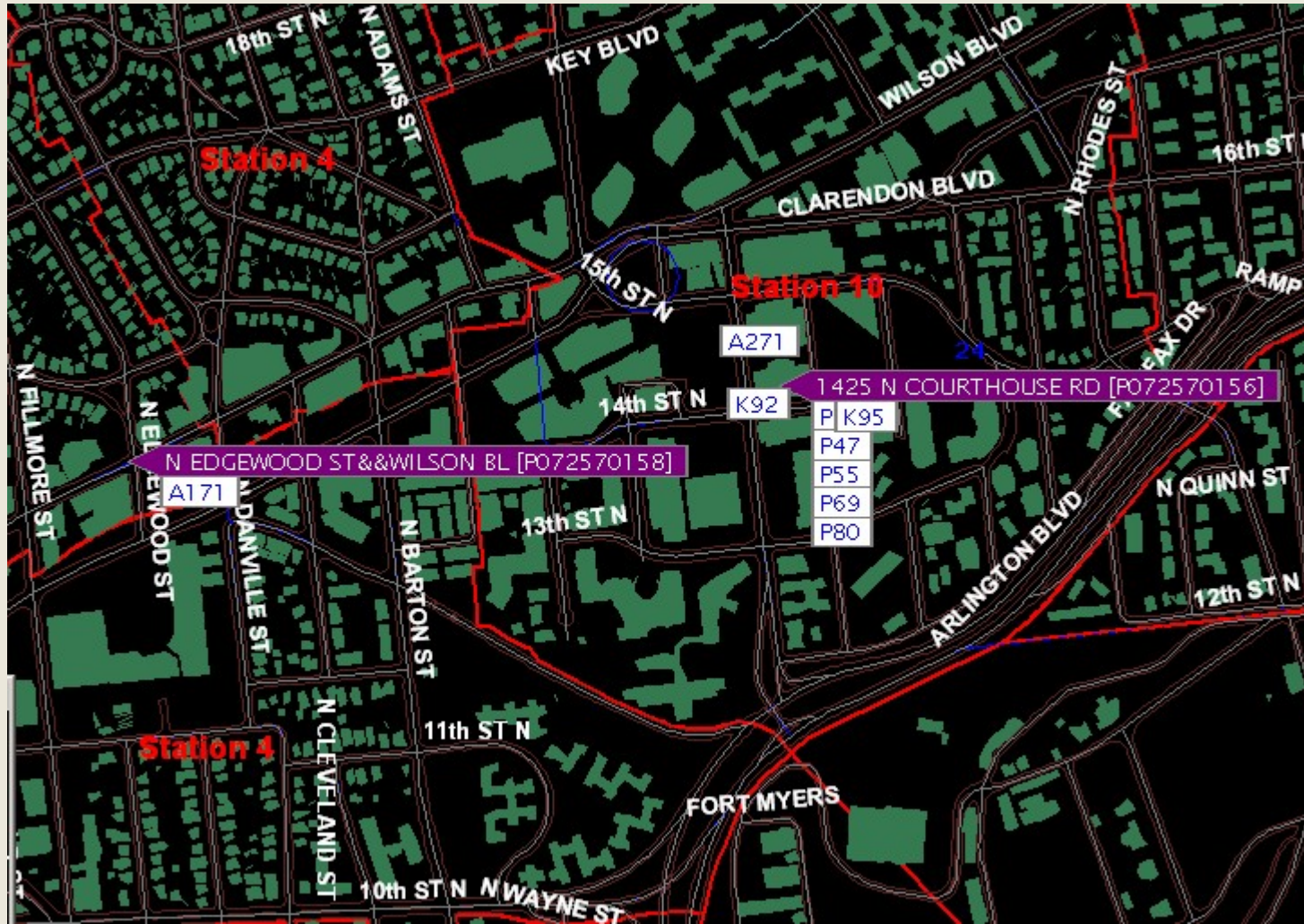
# New ECC



# Automatic Vehicle Location



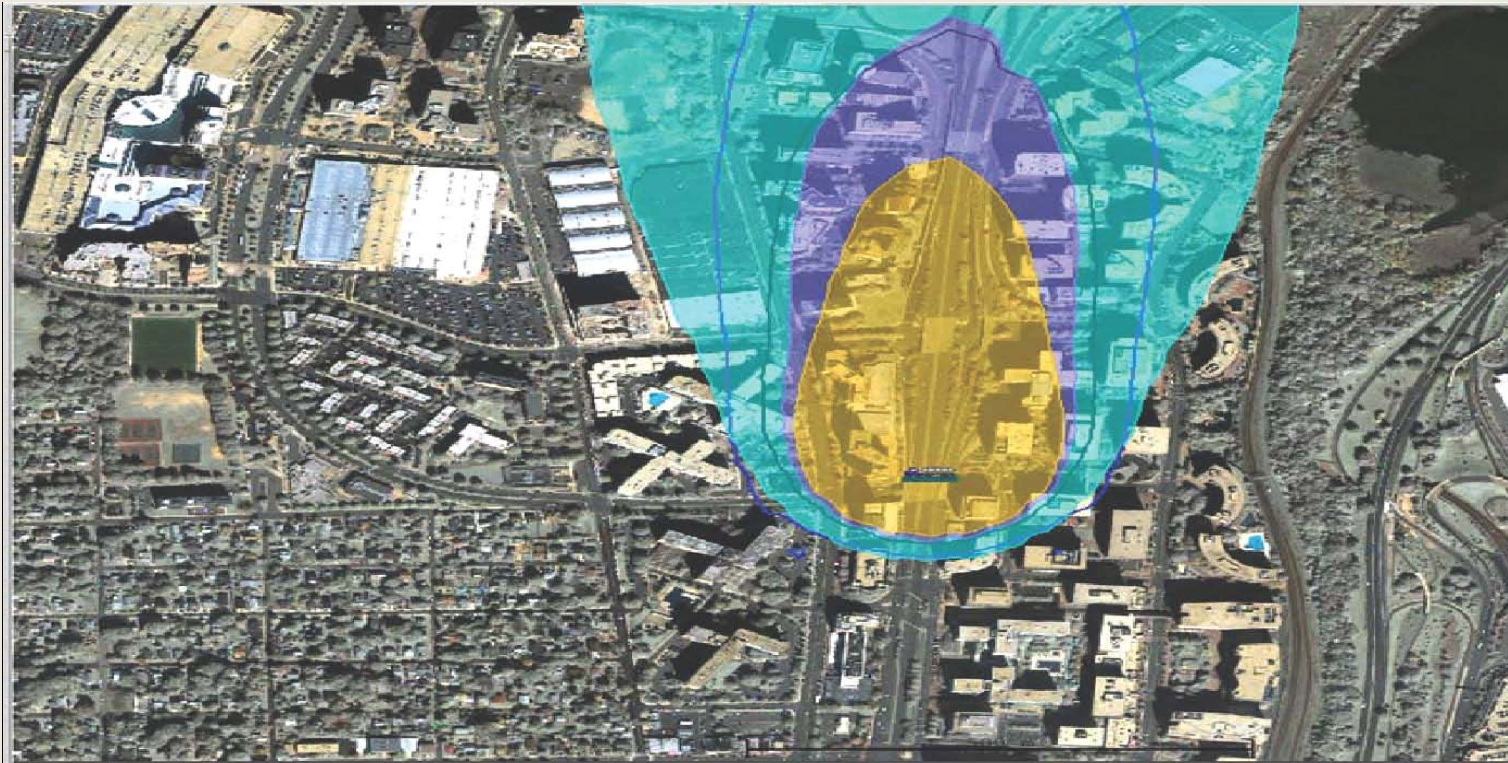
# Automatic Vehicle Location



## Beyond AVL

- Three dimensional GIS mapping capabilities
- Capacity to track personnel
- Link GIS, accountability, and telemetry to monitor first responders

# Relationship with Monitoring Systems



DTG	91707	TYPE:	Surface Dosage
WX:	Wind from the South (180) at 5 mph		
AGENT/QTY:	Hydrogen Cyanide 1500 Gal	H+	8 hours
DISPERSION:	Low Pressure Tanker Truck		
	Modeler		
	WDJ		

Hydrogen Cyanide Hazard Area : A  
30-Mar-07 20:13:0  
"Best Estimate" - M  
mg-m

- AEGL-3
- AEGL-2
- AEGL-1

10.0% Pc Excc  
Injury Possible (v  
mg

- 10% AEGL-3
- 10% AEGL-2

FOR OFFICIAL USE ONLY (FOUO)

PLAUSABLE SCENARIO- FOR PREDICTION PURPOSES ONLY-HAZARD PREDICTIO

# The Promise of GIS

- DASHBOARD
- Linking subsystems
- Real time awareness of critical subsystems
- Ability to gather, synthesis, analyze and utilize soloed information –
  - What streets have been plowed
  - Control of signals



Select

Zoom

Pan

Full  
Extent

Step  
Out

Critical Infrastructure  
Affected

5:01:30 AM



**Electrical:**



**Water:**



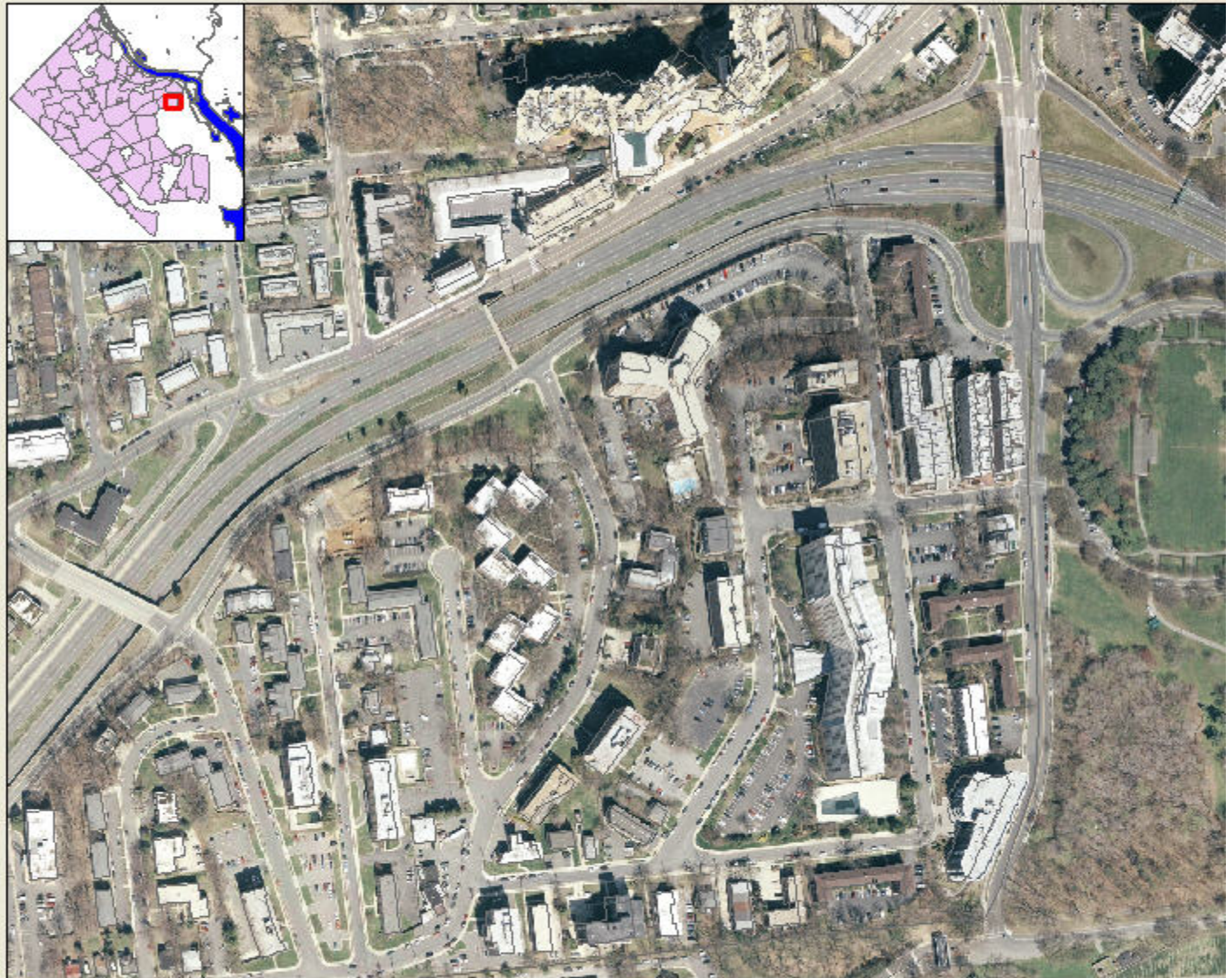
**Traffic:**



**Medical:**



**Fire:**



### Status Summary

Approx 0 customers out of power.

test map load

Connect to Server

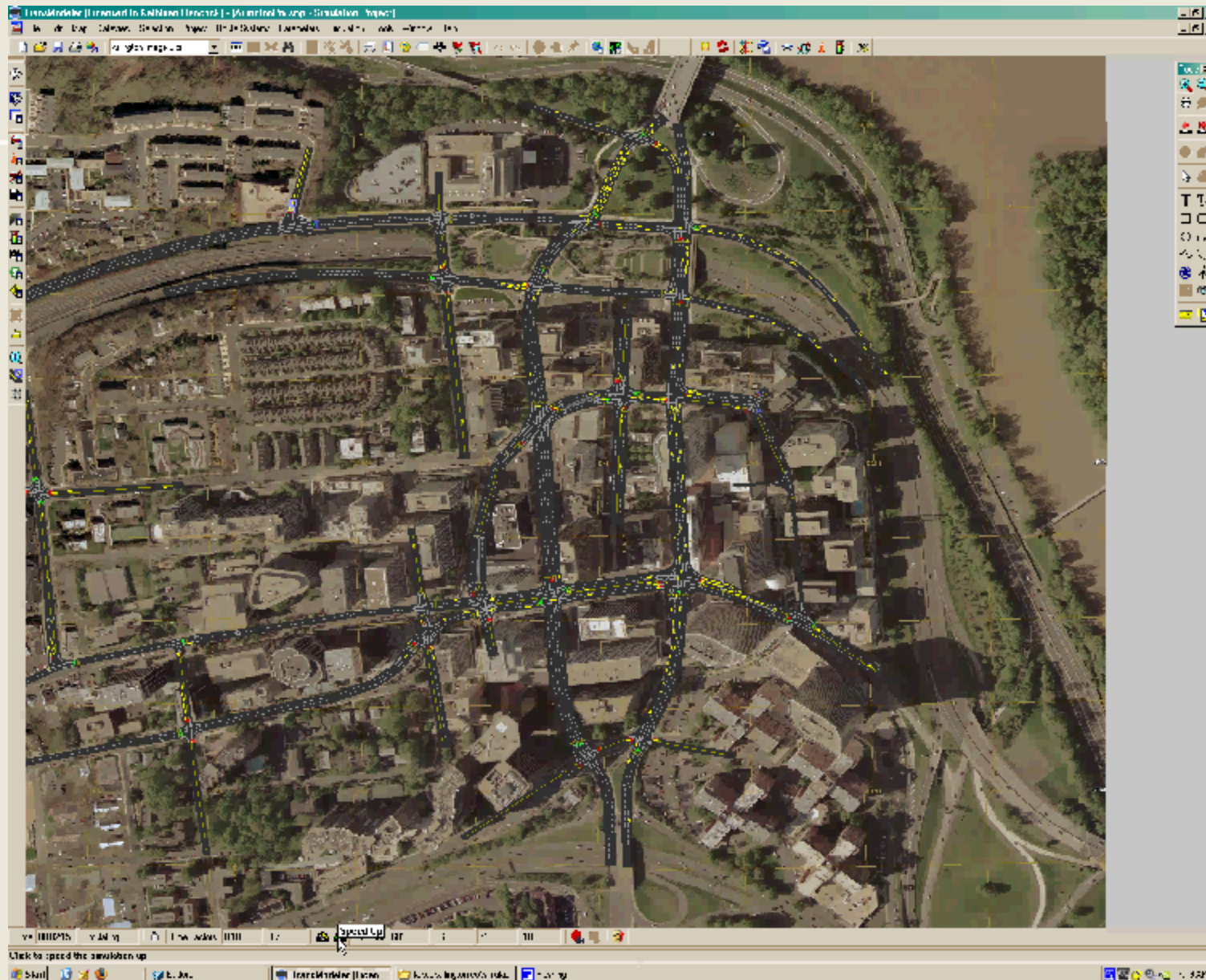
Test data read

Deselect

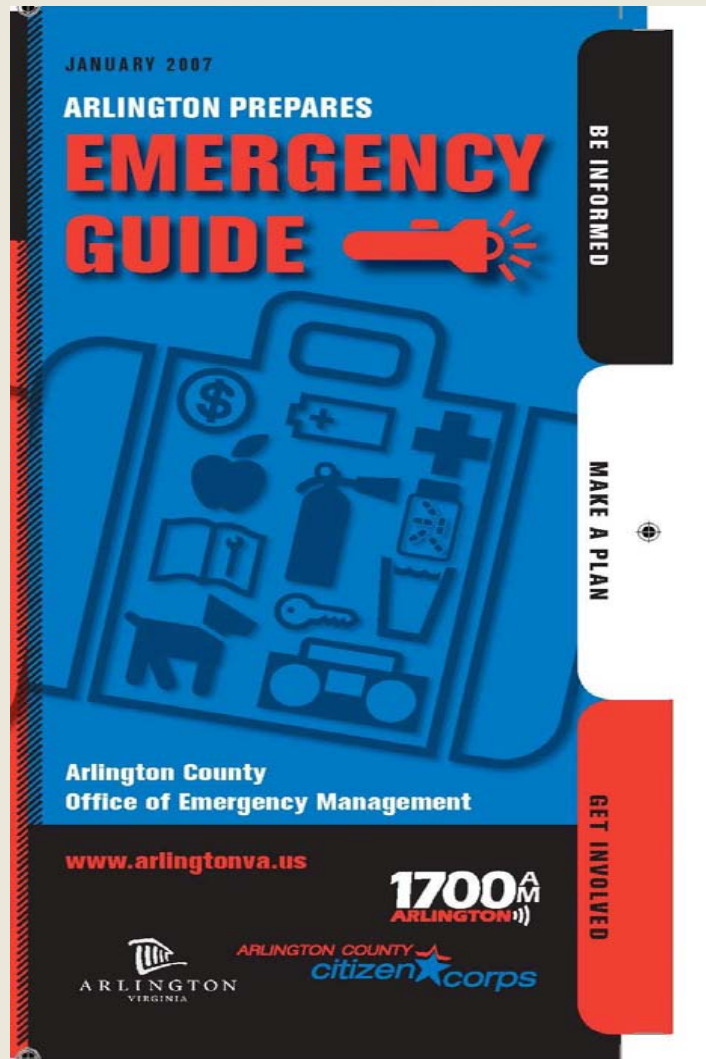
Test find addresses

Reset Time

Test MW trans



# PUBLIC OUTREACH & COMMUNICATIONS



- Emergency Preparedness Guide – English, Spanish, Braille, and Large Print (103,000 mailed to every residence and copies being distributed to every employee in the County)
- Traditional Media Preemption

## PUBLIC OUTREACH & COMMUNICATIONS



**1700<sup>AM</sup>**  
**ARLINGTON** :))

**REVERSE 911**<sup>®</sup>  
INTERACTIVE COMMUNITY NOTIFICATION

**MADAH****COM**

- **Arlington Alert – 23,379 subscribers as of 6/3/2008 and growing**
- **1700 AM Radio**
- **Reverse 911**
- **Outdoor Warning Systems**
- **WiFi Preemption (coming soon)**

# Links to Mass Notification



# Technology and Emergency Management

## Limitations of Technology

- Technology is a tool.
- Can not be viewed as a stand alone solution but a component of solution
- Requires care, feeding, and refreshing
- Integration and constant use are critical
- Realize that technology can not replace knowledge

Robert Griffin, Director  
Office of Emergency  
Management

(w) 703-228-7935

[rpgriffin@arlingtonva.us](mailto:rpgriffin@arlingtonva.us)



ARLINGTON  
VIRGINIA