



April 5 Overview: Arlington County School Board and Revenues & Expenditures Committee Presentation with Resolution Vote

Stefanie Pryor

Our Arlington County Civic Federation (ACCF) meeting Tuesday, April 5, kicks off with selection of our nominating committee for elections later in June. Our first main speakers are the Arlington County School Board. Members have asked for more time to ask questions and get answers, so time for questions will be expanded to 45 seconds and 3 minutes for responses. As always, please remember to announce your name, member organization and one question. The School Board will have 10 minutes for a presentation, with 20 minutes for questions from our Schools Committee, and up to 50 minutes for questions from delegates and alternates.

The Revenues and Expenditures Committee introduced a tax-rate resolution at last month’s meeting. As requested at the March meeting, a clarifying item for existing tax rate was added along with additional footnoting of sources. Please refer to the full text later in the newsletter.

If you missed last month’s session with the County Board, the I-395 HOT lanes, and CarFreeAtoZ presentations, you can watch it at: <https://vimeo.com/152493353>

Arlington County Career Center students, Kyam Muaninudeen and Flor Cáceres-Godoy filmed the ACCF’s March meeting. Ms. Cáceres-Godoy served as editor. Tom O’Day, their Career Center advisor, provided oversight.

The 100th Anniversary Gala is finally here! We have just 40 tickets left as of press time. If you have a reservation, but not yet paid, contact jesse@civfed.org and treasurer@civfed.org as soon as possible. Refer to our website for additional information: <http://www.civfed.org/banquets/>

Our 100th Anniversary Symposium at the Arlington County Central Library happens 6:15—8:30 pm Thursday, April 14. We expect the parking lot to be full because of our event and the Friends of the Library booksale, so please consider public transit and carpooling.

GENERAL MEETING NOTICE
Tuesday, April 5, 2016

7:30 p.m.

Hazel Auditorium
Virginia Hospital Center
1701 N George Mason Drive
Arlington VA 22205

Agenda

- 7:30 Meeting called to order
Nominating Committee
- 7:40 School Board
- 9:00 Revenues & Expenditures Committee and Resolution Vote
- 9:25 Unfinished Business and Announcements
- 9:30 New Business
- 9:35 Adjourn

Inside this issue:

R&E Tax-Rate Resolution	2
ACCF at County Board Mar 12.....	3
Membership Committee.....	3
100th Anniversary Updates	4
School Board Questions	4
MWAA Updates	5
Executive Committee.....	6
Car Free AtoZ.....	6
Committee Chairs	7

Revenues & Expenditures Committee: Real Estate Tax-Rate Resolution

Whereas, the Arlington County Manager proposes a FY 2017 budget with a real property tax of \$0.996 per \$100 of assessed value (no change from FY 2016) (1);

Whereas, the Arlington County Board voted to advertise a maximum real property tax rate of \$0.996 per \$100 of assessed value, or no increase from the prior year (2);

Whereas, due to “unanticipated revenue growth,” the County Manager proposes a “half-cent” reduction, lowering the tax rate from \$0.996 to \$0.991 per \$100 of assessed value (3);

Whereas, the average homeowner will see his/her tax and fee burden for FY 2017 rise from \$7,640 to \$7,859 under the proposed budget—a 3% increase, or about \$219 a year—and will have absorbed a cumulative, 5-year total increase of \$1,113 per year in additional taxes and fees (CY 2012–CY 2016) (4);

Whereas, Arlington County ranks among the top 25% of U.S. counties by property tax collections and ranks 3rd by median property taxes and 27th by median tax as percentage of home value out of 134 Virginia counties (5);

Whereas, the average assessed value of residential real property increased by 6.1% in CY 2014, 5.4% in CY 2015, and 3% in CY 2016—a total of 14.5% (6);

Whereas, in order to offset CY 2016’s increased assessment, the proposed tax rate for FY 2017 would need to be reduced by 2 cents (\$0.02) to deliver the same amount of real estate tax revenue as last year (7);

Whereas, a reduction in the property tax rate makes home ownership and rent more affordable for ALL county residents (8);

Therefore, be it resolved that the Arlington County Civic Federation urges the Arlington County Board to adopt a maximum property tax rate of \$0.986 per \$100 of assessed value, a 1-cent decrease from the advertised rate of \$0.996 per \$100.

Respectfully submitted,

Tim Wise
Revenues & Expenditures Committee

Yea: Burt Bostwick, Duke Banks, Frank Emerson, Roger Morton, Terry Showman, Suzanne Sundburg and Tim Wise

Abstain: Paul Holland

Nay: Jerry Auten

(1) <http://arlingtonva.s3.amazonaws.com/wp-content/uploads/sites/18/2016/02/FY17-proposed-all-in-one-to-post-compressed2.pdf> (book p. 2, web p. 80)

(2) http://arlington.granicus.com/MediaPlayer.php?view_id=2&clip_id=3055&meta_id=139508 (+/-4:20 on time counter)

(3) http://arlingtonva.s3.amazonaws.com/wp-content/uploads/sites/18/2016/02/FY17P_County-Managers-Message2.pdf (book p. 10, web p. 18)

(4) <http://arlingtonva.s3.amazonaws.com/wp-content/uploads/sites/18/2015/11/FY-2017-Proposed-Budget-Presentation-for-Thursday-Board-Briefing.pdf> (p. 13)

and

<http://arlingtonva.s3.amazonaws.com/wp-content/uploads/sites/18/2016/02/Revenue-DTS-AED-Work-Session-03032016-Combined-Deck.pdf> (p. 9)

(5) <http://www.propertytax101.org/virginia/arlingtoncounty>;

(6) <http://arlingtonva.s3.amazonaws.com/wp-content/uploads/sites/18/2016/02/Revenue-DTS-AED-Work-Session-03032016-Combined-Deck.pdf> (p. 16)

(7) <http://content.govdelivery.com/accounts/VAARLINGTON/bulletins/138729f>

(8) <http://www.itep.org/pdf/whopaysreport.pdf> (p. 6, p. 13) and

<http://www.miamiherald.com/news/business/real-estate-news/article5650761.html> (Ron Rosen/FHA quote) and <http://www.syracuse.com/news/index.ssf/2015/01/cuo-mos-latest-property-tax-cut-upstate-homeowners-could-see-700-tax-credit.html>

Rosslyn Plan Building Heights at County Board Meeting March 12

Stefanie Pryor

At the County Board meeting on March 12, 2016, I spoke on the danger Rosslyn building heights pose for airplanes which experience an engine failure while taking off from Reagan National Airport and need to utilize the One Engine Inoperable (OEI) corridor.

I provided the following material to the County Board:

1. ACCF October 2014 resolution on FAA/building heights
2. County staff response
3. ACCF newsletter articles from Joe Pelton for a couple of Metropolitan Washington Airports Authority (MWAA) items from Dec 2015 and Nov 2015.
4. ACCF newsletter Gala page showing the pictures of the radio towers and stop light for cars on Washington Blvd so they would not interfere with plane runway traffic from our Sept 2015 newsletter. I saw County Manager Schwartz passing around the picture to various staff sitting behind him, resulting in some smiles and shaking of heads in disbelief.
5. Screen shot of the Public Services committee webpage with additional articles backing up the points in my speech and the resolution. Those articles came from the Public Services and Planning & Zoning folks' work back in Oct. 2014.

Unfortunately, Phase 4 and 5 county materials reference 390 foot high buildings, with little mention of additional zoning and site plan considerations addressed during the County Board meeting.

<https://newsroom.arlingtonva.us/release/county-board-approves-transformative-rosslyn-redevelopment-plan/>

Refer to the county website for the presentation:

http://arlington.granicus.com/MediaPlayer.php?view_id=2&clip_id=3068. My section begins at approximately 2hrs 5 minutes.

ARLINGTON COUNTY CIVIC FEDERATION

ACCF

PO Box 42091

Arlington, VA 22204

www.civfed.org

Now Accepting PayPal!

<http://www.civfed.org/pay-dues/>

Membership Committee: Update Your Home Address and Email

Every year when we send out snail mail for the banquet, we receive multiple returned letters. If you received your invitation, but it was redirected from a different home address, please notify the membership committee. If you are not receiving the newsletter via email, please let us know. You do not need to be a member organization delegate or alternate to receive the newsletter. We have membership records at our meetings every month. You can also contact membership@civfed.org and president@civfed.org.

For your civic association, please also review your neighborhood contact information listed at:

<http://countyboard.arlingtonva.us/community/civic/>

Different departments within the county maintain different contact lists, unfortunately. You may update your information for transportation notices, but not get updated at site for county board. In case of error, email the Clerk of the County Board, hhalle@arlingtonva.us, with cc to membership@civfed.org and president@civfed.org.

If possible, provide generic email address for officers, which can be handed off to the next person elected. Many civic associations have done this, for example, ahcapresident@gmail.com or penrosepres@yahoo.com.

100th Anniversary Events

After the long wait, the 100th Anniversary Gala is here on Friday, April 8, 2016. We will have a special presentation from WETA's Sharon Rockefeller and Rick Schneider in honor of Elizabeth Campbell. Mrs. Campbell was the founding of WETA and led the campaign to desegregate Arlington School with her husband, Edmund Campbell.

The Festive Gala will include a presentation of the Sun-Gazette Cup Award, the Historic Centennial Award to Elizabeth Campbell, and music and dancing from the band of Manny Arciniega.

The symposium at the Arlington County Central Library Auditorium Thursday April 14th starts at 6:15 pm with a Centennial Tree Planting by Congressman Don Beyer, Co. Board Chair Libby Garvey, and Civic Federation officials. "Arlington: Past, Present and 100 Years into the Future" provides historic tribute awards for civic achievement to:

Arlington Historical Society,

Arlingtonians for a Clean Environment (ACE),

Arlington Parks Coalition,

Committee of 100,

Joint Base Myer-Henderson Hall,

Opera NOVA,

Our Lady Queen of Peace Catholic Church,
and

Virginia Hospital Center.

LAST MINUTE CALL FOR RESERVATIONS :

Tickets for the event are \$40/person and are virtually sold out, but reservations are still being accepted up close of business Tuesday, March 28. Mail checks with food preference (fish, chicken, or veggie pasta) to Pat Spann, Treasurer Arlington County Civic Federation, 100th Anniversary Gala, P.O. Box 42091, Arlington, VA 22204 and also alert Jesse Boeding: jesse@civfed.org and Gala Chair: joepelton@verizon.net

Schools Committee's Questions for the School Board

1. Equity

A. ATS capacity: Why is ATS the only elementary school not growing to accommodate an increasing number of students and sharing the burden of crowding faced by the rest of the county elementary schools?

B. Elementary Choice School Admissions: As we bring new schools online, redistricting across the county is required, we have the opportunity to address choice school admissions policies to offer equal access through revised policies. What are your plans to ensure equality and diversity are achieved, and reduce confusion about Elementary choice schools admissions?

C. IB and other exemplary programs in the high schools: What are the unique exemplary programs at each of the comprehensive high schools? What are the incremental costs? What are the opportunities for students from each school to take advantage of each program? If they are not equally available, please explain what you will do to address the inequity.

2. Arlington Tech

What has APS done to gather and quantify evidence of interest in the new program?

3. Evaluation and Learning with the 1:1 technology program

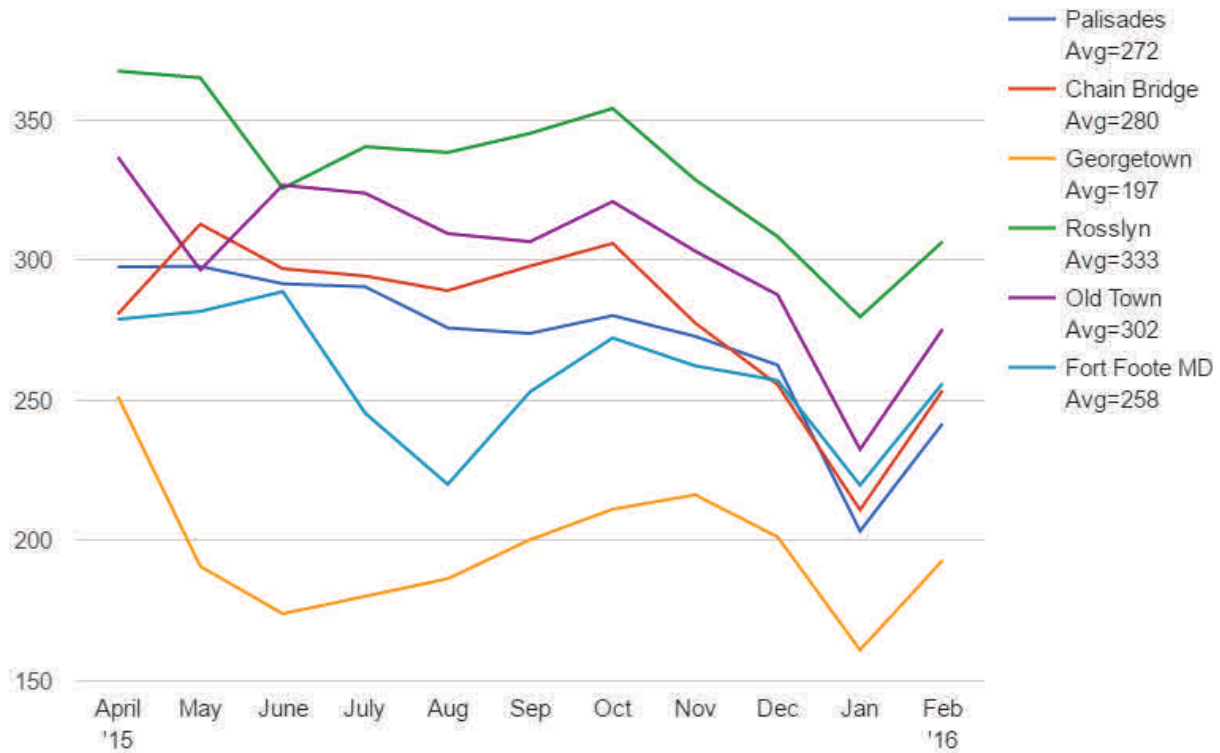
Can you outline how the devices are being used school to school, and by level: elementary, middle and high? How are you evaluating this program overall, and what results can you point to beyond anecdotal evidence? If there are no proven benefits from the program, would you consider rolling back the deployment of devices to grades K-4? Can APS cite evidence that refutes the concerns below?

4. CIP options cost scenarios request for comparison and discussion of tradeoffs

In support of the CIP process in examining options for the projected 2,700 HS seats needed in ten years, we would like APS to provide financial scenarios comparing costs (construction + operations) over the span of 20+ years of:

- Creating and running 3-5 decentralized programs (approximately the size of HB and/or a 600-800 seat Arlington Tech).
- Building additions to current HS's (with or without separate 9th-grade academies associated with each school).
- Building and operating a fourth comprehensive HS on land owned or purchased by the county. (continued on next page)

Chart 1. Number of aircraft noise events per average day above 65 dBA



Raw data: MWAAs Noise Monitor System. Calculations: Sky Posse Arlington.

Slow Progress on Airport Noise

Joe Pelton

The next meeting of the Metropolitan Washington Airports Authority (MWAAs) Noise Committee is March 31. No action seems likely at this meeting with information still be exchanged. The chart above about excessive noise event has been put together from data supplied by MWAAs. It shows Rosslyn as being among the very highest impact area.

Additional flight statistics since 2009 are available at the MWAAs website: http://www.mwaa.com/about/reagan-air-traffic-statistics?_ga=1.210135446.246031587.1459118116

Joe Pelton and Steve Geiger are Arlington County representatives.

Schools Continued

5. Transportation for HS students: Can we get HS students out of yellow busses?

What would be the net cost effect of offering free bus fare for HS students on ART buses (primarily for transit to and from school)?

6. APS staffing

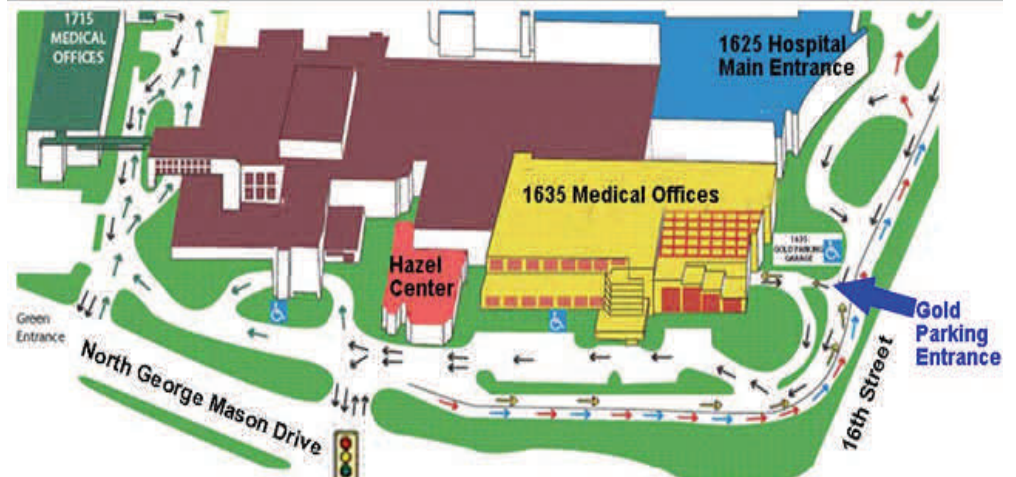
Given that Arlington Schools have grown enormously in the last 8 years, and given the fact that the central office and instructional support positions were cut during the 2008-2009 recession, what new positions are needed to handle a School System that will soon be 30,000 kids?

7. Long-Term Planning

Does APS conduct long-term forecasting (beyond 10 years)? Does APS/SB feel it has an obligation to deliver facilities and maintain viable capacity options for future generations, and if so, what long-term planning and data is needed to inform your decisions and mitigate the risks of under-developing our scarce school land resources in the near-term?

Parking Reminder

Remember to park in the GOLD LOT . On nights of the Civic Federation meeting, the gates of the GOLD Parking lot, which is located under the 1635 Medical Offices, will be open and there is no charge for parking. If you use another lot, you will have to pay the regular rate to exit.



Car Free A to Z: Multimodal Trip-Planning

Mark Freiden

Planning a trip around Arlington and the surrounding area just keeps getting easier! While residents, workers, and visitors have long had a wide range of transit options, they've never had a one-stop, easy-to-use trip-planning tool - until now.

Arlington County Commuter Services developed [Car Free A to Z](#), a web-based trip-planning tool, to make getting around the DC area easy and informative. It's the only trip planner that compares every transportation option in the greater DC region including Capital Bikeshare. Plus, it provides options for trips that combine more than one option, such as biking to the Metro or walking to a bus.

First, users select how they usually travel. Next, they enter a starting and ending point. Users can also skip to the application and select starting and ending points directly on the map. Those who set up a profile at www.carfreeatoz.com/register can also save favorite places such as home and work addresses.

Car Free A to Z then provides several travel options each with turn-by-turn directions, travel times, and cost comparisons. The tool also lets users know how many calories they'll burn and how much they'll reduce their carbon footprint. Car Free A to Z also lets users select the type

and number of transit modes they prefer to use, and the days and times of travel.

Car Free A to Z continues to add features to make trip planning easier and allow users to compare all options, so be sure to keep it bookmarked and use it for all your commute and non-commute trips. Feedback also helps make Car Free A to Z even better, and there are a number of ways users can provide it:

Please complete this [survey](#) about your overall experience using the site. Comment on the usefulness of a specific trip using the "rate" link within that option's summary. In addition, you can send any general feedback to feedback@carfreeatoz.com.

Executive Committee

Jesse Boeding

The Executive Committee met on Sunday, March 6, 2015 to plan the agenda for April 5, 2015 general meeting and discuss future meetings.

The Executive Committee will meet on Sunday, April 10, 2016, at 7:30 p.m. at 4805 Wilson Blvd, Arlington VA 22203 (Fire Station 2) to coordinate and plan future meeting programs.

The deadline for newsletter articles is Thursday, April 21, 2016 due to the meeting date of Tuesday, May 3. Newsletters are published approximately 1 week before the meeting.

Civic Federation Meetings Schedule and Programs for 2015 - 2016

Meeting are the 1st Tuesday of each month (except September and November)

April 5: School Board, Revenues & Expenditures Committee and Resolution Vote, Election of Nominating Committee

Friday, April 8: Civic Federation Award Banquet 100th Anniversary

Thursday, April 14: Arlington County Central Library Symposium 6:30pm—8:30pm “Arlington—Past, Present and 100 Years into the Future”

May 3: Legislative Program

June 7: Election of officers

Arlington County Civic Federation Mission

The ACCF is dedicated to advocacy and community involvement. Its purpose continues to be promoting the general welfare of Arlington County and vicinity in a non-partisan, non-sectarian, non-sectional, and non-political manner.

Committees of the Civic Federation

The committees provide the basis for most actions of the Federation. We strongly encourage every delegate and alternate to serve on at least one committee. If you have an interest in any topic please contact the chair. If a chair is not listed, contact our President Stefanie Pryor at stefanie@civfed.org

Committee	Chair(s)	Email Address
Executive	Jesse Boeding	jesse@civfed.org
Awards	Elected at Dec 2015 Membership Mtg	See listing in newsletter
Audit	Jay Wind	Jay@civfed.org
Bylaws	Sarah Shortall	sarah@civfed.org
Community Relations	Duke Banks	duke.banks@gmail.com
Cultural Affairs	Chair(s) needed	TBD
Emergency	Jackie Snelling	jackie@civfed.org
Environmental Affairs	John Seymour	john@civfed.org
Housing	Chair(s) needed	TBD
Legislation	Chair(s) needed	TBD
Membership	Chair needed	membership@civfed.org
911 Scholarships	Chair(s) needed	TBD
Nominating	Elected at April 2016 Membership Mtg	
Parks and Recreation	Michael Thomas	michaelthomas@civfed.org
Planning and Zoning	Martha Moore	martha@civfed.org
Public Services	Jackie Snelling (POC)	jackie@civfed.org
Revenues and Expenditures	Chair(s) needed,	TBD
Schools	Michael Beer	michaelbeer@civfed.org
Special Events	Joe Pelton	joepelton@civfed.org
Transportation	Jerry Auten	jerry@civfed.org