

PROFILE

2022



ARLINGTON
VIRGINIA

Contents

- 1 Fast Facts
- 2 Land Use & Development
- 3 Population
- 5 Housing
- 7 Households
- 9 Employment
- 11 Development
- 13 Schools & Education
- 15 Multi-Modal Transportation
- 17 Community Services & Resources
- 18 Health & Wellness Services
- 19 Forecast
- 21 Glossary

Arlington County Vision

“Arlington will be a diverse and inclusive world-class urban community with secure, attractive residential and commercial neighborhoods where people unite to form a caring, learning, participating, sustainable community in which each person is important.”

— Arlington County Board

CPHD Mission Statement

Promoting the improvement, conservation and revitalization of Arlington’s physical and social environment.

Message from the Director

The Profile, an annual statistical fact book of Arlington County, has been produced by the Department of Community Planning, Housing, and Development (CPHD) since 1982. This report combines countywide data and provides a comprehensive outlook of the most current data on population, housing, employment, development, transportation, and community services. The Profile data are used to obtain an understanding of our community; for planning future services and needs; to guide policy decisions; to secure grant funding; and to promote equitable solutions for all Arlingtonians.

Due to the COVID-19 pandemic, the U.S. Census Bureau delayed the release of the 2020 Census results. In August 2021, 2020 Census Redistricting Data was released which only included the population totals for race categories, population age 18+, housing units, and group quarters. The detailed population and housing files containing population by age, origin, households, housing, and many cross tabulations of variables are anticipated to be released after summer 2022. Once the complete 2020 datasets are released, CPHD will prepare and release 2020 Census reports and other resources in 2023. The most recent American Community Survey (ACS), 2016-2020 5-Year Estimates, were released in March 2022 and have been incorporated into this Profile update.

Profile 2022 includes statistics from across departments. Once again, we can observe the impacts but also the community’s recovery from the COVID-19 pandemic. The unemployment rate for Arlington residents fell from 4.3% in 2020 to 3.1% in 2021, compared to 6.3% and 4.9% in the entire DC-VA-MD-WV Metropolitan Statistical Area. The number of Metrorail boardings in the Rosslyn-Ballston and Richmond Highway Corridors were six times higher than last year. Additionally, working from home has climbed to the third highest percentage for “modes of transportation” to work for Arlington residents. These statistics and many more can be observed throughout the Profile and compared to previous editions.

In addition to the Profile 2022 report, an interactive Planning Corridors visualization tool is available on the Profile webpage (<https://www.arlingtonva.us/Government/Projects/Data-Research/Profile>) and supports the comparison of demographics across the Rosslyn-Ballston, Richmond Highway, and Columbia Pike Corridors with the rest of the County. All data found in the Profile are available through the Arlington County Open Data Portal.

Thank you to all the staff and departments involved in updating the annual Profile report.

I hope you find the information provided in the 2022 update helpful as we all work together to achieve Arlington County’s vision.



Claude A. Williamson, AICP
Director, CPHD

Location

Arlington is an urban county of about 26 square miles located directly across the Potomac River from Washington DC.

26
Square Miles

People



53% of Arlington's population live in Planning Corridors, which are 4-times more dense than the Non-Corridor Areas (map on page 2).



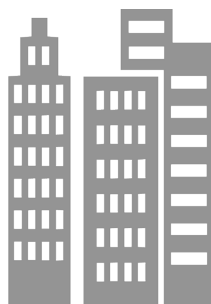
Arlington is one of the most highly educated localities in the Nation, with 76% holding a bachelor's degree or higher, making it #1 among all counties.



An estimated 14% of Arlington's population work at home.

Development

With 42.8 million square feet of rentable building area, Arlington has more private office space than the Central Business Districts of Los Angeles, Denver, Dallas and Seattle, and Downtown Atlanta.



Housing



There are 120,200 housing units in the County, 71% of which are multi-family units.

Households

Since 1980, the majority of Arlington households consist of a single person or nonrelated individuals.



Multi-Modal Transportation



Arlington has 11 Metrorail stations and 16 ART Bus routes that operate throughout the County.



In 2021, metrorail weekday boardings in May were six times higher than the previous year, but still lower than pre-pandemic levels.

Students



The diverse student body of Arlington Public Schools has an on-time graduation rate of 94%.

Employment



In 2021, Arlington's unemployment rate decreased by 1.2% to 3.1%.

Parks

99% of residents live within a 10-minute walk to a park.



Land Use & Development

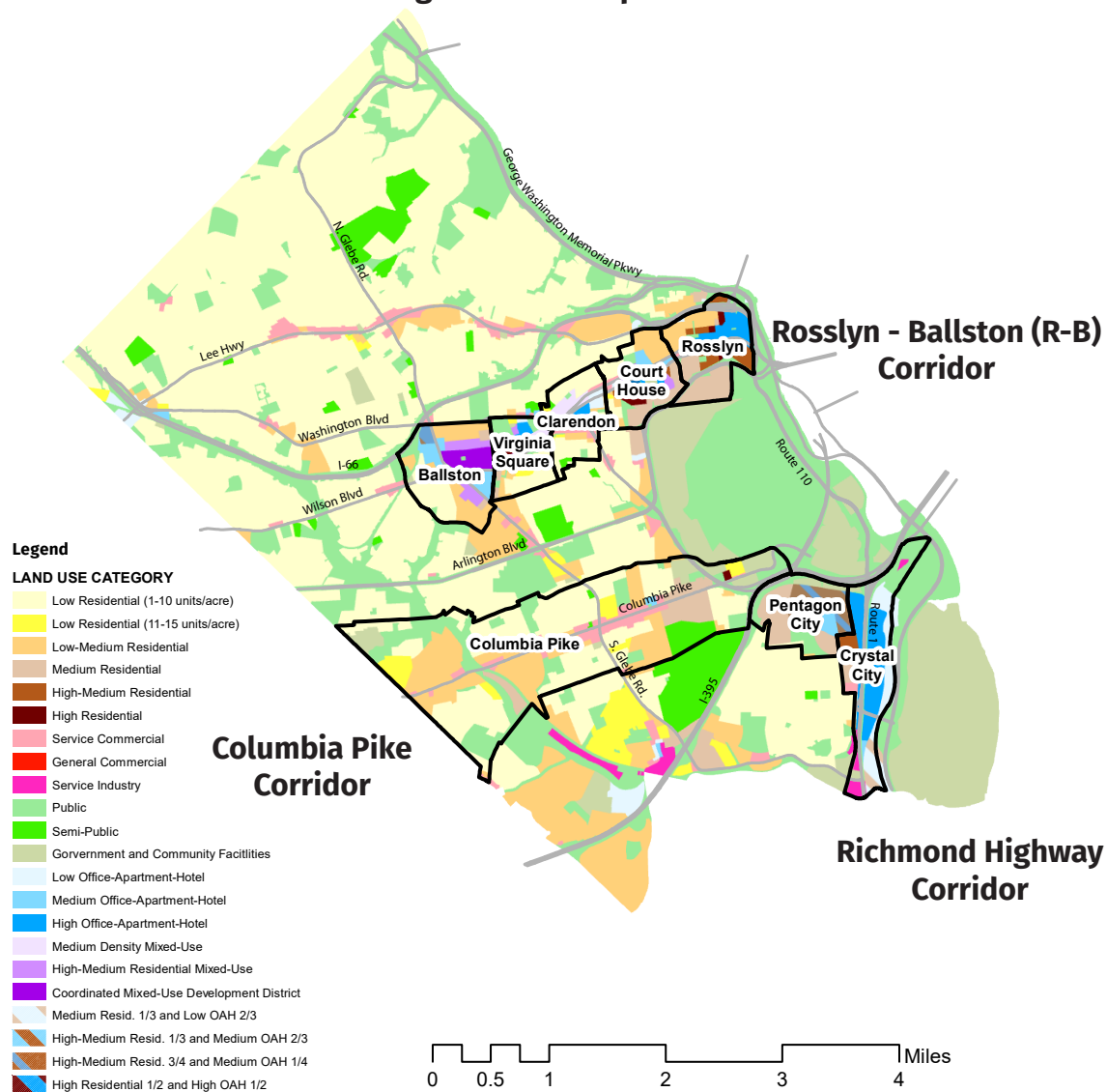
General Land Use Plan

Arlington County's General Land Use Plan (GLUP) is the primary policy guide for future development in the County. The GLUP was first adopted by the County Board in 1961 as one of the first four elements of the County's Comprehensive Plan. Amended over time, the GLUP reflects the County's smart growth principles, concentrating future development along its transit corridors to increase the benefits of its multi-modal transportation options and existing infrastructure. The GLUP also endeavors to balance Arlington's range of land uses with its cultural and natural resources. Through its commitment to careful and thoughtful community planning, along with its adherence to its established policies, Arlington had become recognized as a world-class community.

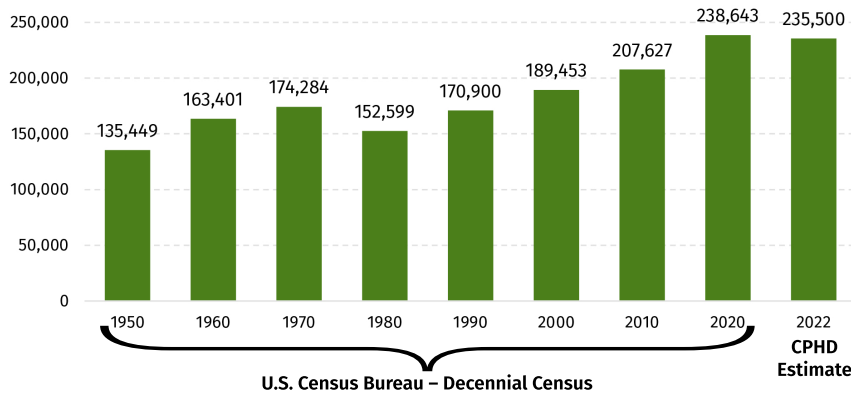
National Planning Achievement Award 2017

-American Planning Association

General Land Use Plan and Planning Corridors Map



Population 1950 - 2022



Arlington's population reached 238,643 people in 2020, followed by a slight decline due to impacts from the COVID-19 pandemic, which occurred in major metro areas across the country.

2022 Population Estimate	235,500
2022 Daytime Population Estimate	315,200
2020 Decennial Census Population	238,643

Land Area	26 square miles (16,640 acres)
Density	9,058 persons/sq. mile 14 persons/acres

Age Distribution	January 2022	
Under 5	13,610	5.8%
5-19	32,530	13.8%
20-24	16,090	6.8%
25-34	55,520	23.6%
35-44	38,950	16.5%
45-54	29,430	12.5%
55-64	23,210	9.9%
65-84	22,930	9.7%
85 and over	3,200	1.4%

Source: Arlington County, CPHD

Median Age (2020 ACS 5-Year)	34.8 years
------------------------------	------------

Source: 2016-2020 American Community Survey 5-Year Estimates

Place of Birth	2020 ACS 5-Year
Native (U.S. Born)	77.4%
Foreign Born	22.6%

Source: 2016-2020 American Community Survey 5-Year Estimates

Civilian Veteran Population	2020 ACS 5-Year
Male	10,533 83.7%
Female	2,058 16.3%
Total Veterans	12,591 100.0%

Source: 2016-2020 American Community Survey 5-Year Estimates

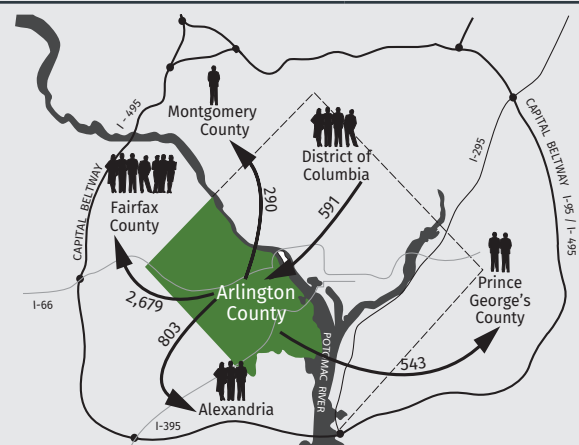
Vital Statistics	2020
Births to Arlington Residents	2,636
Deaths of Arlington Residents	1,150

Source: VA Department of Health

Race and Ethnicity	2020 Census	
Not Hispanic or Latino	201,281	84.3%
White	139,653	58.5%
Black or African American	20,330	8.5%
American Indian or Alaska Native	258	0.1%
Asian	27,235	11.4%
Native Hawaiian or Other Pacific Islander	118	0.05%
Some Other Race	1,491	0.6%
Two or More Races	12,196	5.1%
Hispanic or Latino	37,362	15.7%
Total Population	238,643	100.0%

Source: 2020 Census

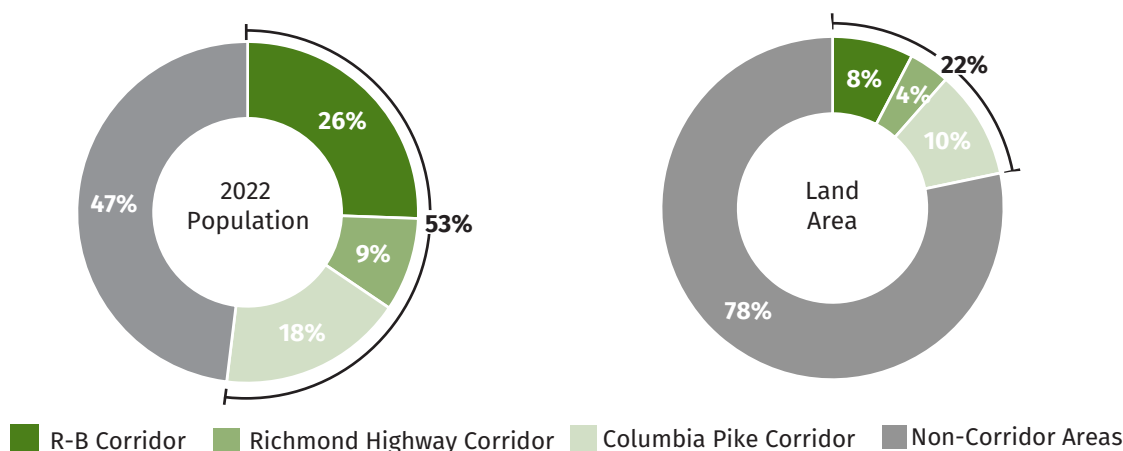
Migration	2019 ACS
Moved In	29,664
Domestic	24,540
From Abroad	5,124
Moved Out (Domestic Only)	28,560



Source: 2015-2019 American Community Survey 5-Year Estimates

53% of Arlington's residents live in Planning Corridors.

2022 Population and Land Area



Source: Arlington County, CPHD

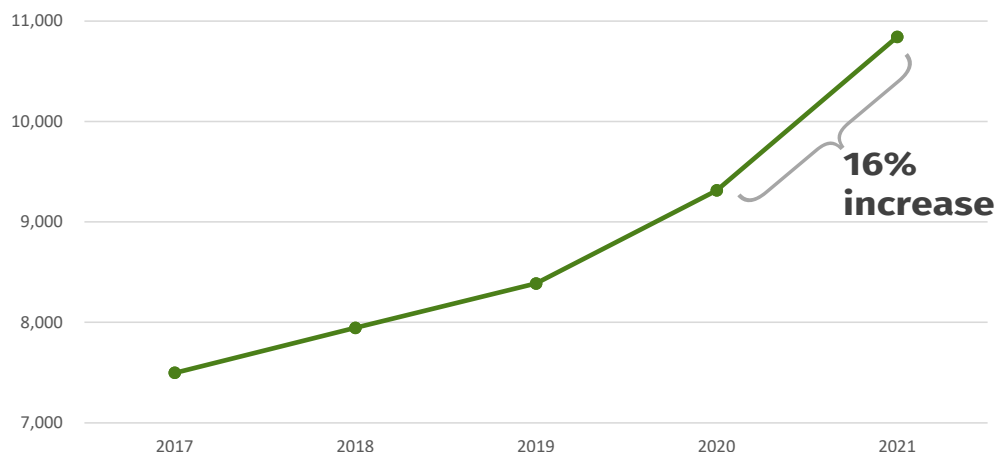
The Planning Corridors combined have a population density of 34 persons per acre, 4 times greater than non-corridor areas of 9 persons per acre.

Density and Age by Corridor

	R-B Corridor	Richmond Highway Corridor	Columbia Pike Corridor
DENSITY	Total Population	61,200	25,100
	Land Area (Acres)	1,277	667
	Percent of Land Area	8%	4%
	Density (Person Per Acre)	48	38
AGE DISTRIBUTION	Under 5 years	3.7%	3.8%
	5 to 19 years	6.3%	3.2%
	20 to 24 years	10.8%	10.3%
	25 to 34 years	37.2%	35.6%
	35 to 44 years	16.6%	18.7%
	45 to 54 years	8.8%	11.9%
	55 to 64 years	7.9%	7.6%
	65 to 84 years	7.6%	7.2%
	85 years and older	0.9%	1.6%

Source: Arlington County, CPHD and 2016-2020 American Community Survey 5-Year Estimates

Committed Affordable Units 2017-2021



Over 1,500 Committed Affordable Units were added to Arlington's housing stock last year, the largest increase in the last 5 years.

2022 Housing Unit Estimate Housing Growth (2020-2022)

120,200
0.9%

2020 Decennial Census Housing Units

119,085

Housing Unit Type	January 2022	
Single Family Detached	27,500	22.9%
Single Family Attached	7,000	5.8%
Multi-Family	85,700	71.3%
Total	120,200	100.0%

Source: Arlington County, CPHD

Note: Housing unit type has been updated to reflect 2020 Decennial Census Data.

Occupied Units (2022)	Owner	Renter
Single Family Detached	86.8%	13.2%
Single Family Attached	70.9%	29.1%
Condo	66.5%	33.5%
Apartments	0.0%	100.0%
Total	38.5%	61.5%

Source: Arlington County, CPHD

Average Assessed Value	2022
Single Family Detached	\$1,070,400
Single Family Attached, Townhouse	\$785,200
Condominium Townhouse	\$893,400
Condos	\$453,000
Cooperatives	\$152,000
Total Average Assessment 2022	\$749,030
Total Average Assessment 2021	\$724,400
Percent change (2021-2022)	3.4%

Source: Arlington County, Department of Management and Finance as of January 1, 2022.

Average Apartment Rent	2021
Efficiency	\$1,618
One-Bedroom	\$1,977
Two-Bedroom	\$2,637
Three-Bedroom	\$3,465
Total Average Rent	\$2,275
Percent change (2020-2021)	5.1%
Apartment Vacancy Rate	7.1%

Source: CoStar February 2022

Rent Subsidy Program Recipients	Housing Choice Voucher	Housing Grant
Low-Income Families	682	380
Persons with Disabilities	225	576
Older Adults	600	424
Total	1,507	1,380

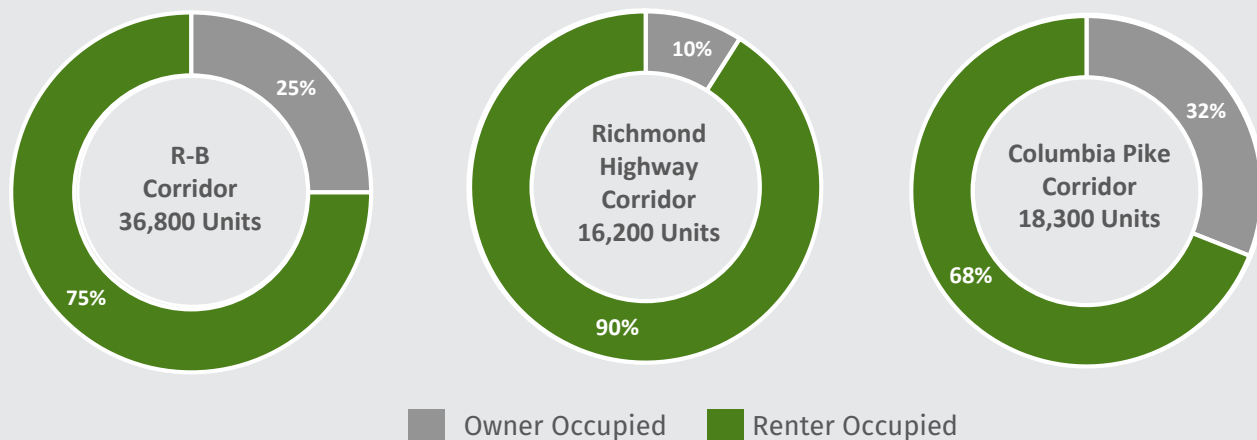
Source: FY 2022 DHS Performance Measures

Committed Affordable Units	2022
Efficiency	853
One-Bedroom	4,892
Two-Bedroom	4,225
Three or More Bedrooms	854
Total	10,824

Source: Arlington County, CPHD, Housing Division

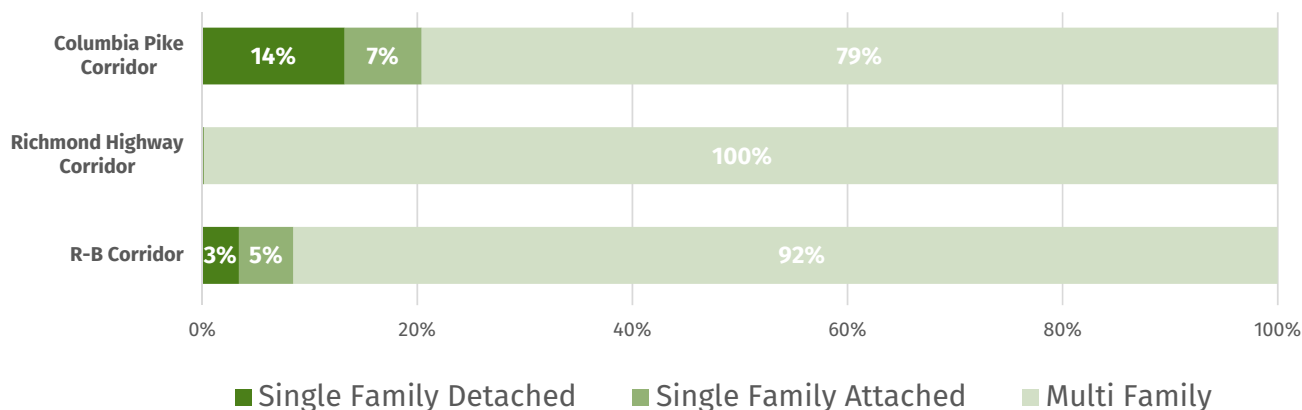
77% of housing units in the planning corridors are renter occupied.

Owner and Renter Occupancy by Corridor



Source: Arlington County, CPHD

Housing Unit Type By Corridor



Source: Arlington County, CPHD

Committed Affordable Units (CAFs) By Bedroom Type by Corridor (2022)

	R-B Corridor	Richmond Highway Corridor	Columbia Pike Corridor
Efficiency	88	262	254
One-Bedroom	1,182	643	1,615
Two-Bedroom	887	218	1,819
Three-Bedroom	253	18	286
Four-Bedroom	3	0	1
Total	2,413	1,141	3,975

Source: Arlington County, CPHD, Housing Division

2022 Households Estimate	112,300
Average Household Size (2020 ACS)	2.14
Average Family Size (2020 ACS)	2.97

2020 Decennial Census Households	109,912
Average Household Size (2020 Census)*	2.14

*Preliminary and subject to change upon the release of the detailed demographic and housing characteristics files to be released by the U.S. Census Bureau in 2022.

Household Size	2020	
1-Person	42,704	39.3%
2-Person	37,370	34.4%
3-Person	12,497	11.5%
4-Person	10,804	9.9%
5+ Persons	5,229	4.8%
Total	108,604	100%

Source: 2016-2020 American Community Survey 5-Year Estimates

Household Type	2020	
Family-Households	49,806	45.9%
Non-Family Households	58,798	54.1%
Total	108,604	100%

Source: 2016-2020 American Community Survey 5-Year Estimates

Household Type with Children under 18-Years	2020	
Households with Children	22,717	20.9%
Family Households	22,599	20.8%
Married Couple	17,878	16.5%
Male Householder, no female	1,371	1.3%
Female Householder, no male	3,350	3.1%
Non-Family Households	118	0.1%
Households without Children	85,887	79.1%
Total	108,604	100.0%

Source: 2016-2020 American Community Survey 5-Year Estimates

Income	2020
Median Household Income (ACS)	\$122,604
Per Capita Income (BEA)	\$100,823

Source: 2016-2020 American Community Survey 5-Year Estimates and Bureau of Economic Analysis

Area Median Income (AMI)	FY 2021
Washington Metro Area (Family of Four)	\$ 129,000

Source: HUD FY 2021 Income Limits

Household Language	2020	
English Only Household	75,578	69.6%
Proficient in English and Another Language	28,133	25.9%
Limited English Proficient Households	4,893	4.5%
Spanish	1,968	1.8%
Asian or Pacific Island	1,558	1.4%
Other Indo-European	894	0.8%
Other Languages	473	0.4%
Total	108,604	100.0%

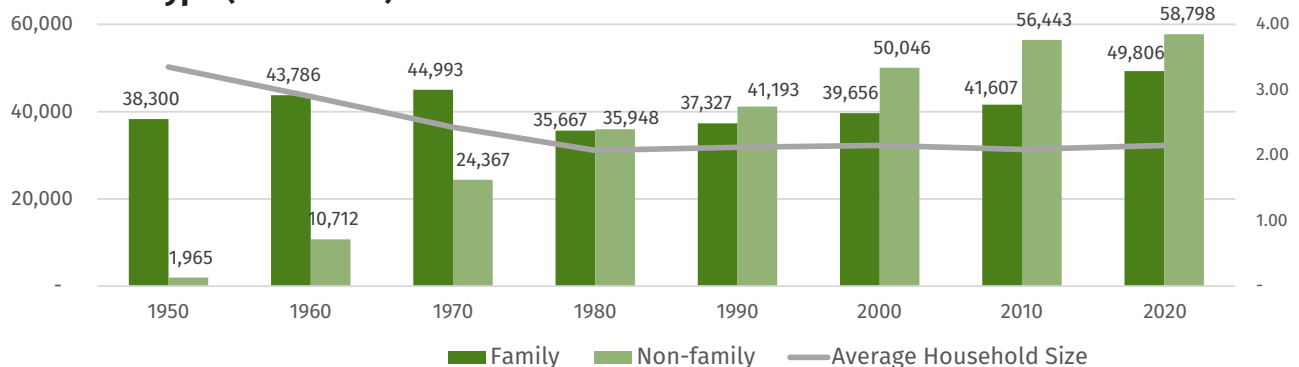
Source: 2016-2020 American Community Survey 5-Year Estimates

Household Poverty Status	2020
Below Poverty Level	6.2%
Above Poverty Level	93.8%

Source: 2016-2020 American Community Survey 5-Year Estimates

Since 1980, the majority of households consist of a single person or nonrelated individuals.

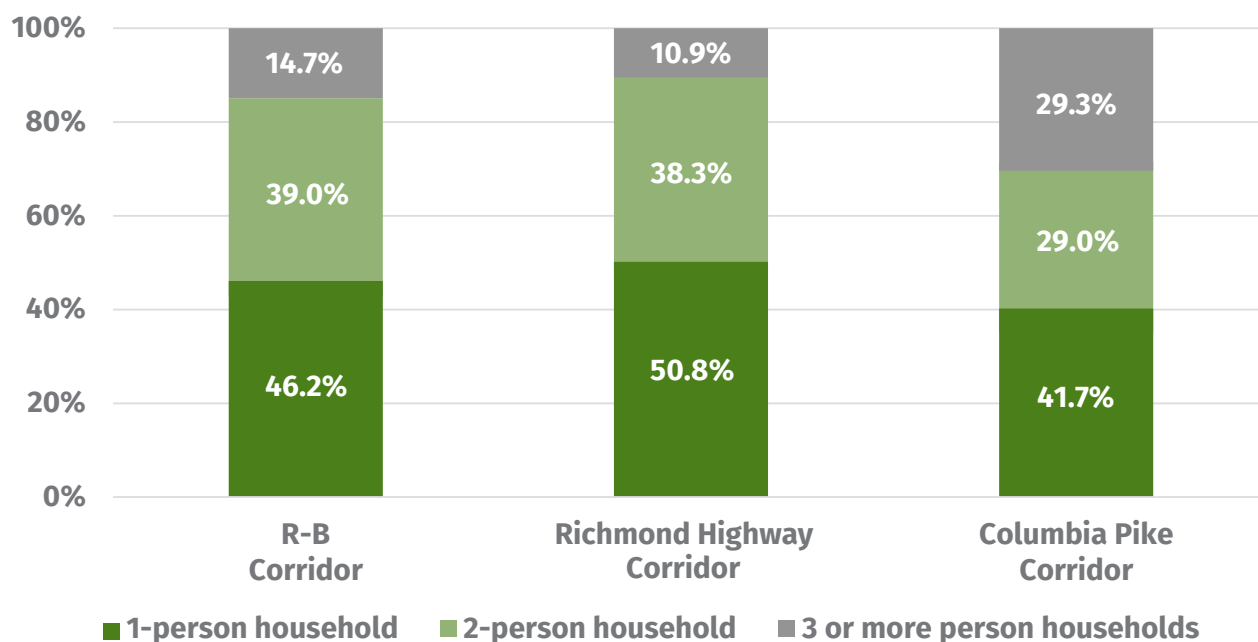
Household Type (1950-2020)



Source: Decennial Census 1950-2010 and 2016-2020 American Community Survey 5-Year Estimates

46% of households in the planning corridors are one person, compared to 31% outside of the Planning Corridors.

Household Size by Planning Corridor



Source: 2016-2020 American Community Survey 5-Year Estimates

Household Characteristics by Planning Corridor

	R-B Corridor	Richmond Highway Corridor	Columbia Pike Corridor
TYPE	Total Households (2022)	34,300	15,000
	Average Household Size	1.77	1.66
	Family Households	31.9%	29.9%
	Non-Family Households	68.1%	70.1%
HOUSEHOLD SIZE	1-Person	46.2%	50.8%
	2-Person	39.0%	38.3%
	3-Person	7.5%	7.8%
	4-Person	4.9%	2.4%
	5+Persons	2.3%	0.7%
HOUSEHOLD INCOME	Less than \$25,000	7.6%	9.9%
	\$25,000 - \$49,999	7.9%	7.1%
	\$50,000 - \$74,999	11.8%	14.5%
	\$75,000 - \$99,999	11.6%	12.2%
	\$100,000 - \$149,999	22.4%	26.1%
	\$150,000 or more	38.8%	30.2%

Source: Arlington County, CPHD and 2016-2020 American Community Survey 5-Year Estimates

2022 Employment Estimate	227,200
Wage and Salary Jobs	222,400
Self-Employed Jobs	4,800

Resident Civilian Labor Force	149,472
Unemployment Rate	3.1%
Residents Living and Working in Arlington	47,610

At-Place Jobs by Industry		2021
Professional and Technical Services	62,800	27.6%
Government	50,300	22.1%
Other Services	49,400	21.7%
Transportation and Warehousing	11,300	5.0%
Hospitality and Food Services	11,100	4.9%
Retail Trade	9,400	4.1%
Real Estate and Rental/Leasing	8,200	3.6%
All Other	8,000	3.5%
Information	6,700	2.9%
Finance Insurance	6,200	2.7%
Construction	3,800	1.7%
Total Jobs	227,200	100.0%

Source: Arlington County, CPHD

Top Private Employers

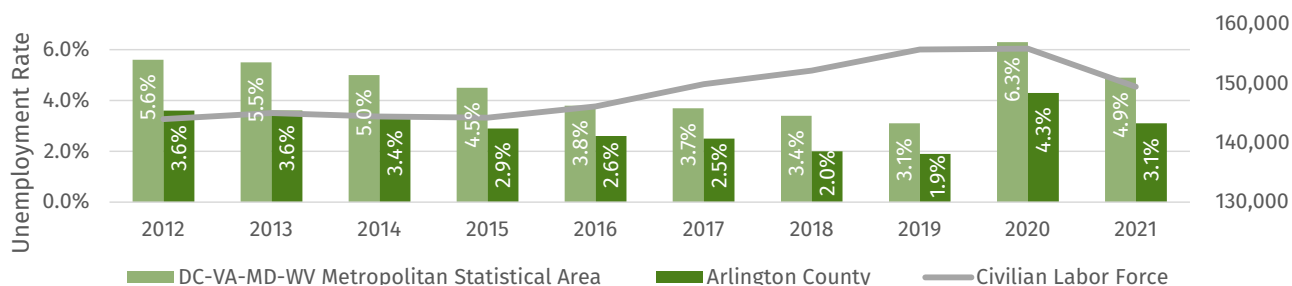
(Listed in Alphabetical Order)

Accenture - Business Services
 Amazon - Electronic Shopping
 Bloomberg BNA - Legal, Tax and Business News
 Booz Allen Hamilton - Business Services
 Deloitte - Business Services
 Gartner - Business Services
 Grant Thornton - Business Services
 Lidl - Grocery Stores
 Nestle - Durable Goods
 Virginia Hospital Center - Medical Services

Source: Arlington Economic Development

Unemployment Rate and Civilian Labor Force 2012-2021 (Arlington Residents)

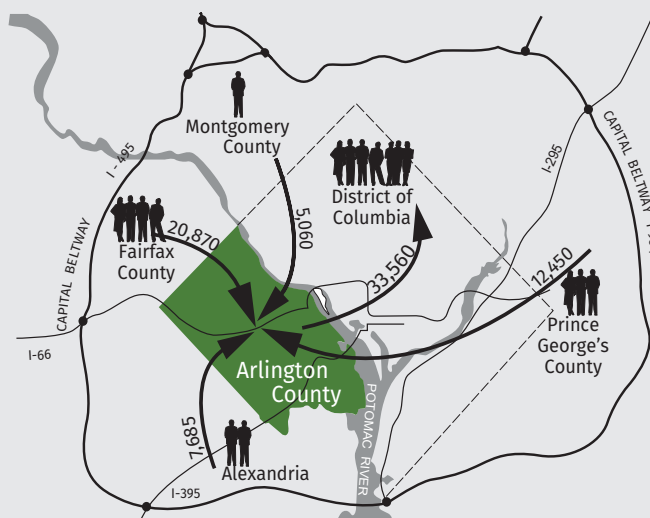
Source: U.S. Bureau of Labor Statistics Local Area Unemployment Statistics (LAUS)



Workforce Flow 2012-2016

	Residents' Work Location	Workers' Home Location
Virginia	83,904	134,166
Arlington County	47,610	47,610
City of Alexandria	5,525	13,210
Fairfax County	25,675	46,545
Prince William County	830	12,545
Loudoun County	965	4,785
Other VA Jurisdictions	3,299	9,471
Maryland	8,590	33,993
Montgomery County	4,985	10,045
Prince George's	2,225	14,675
Other MD Jurisdictions	1,380	9,273
District of Columbia	49,760	16,200
Other States	850	3,036

Net Journey to Work Flow



Source: American Association of State Highway and Transportation Officials, Census Transportation Planning Package 2012-2016 Estimates (Current Data).

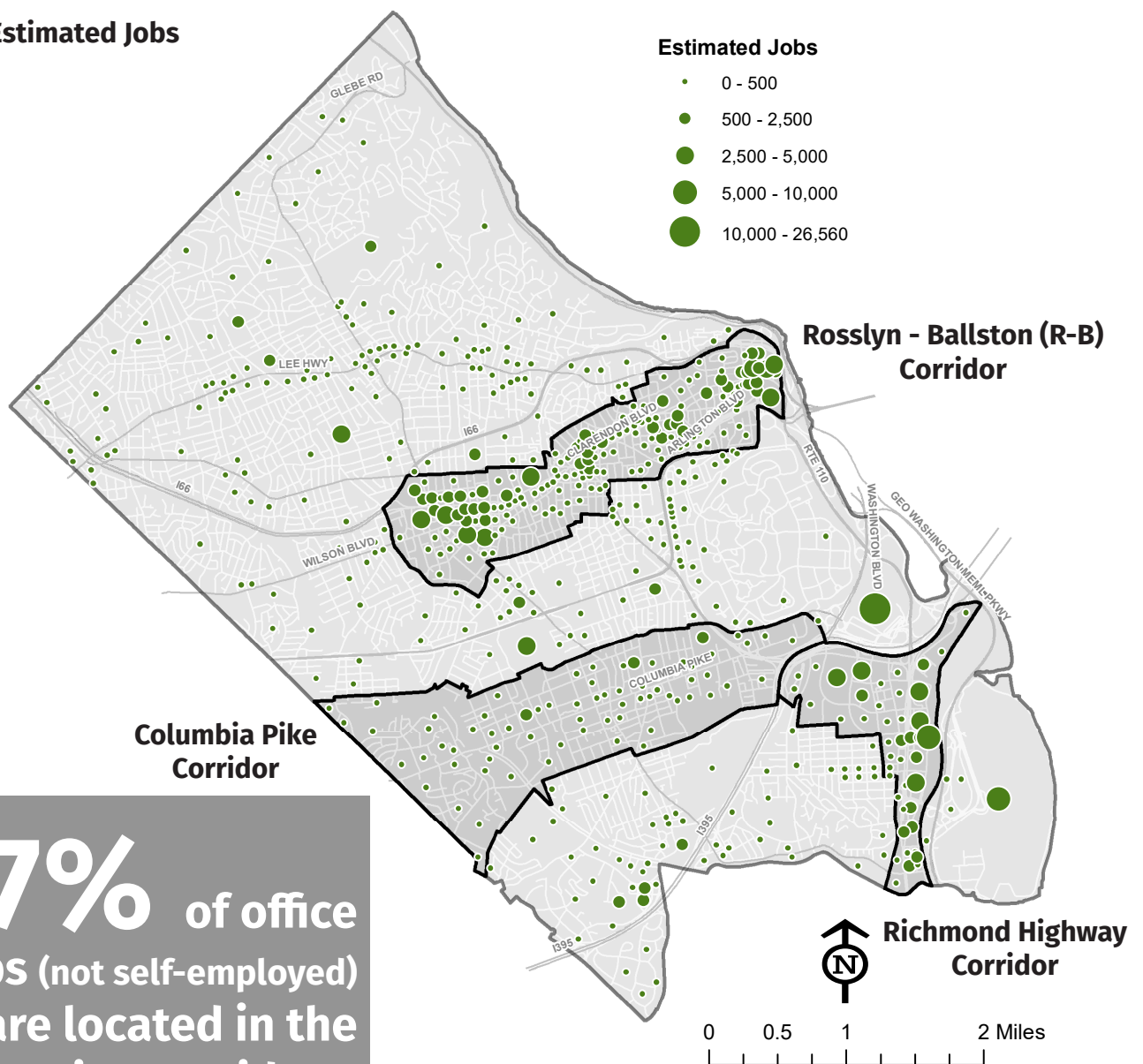
2022 Wage and Salary Jobs by Corridor

	R-B Corridor	Richmond Highway Corridor*	Columbia Pike Corridor
Total Jobs	96,200	47,000	7,700
Office	75.0%	70.9%	34.9%
Retail	12.3%	21.9%	31.9%
Other	9.7%	4.0%	28.2%
Industrial	3.0%	3.3%	4.8%

* Richmond Highway Total Jobs and Job Types do not include jobs located at the Pentagon and National Airport. An estimated 26,560 and 7,750 jobs are located at the Pentagon and National Airport, respectively.

Source: Arlington County, CPHD

2022 Estimated Jobs



77% of office jobs (not self-employed) are located in the planning corridors.

Source: Arlington County, CPHD

2021 Development Activity

	Office GFA	Retail GFA	Other GFA	Residential Units	Hotel Rooms***
Approvals*	8,291	77,436	16,733	2,612	255
Construction Starts**	2,082,566	95,739	239,066	1,163	-
Completions**	-	111,156	399,255	1,735	-
Demolitions**	19,797	84,937	51,070	309	343

GFA = Gross Floor Area

Source: Arlington County, CPHD

*Include projects requiring County Board approval, e.g. site plans and use permit developments (including form based code).

**Include all projects, e.g. site plans, form based code, and by-right.

***Includes temporary conversion of residential unit to hotel room for up to 24 months.

Estimated Total Rentable Building Area (RBA)

42,797,244

Office Vacancy Rate (2021)

19.6%

Source: CoStar, AED

Current Office GFA by Decade Constructed

	R-B Corridor	Richmond Highway Corridor	Columbia Pike Corridor
1920-1929	6,687	-	2,190
1930-1939	6,830	1,818	-
1940-1949	56,602	-	290,308
1950-1959	97,459	-	3,352
1960-1969	3,521,444	1,712,920	137,688
1970-1979	948,451	3,097,547	401,147
1980-1989	8,280,805	5,830,566	-
1990-1999	3,091,239	438,928	21,964
2000-2009	4,971,572	652,611	14,650
2010-2019	2,938,421	721,423	-
2020-Current	382,600	10,000	-
Total GFA	24,302,110	12,465,813	871,299

Source: Arlington County, CPHD

Current Residential Units by Decade Constructed

	R-B Corridor	Richmond Highway Corridor	Columbia Pike Corridor
Pre-1960	12.7%	4.2%	46.1%
1960-1969	4.7%	24.5%	26.9%
1970-1979	2.0%	11.0%	5.6%
1980-1989	17.1%	11.1%	4.7%
1990-1999	16.9%	4.2%	0.7%
2000-2009	24.1%	23.4%	4.9%
2010-2019	15.7%	17.5%	8.9%
2020-Current	6.9%	4.3%	2.4%
Total Units	36,800	16,200	18,300

Source: Arlington County, CPHD

Property Tax Base (2022)

Commercial 46%

Residential 54%

Source: Arlington County, Real Estate Assessments

Note: Apartment buildings are included in the commercial tax base but are taxed at the general rate.

Major Retail Facilities

Gross Leasable Area (SF)

Fashion Centre at Pentagon City 1,037,360

Shops at 1750 Crystal Drive 56,965

Shops at 2100 Crystal Drive 53,174

Ballston Quarter 310,704

Pentagon Centre 337,231

The Crossing Clarendon 392,960

Westpost at National Landing 296,468

Village at Shirlington 141,941

Lee Harrison Shopping Center 116,858

Source: CoStar, Arlington Economic Development

Taxable Sales

Total Taxable Sales (2021) \$2.63 Billion

Source: Virginia Department of Taxation

Hotels and Motels

Number of Hotels/Motels 38

Number of Rooms 9,556

Square Feet of Meeting Space 290,717

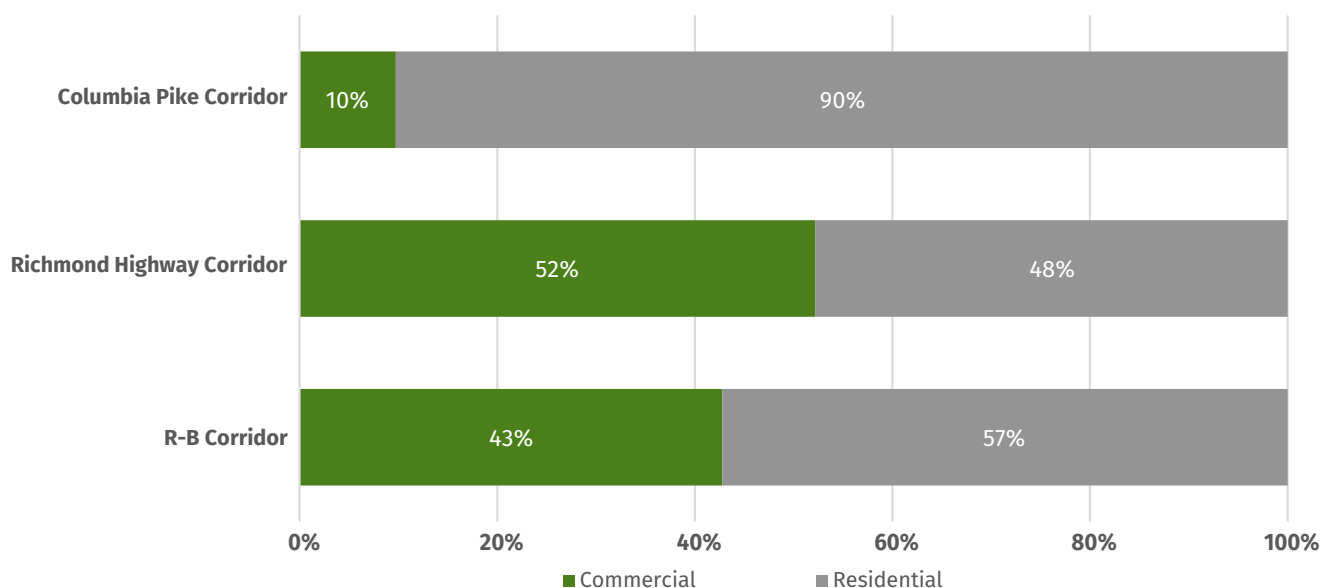
Source: Arlington Convention and Visitors Service

2021 Development Activity by Corridor

		Office GFA	Retail GFA	Residential Units	Hotel Rooms
R-B Corridor	Complete	24,110,810	3,384,101	36,800	3,967
	Under Construction	-	29,866	123	-
	Approved	3,406,291	319,379	5,271	1,108
Richmond Highway Corridor	Complete	12,465,813	3,028,806	16,200	5,648
	Under Construction	2,082,566	95,739	560	-
	Approved	3,441,736	483,896	3,364	500
Columbia Pike Corridor	Complete	871,299	891,882	18,300	645
	Under Construction	-	-	33	-
	Approved	-	35,997	832	-

Source: CPHD, Development Tracking, December 31, 2021

Commercial and Residential Use Mix By Corridor



Estimated Commercial and Residential GFA by Corridor

Use Mix	R-B Corridor	Richmond Highway Corridor	Columbia Pike Corridor
Commercial GFA	30,370,986	19,589,419	2,230,806
Residential GFA	40,636,200	17,959,700	20,710,800

Commercial GFA includes office, retail, and hotel GFA. Hotel GFA is estimated based the ratio of 725 GFA per 1 hotel room. Residential GFA is estimated based on the ratio of 1,100 GFA per 1 residential unit.

Source: CPHD, Development Tracking, January 1, 2021.

Languages Spoken by APS Students
Countries of Origin of APS Students

90
145

FY 2022 Expenditures Per Pupil*
Class of 2021 On-Time Graduation Rate **

\$20,000
94%

Sources: * <https://www.apsva.us/wp-content/uploads/2022/01/FY-2022-WABE-Guide-as-of-January-11-2022.pdf>
** <https://www.apsva.us/post/aps-on-time-graduation-rate-for-class-of-2021-highest-ever/>

APS Enrollment	September 30, 2021
Elementary School (PreK-5)	13,174
Middle School	5,857
High School	7,880
Total Student Enrolled in APS	26,911

Source: Arlington Public Schools, September 30, 2021, https://www.apsva.us/wp-content/uploads/2021/11/U-MEM_281_Membership-Summary-All.pdf

Students Per Classroom Teacher	FY 2022
Elementary School (PreK-5)	22.9
Middle School	21.8
High School	20.4

Source: FY 2022 The Washington Area Boards of Education Guide

School Type for Population 3+ Years Enrolled in School	Public	Private
Nursery school or preschool	32.1%	67.9%
Kindergarten	87.6%	12.4%
Grade 1 to grade 4	89.9%	10.1%
Grade 5 to grade 8	87.4%	12.6%
Grade 9 to grade 12	87.3%	12.7%
College undergraduate years	62.7%	37.3%
Graduate or professional school	39.8%	60.2%

Source: 2016-2020 American Community Survey 5-Year Estimates

Educational Attainment	2020 ACS	
Less than High School Graduate	8,825	5.1%
High School Graduate	13,788	7.9%
Some College	13,984	8.0%
Associates Degree	5,589	3.2%
Bachelor's Degree	61,669	35.3%
Graduate or Professional Degree	70,725	40.5%
Total Age 25 Years and Older	174,580	100.0%

Source: 2016-2020 American Community Survey 5-Year Estimates

76%

Nationwide, Arlington tops the list of counties with the highest percentage of residents with a bachelor's degree or higher.

APS County-Wide Student Generation Factor by Housing Type	Fall 2021
Single Family Detached	0.452
Townhouse	0.206
Duplex	0.326
Apartments Elevator - Market Rate	0.062
Apartments Elevator - Mixed Income	0.110
Apartments Elevator - Committed Affordable	0.532
Apartments Garden - Market Rate	0.242
Apartments Garden - Mixed Income	0.331
Apartments Garden - Committed Affordable	0.622
Condo Elevator	0.050
Condo Garden	0.113
Total	0.216

Source: Fall 2021, 10-Year Enrollment Projections Report, Attachment C, <https://www.apsva.us/statistics/enrollment-projections/>

Child Care	FY 2021
Child Care Slots	7,802
Center Based Slots	5,294
Religious-Affiliated Program Slots	808
Public Schools Slots	885
Family Based Slots	815

Source: Arlington County, Department of Human Services

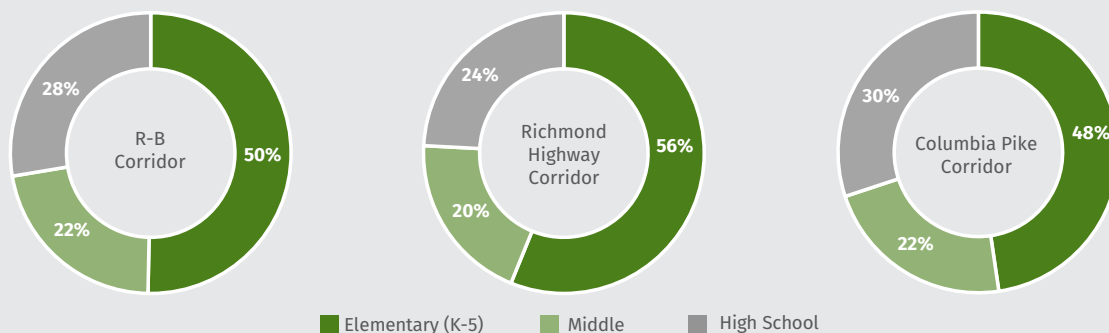
Graduate Programs, Colleges, and Universities in Arlington (2021)

DeVry University (188) | George Mason University (1,714) | George Washington University (289) | Marymount University (3,294) | Strayer University | University of Management and Technology (295) | University of Virginia | Virginia Tech

Enrollment numbers provided when available from school/university or National Center for Education Statistics (2021).

37% of APS students live in the Planning Corridors.

APS Student Grade Level Distribution in Planning Corridors



	R-B Corridor	Richmond Highway Corridor	Columbia Pike Corridor
APS TOTALS			
Total APS Students	2,910	675	6,270
Elementary (K-5)	1,464	379	2,989
Middle	642	133	1,395
High School	804	163	1,886

Source: 1. Students data from APS September 30, 2021 count.
2. Corridor boundaries from Arlington County ARLGIS.PlanningCorridor_polys 2020 shapefile

Note: Some students were not geocoded for reasons such as (i) they are children of employees who live outside Arlington County, (ii) they reside on Joint Base Myer-Henderson Hall (federal jurisdiction), or (iii) they are experiencing homelessness, are in foster care outside of Arlington County, or live in a shelter.

Over half of residents in the Columbia Pike Corridor Age 25 and Over have a Bachelor's Degree or Higher.

Educational Attainment of Corridor Residents (Age 25 Years and Over)

	R-B Corridor	Richmond Highway Corridor	Columbia Pike Corridor
EDUCATIONAL ATTAINMENT			
Population Age 25+	43,770	17,446	30,043
Less than High School Graduate	3.3%	1.1%	10.5%
HS Diploma or GED	4.7%	5.2%	15.1%
Some College	5.4%	5.3%	12.8%
Associates Degree	2.3%	4.3%	5.2%
Bachelor's Degree	40.4%	39.3%	31.3%
Graduate or Professional Degree	43.9%	44.8%	25.0%

Source: 2016-2020 American Community Survey 5-Year Estimates

Bikeshare, e-bike and scooter users rode over 875,000 miles in Arlington.

That's equivalent to riding over 35 times around Earth.

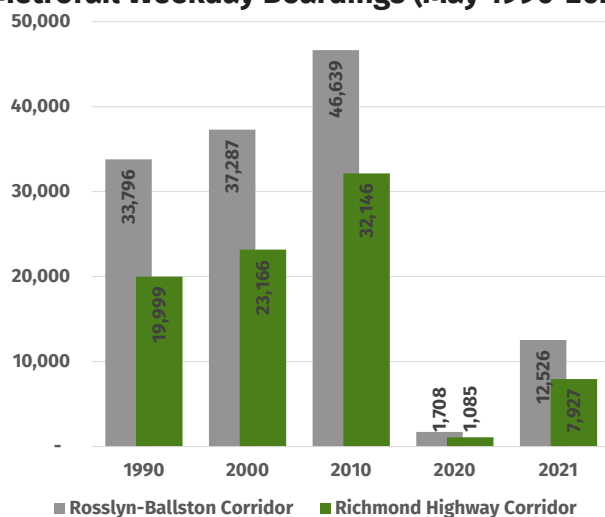


Metrorail

2021 Average Weekday Activity	Entry	Exits
Rosslyn-Ballston	7,738	7,642
Rosslyn	2,532	2,420
Courthouse	1,273	1,284
Clarendon	1,049	1,122
Virginia Square	772	738
Ballston	2,113	2,077
Richmond Highway Corridor	4,892	4,883
Pentagon City	2,887	2,896
Crystal City	2,005	1,987
Non-Corridor Stations	6,112	5,643
East Falls Church	731	739
Arlington Cemetery	299	292
Pentagon	3,009	2,810
Reagan National Airport	2,073	1,803

Source: Washington Metropolitan Area Transit Authority

Metrorail Weekday Boardings (May 1990-2021)



Source: Washington Metropolitan Area Transit Authority

*Post 2010 ridership impacted by WMATA's SafeTrack program, implemented to improve safety and reliability system wide.

ART- Arlington Transit (FY 2021)

Passenger Trips	1,391,820
Total Passenger Miles	2,922,822
Bus Routes	16

Source: DES - Transit Bureau

Capital Bikeshare (2021)

Total Mileage	471,713
Total Trips	190,194
Arlington Stations	104

Source: Capital Bikeshare

Scooters (2021)

Total Ride Miles	381,411
Total Trips	384,607

Source: DES - Commuter Services

Other Shared E-Bikes (2021)

Total Ride Miles	22,165
Total Trips	17,442

Source: DES - Commuter Services

Bicycle & Pedestrian Counts (2021)

Bicycle and Pedestrian

Custis Trail - West of Rosslyn	471,153
Key Bridge - Rosslyn to DC	1,163,028
Mt. Vernon Trail - Near Airport	593,209
W&OD Trail - Bon Air Park	646,102

Bicycle Only:

Clarendon Boulevard	30,943
Wilson Boulevard	55,898

Source: DES - Transportation Planning/BikeArlington

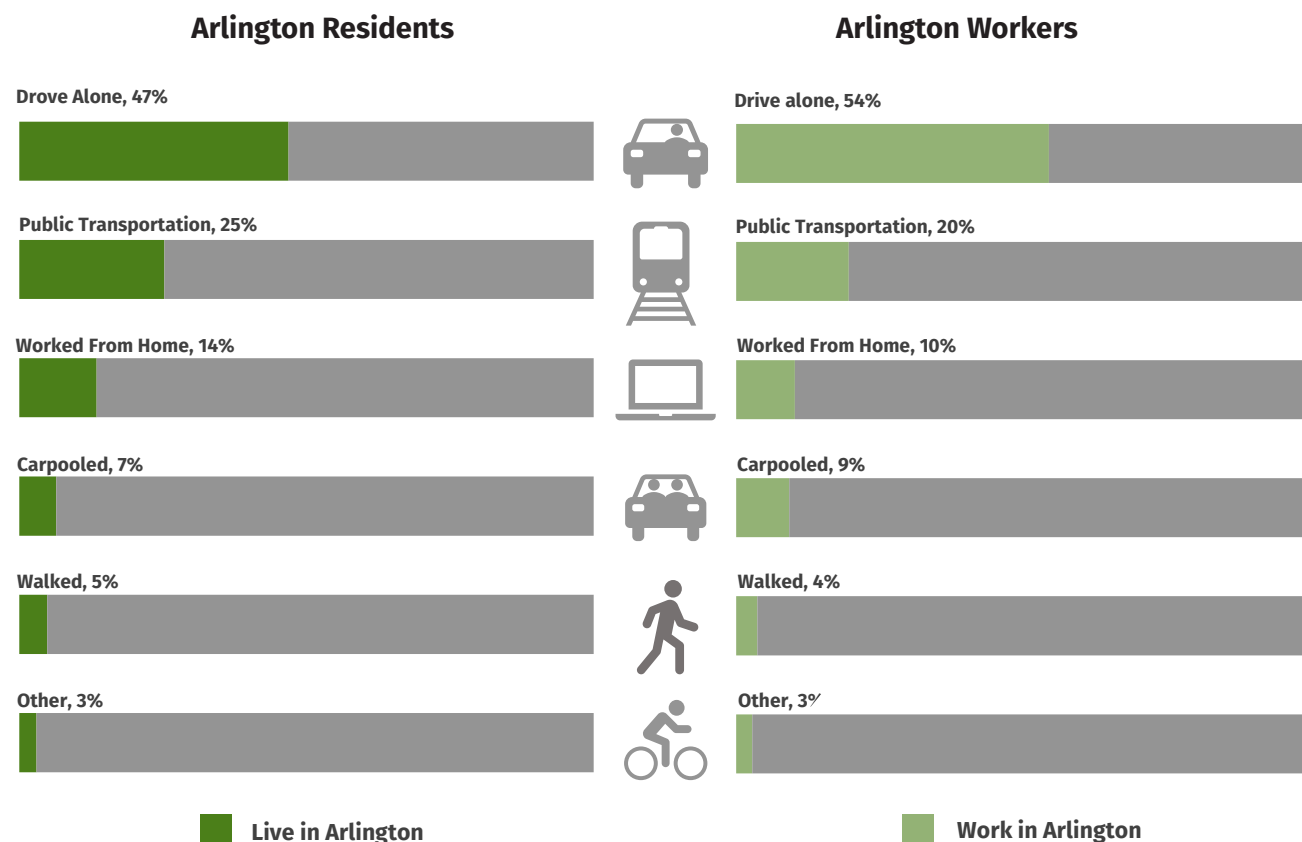
Air Travel Passengers (2021)

Ronald Reagan Washington National Airport	14,044,724
Washington Dulles International Airport	15,006,955
Baltimore/Washington International Thurgood Marshall Airport	18,868,429

Source: Metropolitan Washington Airports Authority and Baltimore-Washington International Airport

Multi-Modal Transportation

Mode of Transportation to Work



Source: 2016-2020 American Community Survey 5-Year Estimates

Nearly half of households in Arlington only have one vehicle available.

Number of Vehicles Available Per Household

	Number of Households	Percent
No Vehicles Available	15,048	13.9%
1 Vehicle Available	51,531	47.4%
2 Vehicles Available	32,264	29.7%
3 or More Vehicles Available	9,761	9.0%
Total Households	108,604	100.0%

Source: 2016-2020 American Community Survey 5-Year Estimates

County Owned Parkland* NOVA Parks

924 acres (148 parks)
136 acres (3 parks)

Facilities	No.
Libraries	8
Fire Stations	9
Community Centers	13
55+ Centers	5
Multi-Use Trails (Off-Street)*	52 miles
Bicycle Facilities**	102 miles

Source: Arlington County: Department of Parks and Recreation, Libraries, Fire Department, Department of Environmental Services.

Park and Recreational Facilities	No.
County Owned Parks	148
Playgrounds*	127
Spraygrounds	7
Amphitheaters*	6
Indoor or Outdoor Public Pools*	4
Nature Centers*	3
Reservable Picnic Shelters	16

Source: Arlington County, Department of Parks and Recreation

Other Park Amenities	No.
Community Gardens*	7
Off Leash Dog Parks	9
Outdoor Tracks*	3
Skateboard Park	1

Source: Arlington County, Department of Parks and Recreation

Other Community Resources	No.
Theaters	4
Places of Worship	81
Restaurants	613
Hospitals	1
Farmers Markets	10

Source: Arlington County, CPHD and AED

Local Historic Districts	2022
Total Districts	41
Oldest Building	Ball-Sellers House (1760)
Newest Building	Stratford School (1950)

Source: Arlington County, CPHD, Historic Preservation

*Located on County Owned Parkland, NOVA Parks, Arlington Public Schools, Federal Land, and/or privately owned land with an access easement.
** Refers to bicycle lanes (standard and buffered), protected Bicycle lanes, bicycle boulevards, and recommended on-street routes.

National Park Service

417 acres

(GW Parkway, Arlington House, and Iwo Jima Memorial)

Athletic and Small Games Courts	No.
Basketball Courts*	93
Full Courts	79
Half Courts	14
Tennis Courts*	92
Full Courts	87
Half Courts	5
Volleyball*	15
Bocce*	3
Handball	2
Petanque	5
Futsal Courts	1
Pickleball Courts	18

Source: Arlington County, Department of Parks and Recreation

Athletic Fields	No.
Diamond*	35
Rectangle*	42
Combination* (Diamond and Rectangle)	19

Source: Arlington County, Department of Parks and Recreation

Libraries	FY 2021
# of Arlington Households Reached	47,000
Number of events	1,181
Program attendees (youth and adult)	22,700
Summer Reading Challenge Participants	4,525
Number of active cardholders	61,000
Number of physical library items circulated	1,200,000
Number of digital library items circulated	900,000
Number of app sessions	504,000
Number of wifi logins (indoor/outdoor)	866,000

Source: Arlington County, Department of Libraries

Federal Parkland and Memorials (FY 2021)

Arlington House
Arlington National Cemetery
George Washington Memorial Parkway
Gravelly Point
Roaches Run Waterfowl Sanctuary
National 9/11 Pentagon Memorial
Air Force Memorial
US Marine Corps War Memorial (Iwo Jima)

#4 Best City to Work From Home

SmartAsset, January 2021

Department of Human Services (DHS)

DHS Customer Service Center	FY 2021
Walk-in Visits (Main Center)	N/A
Calls Received (Main Call Center)	72,042
Calls to Behavioral Health Emergency Line	38,106
Calls to Child Protective Services Hotline	2,105
Visits to Public Health Clinics	7,133
Visits to Behavioral Health Center	1,217

Human Services Programs Most Frequently Accessed	FY 2021 # Assisted
School Health Clinics	2,398
Medicaid	25,345
Behavioral Healthcare	6,234
Supplemental Nutrition Assistance	7,129
Immunization Clinic*	1,071
Housing Assistance	3,327
Family Planning	1,555

*Does not include COVID immunizations

Other	FY 2021
Food establishment inspections	1,269
Homeless individuals	171
Children in foster care	64
Nonprofits partnering with DHS	46
Arlington Police Patrol Officers trained in mental health crisis intervention (CIT)	76%

Human Services Divisions and Programs (DHS)

The Department of Human Services administers programs in public health, behavioral health, and social services, including:

Aging and Disability Services

Aging and Disability Resource Center | Senior Nutrition | Adult Protective Services | Medicare Counseling | Senior Behavioral Healthcare | Adult Day Program | Developmental Disabilities Services | Nursing Visits | Area Agency on Aging

Behavioral Healthcare

Crisis Intervention | Residential Care | Day Program | Mental Health and Substance Use Outpatient Treatment | Jail-Based Services | Homeless Outreach | Health and Wellness

Child and Family Services

Children's Behavioral Healthcare | Parent Support | Child Protective Services | Foster Care | Adoption | Child Care Licensing

Economic Independence

Crisis Assistance | Employment Center | Medicaid | SNAP | Homeless Services | Housing Assistance | Community Outreach

Public Health

Immunization Clinic | Maternity Clinic | WIC | Family Planning | Sexually Transmitted Infection Clinic | Environmental Health | Disease Investigation | Dental Clinic | School Health | Tuberculosis Control | COVID Response

Source: Arlington County, Department of Human Services
A comprehensive list of programs can be found at <https://www.arlingtonva.us/Government/Departments/DHS/DHS-Program-Directory>

Parks and Recreation

Program Enrollment	FY 2021
Enjoy Arlington Recreation and Fitness Classes	4,851
Youth	3,838
Adult	1,013
Summer Camp 2021	11,623
Teen Nutrition, Fitness & After-school Programs	475
55+ Adult Classes and Fitness Programs	15,814

DPR & Affiliated Leagues Registration	FY 2021
Youth	23,121
Adult	4,246

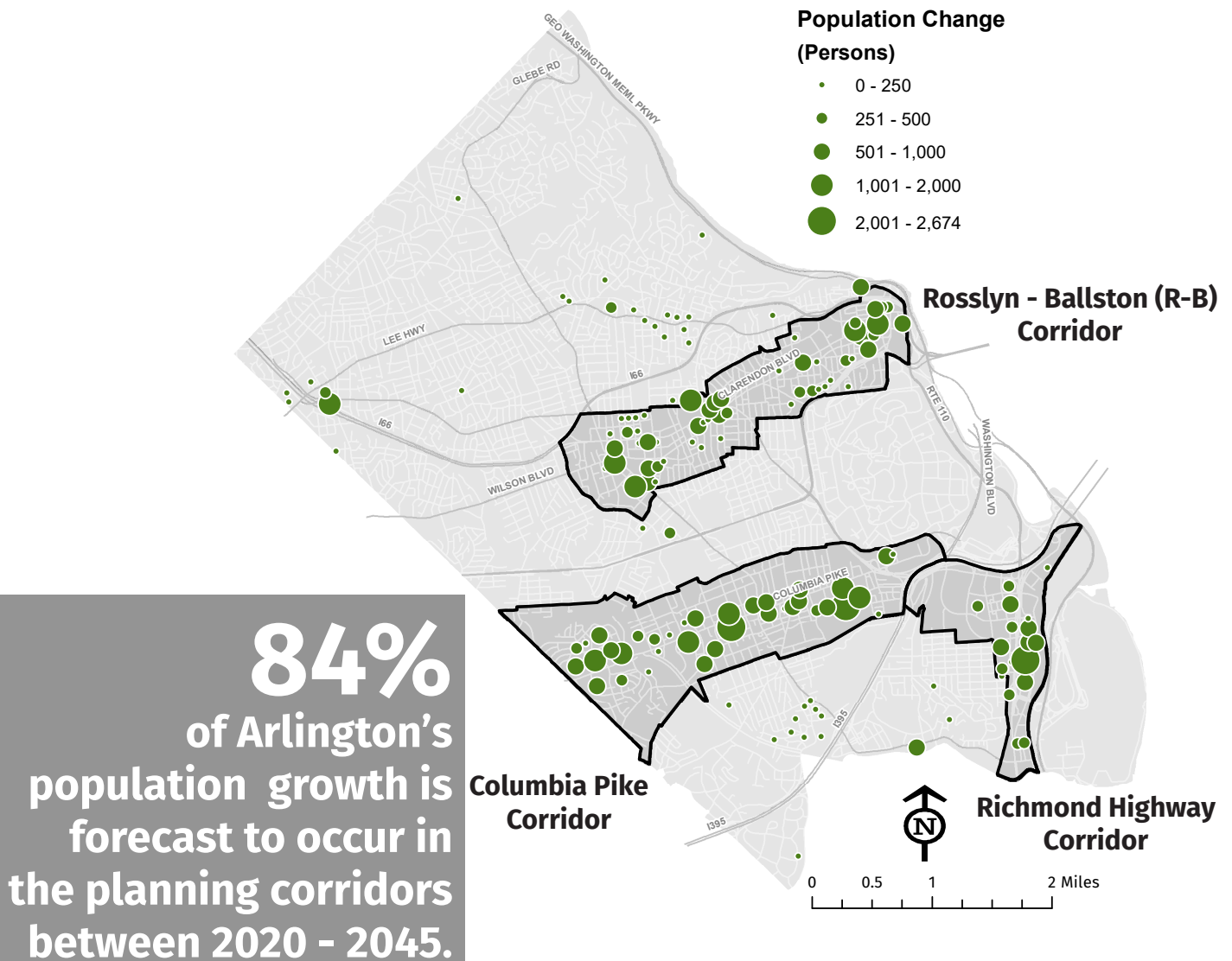
Source: Arlington County, Department of Parks and Recreation

Arlington County Forecast Round 9.2

	Housing Units	Households	Population	Jobs
2010 Census	105,404	98,050	207,627	222,300*
2015	110,600	103,200	219,100	209,100
2020	117,300	109,200	231,200	229,400
2025	126,800	117,900	249,200	240,100
2030	133,300	123,800	261,600	258,100
2035	139,700	129,700	273,900	280,100
2040	146,300	135,800	287,200	287,500
2045	152,500	141,400	299,500	290,800

*CPHD Estimate

Forecast Population Growth 2020-2045



About the Forecast

Arlington County participates in the Metropolitan Washington Council of Governments (MWCOG) Cooperative Forecasting program – a joint effort with Federal and local governments of the region to produce a consistent set of long-range economic and demographic forecasts. These forecasts are the basis of functional plans in the areas of transportation, water resources, air quality, housing, land use, and energy. Updates to Arlington County's forecast are generally produced on an annual or 2-year basis. Forecasts are produced for a 30-year period, broken down in to 5-year increments. Each major forecasting process led by MWCOG is call a Round. In August 2020, Arlington County submitted updated forecast numbers for Round 9.2. MWCOG approved Round 9.2 as land use inputs for Transportation Planning Board's Air Quality Conformity Analysis in February 2021.

Arlington County Forecast Round 9.2 by Corridor

	R-B Corridor	Richmond Highway Corridor	Columbia Pike Corridor	Other Areas
HOUSING UNITS	2010 Census	28,700	13,100	16,400
	2015	31,500	12,900	17,100
	2020	34,600	15,200	18,200
	2025	39,300	17,500	19,100
	2030	42,000	19,400	20,100
	2035	43,900	21,100	21,900
	2040	45,500	22,600	25,100
	2045	46,300	24,600	28,100
	2010-2045 % Change	61.3%	87.8%	71.3%
HOUSEHOLDS	2010 Census	26,700	11,000	15,300
	2015	29,300	11,100	16,000
	2020	32,200	13,000	17,000
	2025	36,500	14,800	17,900
	2030	39,000	16,200	18,800
	2035	40,800	17,500	20,500
	2040	42,300	18,600	23,600
	2045	43,000	20,200	26,500
	2010-2045 % Change	61.0%	83.6%	73.2%
POPULATION	2010 Census	47,000	17,400	36,000
	2015	52,500	17,500	37,700
	2020	58,500	20,400	40,500
	2025	67,500	23,100	42,900
	2030	72,600	25,400	45,400
	2035	76,100	27,300	50,000
	2040	78,700	29,000	58,100
	2045	80,000	31,400	65,800
	2010-2045 % Change	70.2%	80.5%	82.8%
JOBS	2010	94,100	54,800	8,300
	2015	90,800	49,000	7,300
	2020	96,700	53,500	7,700
	2025	99,000	60,300	7,600
	2030	100,000	77,000	7,600
	2035	103,200	94,100	8,800
	2040	109,900	94,800	8,900
	2045	114,900	94,500	8,400
	2010-2045 % Change	22.1%	72.4%	1.2%

Source: CPHD (Prepared Fall 2020)

Average Family Size: A measure obtained by dividing the number of members of families by the total number of families or family householders. (U.S. Census Bureau)

Average Household Size: A measure obtained by dividing the number of people in households by the total number of households or householders. (U.S. Census Bureau)

Committed Affordable Units (CAFs): These units are guaranteed by agreement with the federal, state, or County Government, or through mechanisms such as tax-exempt financing, to remain affordable to low and moderate income households for a specified period of time; generally 30 to 60 years. Rents in most cases are affordable to households earning 60% or less of the Area Median Income, although some CAFs have rents affordable to households earning up to 80% of median.

Civilian Labor Force: All civilian population 16 years old and over who are employed: (1) “at work” -- those who did any work at all during the reference week as paid employees, worked in their own business or profession, worked on their own farm, or worked 15 hours or more as unpaid workers on a family farm or in a family business; or (2) were “with a job but not at work” -- those who did not work during the reference week but had jobs or businesses from which they were temporarily absent due to illness, bad weather, industrial dispute, vacation, or other personal reasons. (U.S. Census Bureau)

Educational Attainment: Refers to the highest level of education completed in terms of the highest degree or the highest level of schooling completed. (U.S. Census Bureau)

Employment Industry: A group of establishments that produce similar products or provide similar services. (U.S. Bureau of Labor Statistics)

Family: A householder and one or more people living in the same household who are related to the householder by birth, marriage, or adoption. All people in a household who are related to the householder are regarded as members of his or her family. (U.S. Census Bureau)

Fiscal Year: A one year period beginning July 1 through June 30.

Gross Floor Area: The sum of the area (square feet) within a building. (CPHD)

Households: A household includes all the people who occupy a housing unit as their usual place of residence. (U.S. Census Bureau)

Householder: The person, or one of the people, in whose name the home is owned, being bought, or rented. (U.S. Census Bureau)

Migration: Migration includes all changes of residence including moving into, out of, or within a given area. (U.S. Census Bureau)

Population: All people, male and female, child and adult, living in a given geographic area. (U.S. Census Bureau)

Rentable Building Area (RBA): Expressed in square feet, this area includes the usable area and its associated share of the common areas (CoStar)

Self-Employed Jobs: Those persons who work for profit or fees in their own business, profession, trade, or farm. Only the unincorporated self-employed are included in the self-employed category. (U.S. Bureau of Labor Statistics)

Student Generation Factor (SGF): The ratio between the number of enrolled APS students to housing units. (Arlington Public Schools)

Unemployment Rate: Represents the number of unemployed people as a percentage of the civilian labor force. (U.S. Bureau of Labor Statistics)

Vacancy Rate: Identifies the amount of New/Relet/Sublet space vacant divided by the existing RBA (CoStar)

Wage and Salary Jobs: Workers who receive wages, salaries, commissions, tips, payment in kind, or piece rates. The group includes employees in both the private and public sectors. (U.S. Bureau of Labor Statistics)

Profile 2021 Resources

U.S. Census Bureau (general information)

(301) 763-4636

www.census.gov

The U.S. Census Bureau collects and reports demographic and economic data for the nation, states, counties and cities

Arlington County Demographic Data

<https://projects.arlingtonva.us/data-research/>

Arlington Public Schools (703) 228-6000

www.apsva.us

Information on enrollment, schools and programs, data, and PreK – 12 educational services for Arlington County families.

Weldon Cooper Center for Public Service (434) 982-5522

www.coopercenter.org

Data and research on the Commonwealth of Virginia and Virginia counties and cities.

Virginia Employment Commission (804) 786-1485

<http://www.vec.virginia.gov/>

Labor market and employment data for the Commonwealth of Virginia and Virginia counties and cities.

Northern Virginia Regional Commission (703) 642-0700

www.novaregion.org

Information on demographics, transportation, environmental services and human services for Northern Virginia.

Metropolitan Washington Council of Governments (202) 962-3200

www.mwcog.org

Population, housing, transportation, and health and human services information for the Washington DC region.

Arlington County Government Frequently Called Numbers

County Manager's Office (703) 228-3120

County Board Office (703) 228-3130

Department of Community Planning, Housing and Development

Planning Division (703) 228-3525

Zoning Division (703) 228-3883

Inspection Services Division (703) 228-3800

Code Enforcement (703) 228-3232

Housing Division (703) 228-3760

Housing Information Center (703) 228-3765

Neighborhood Services Division (703) 228-3830

Arlington Economic Development (703) 228-0808

www.arlingtoneconomicdevelopment.com

Arlington Convention and Visitors Services (800) 296-7996

www.stayarlington.com

Department of Environmental Services (703) 228-6570

Department of Human Services (703) 228-1300

Department of Parks and Recreation (703) 228-4747

Arlington County Public Library (703) 228-3348



ARLINGTON
VIRGINIA

www.arlingtonva.us

Profile Web page: <https://www.arlingtonva.us/profile>

Profile Data: <https://data.arlingtonva.us/profile>