

Arlington County Climate Action Plan

Civic Federation

6/9/26

Rich Dooley

Director, Climate Policy



Agenda

- Project Team
- Our Changing Climate
- Project Overview and Public Engagement
- Discussion
- Next Steps

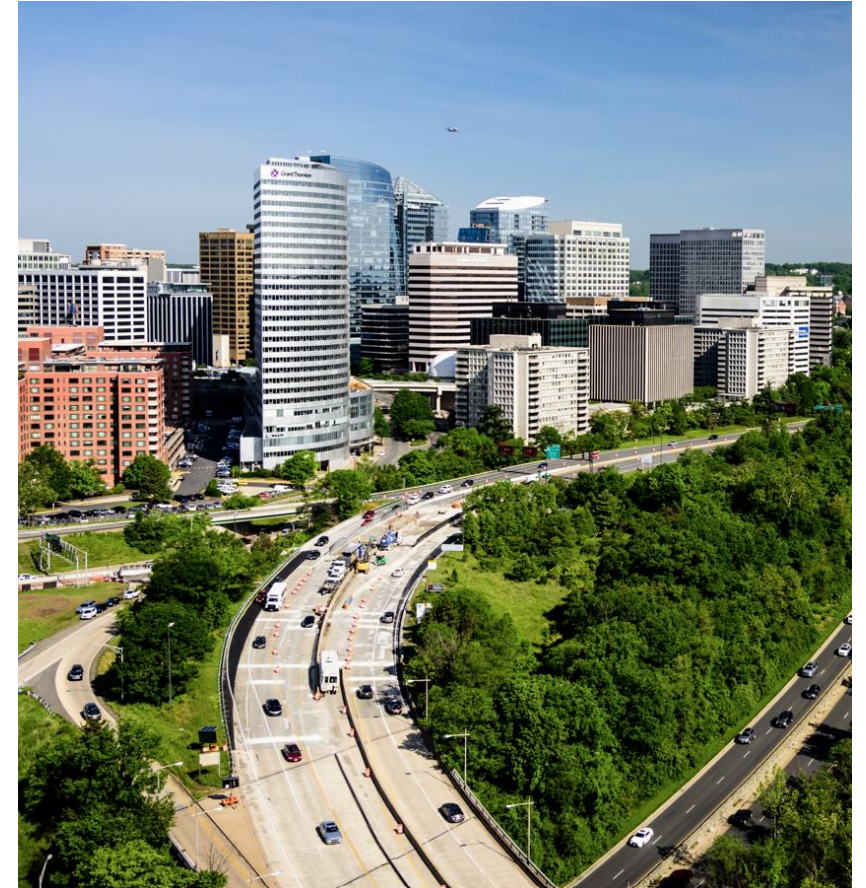
Project Team

Core County Staff Team

- **CPO Project Director:** Jennifer Fioretti
- **CPO Project Manager:** Rich Dooley
- **CPO Climate Communications Specialist:** Rhina Lara
- **DPR Natural Resources Specialist:** Jennifer Soles
- **DES Environmental Management Specialist:** Drew Stilson

AECOM:

- **Principal-in-Charge:** Ida Namur
- **Project Manager:** Laura Cloninger
- **Deputy Project Manager:** Corri Waters
- **Engagement Lead:** Joyce Tsepas



Advisory Groups

External Advisory Group

- Appointed by the County Manager

Chair: Rich Dooley

Co-Chair: Cindy Lewin

- Commissions
- Non-Profit Organizations (At-Large)
- Business (At-Large)

Staff Interdepartmental Working Group

- Comprised of representatives from County departments

Our Changing Climate

Arlington's main climate-related hazards

Rising Regional Temperature

Mean Avg Temperature – Washington Area, DC (ThreadEx)

Use navigation tools above and below chart to change displayed range

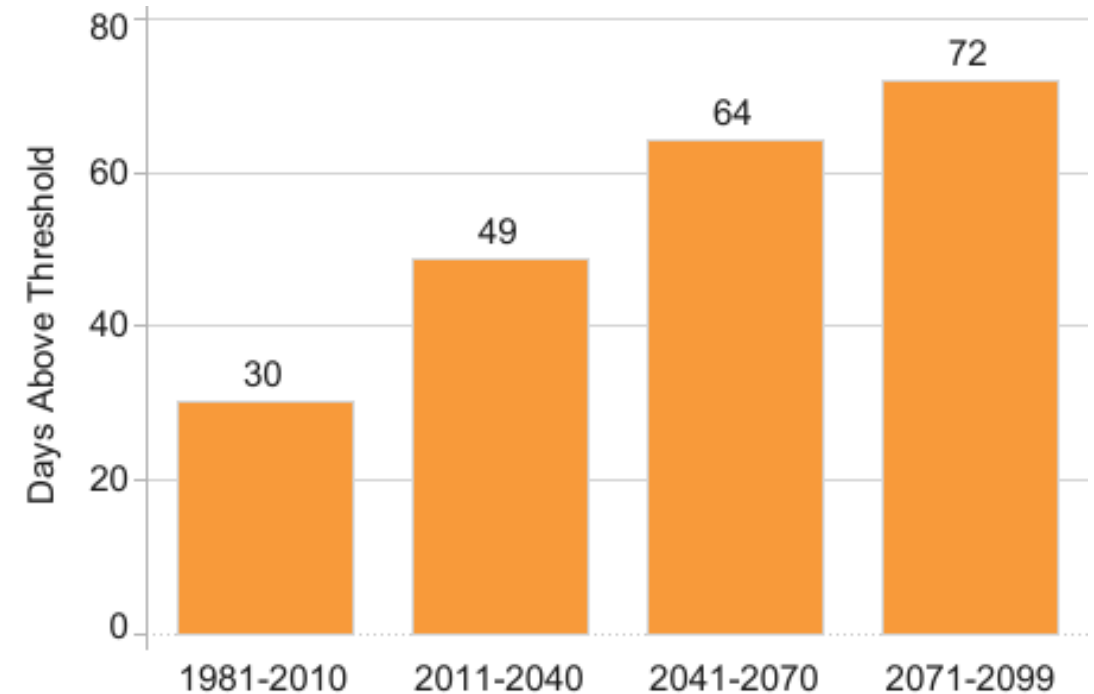


Powered by ACS

Why Extreme Heat Matters

- Regional Reality
 - Anticipate up to 43 extremely hot days in NoVa annually by 2050.
- Infrastructure breakdown
 - Extreme heat expands metal, impacting transit systems
- Public Health Dangers
 - High heat + humidity prevents human body from cooling itself.
 - Drives heat stroke, puts vulnerable residents at immediate risk
- Emergency Services Under Strain
 - Extreme temps drain batteries in life-saving AEDs and damage emergency vehicle electronics.
 - Workers face risk of heat exhaustion

Days above 90 degrees in Washington



Mid-Atlantic RISA
Low emissions scenario

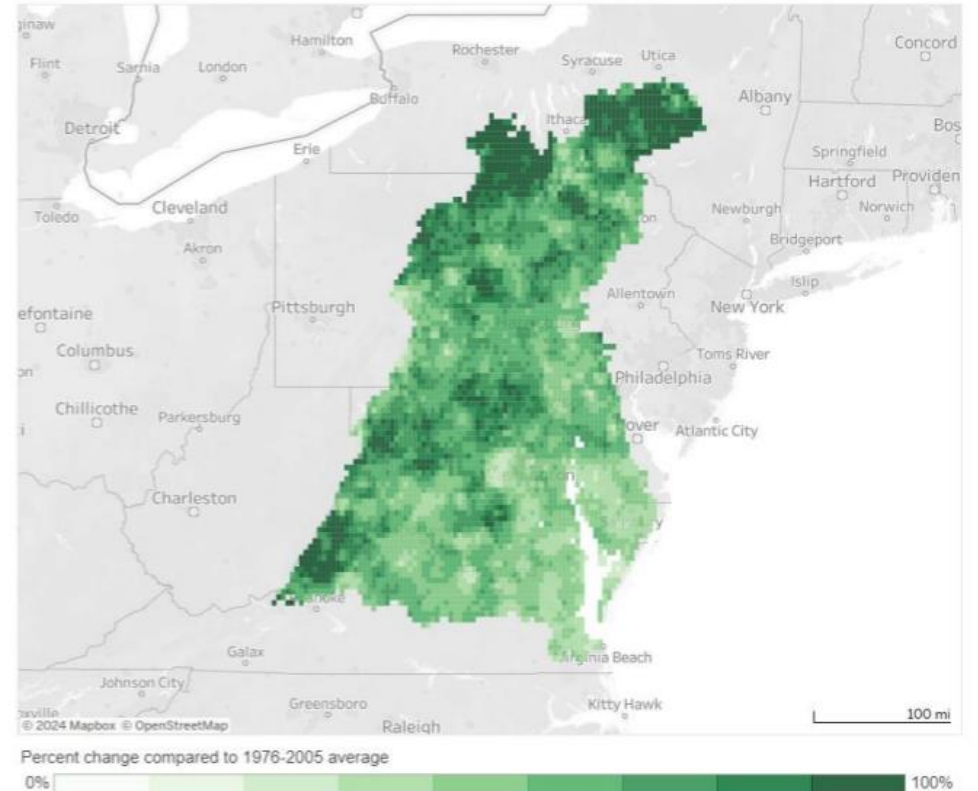


Extreme Rainfall

- Shifting Seasons
 - Cherry blossoms blooming earlier
 - Pollen season starts earlier
- Intensifying Weather
 - Heavy rainfall events becoming more frequent
 - Flooding is increasing
- Rising Seas
 - Over one foot of sea level rise in the last century

Increase in no. of days with >2" of rain by 2100 Moderate emissions

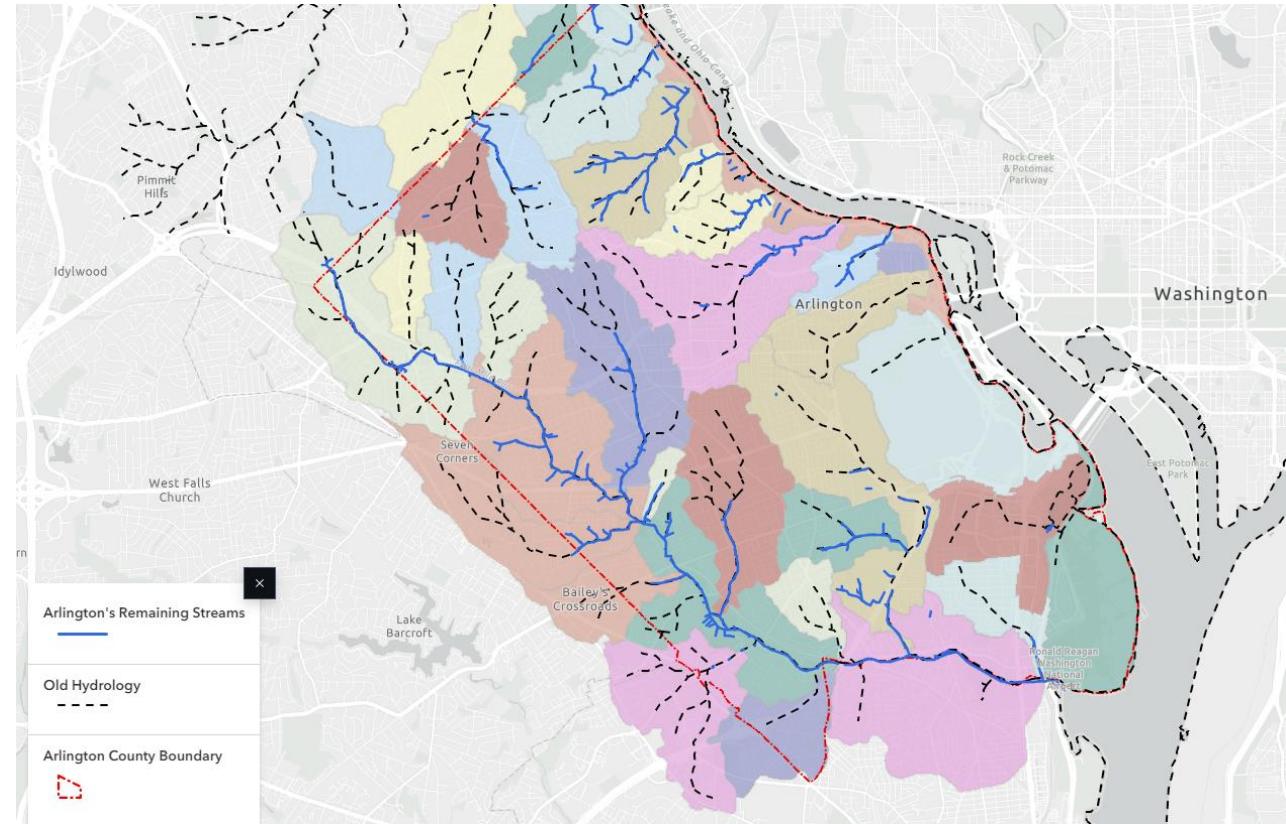
Figure 3b. Projected change in the average annual number of days with precipitation above 2" (2066-2095: Moderate Emissions (RCP 4.5))



Mid-Atlantic RISA

Why Increasing Rainfall Intensity Matters

- 1930s-60s, 60%+ of Arlington's streams were encased in underground stormwater pipes
- Buildings and roads built over former stream valleys and floodplains
- When storm drain capacity is exceeded, floodwaters threaten life, safety, and property
- As rainfall intensity increases, **this flooding occurs more often**
- Arlington's Stormwater Program is investing in flood risk reduction in critical watersheds
- Re-establishing 'overland relief' for floodwaters through voluntary property acquisition a key strategy to reduce flood risk permanently

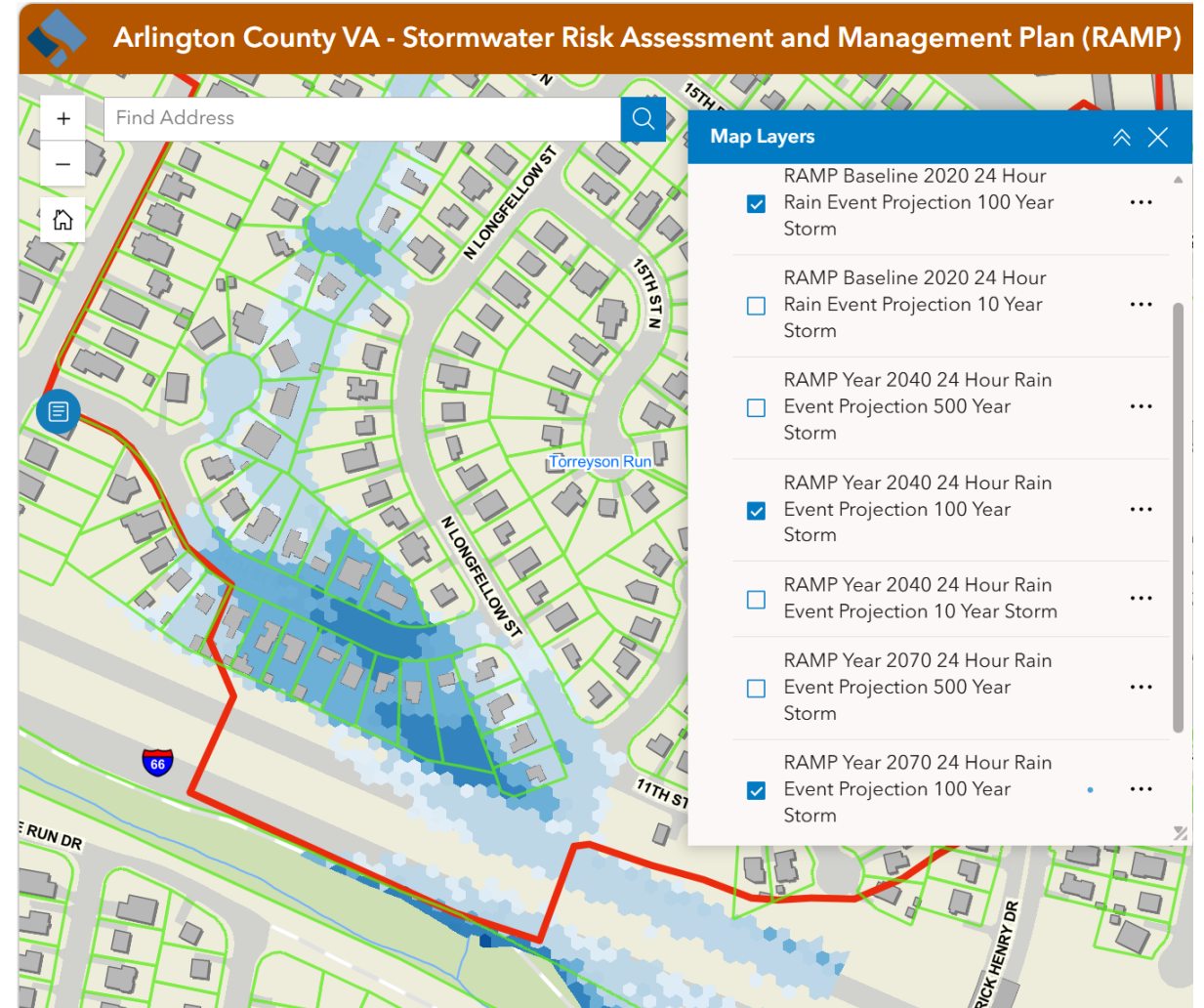


Arlington County

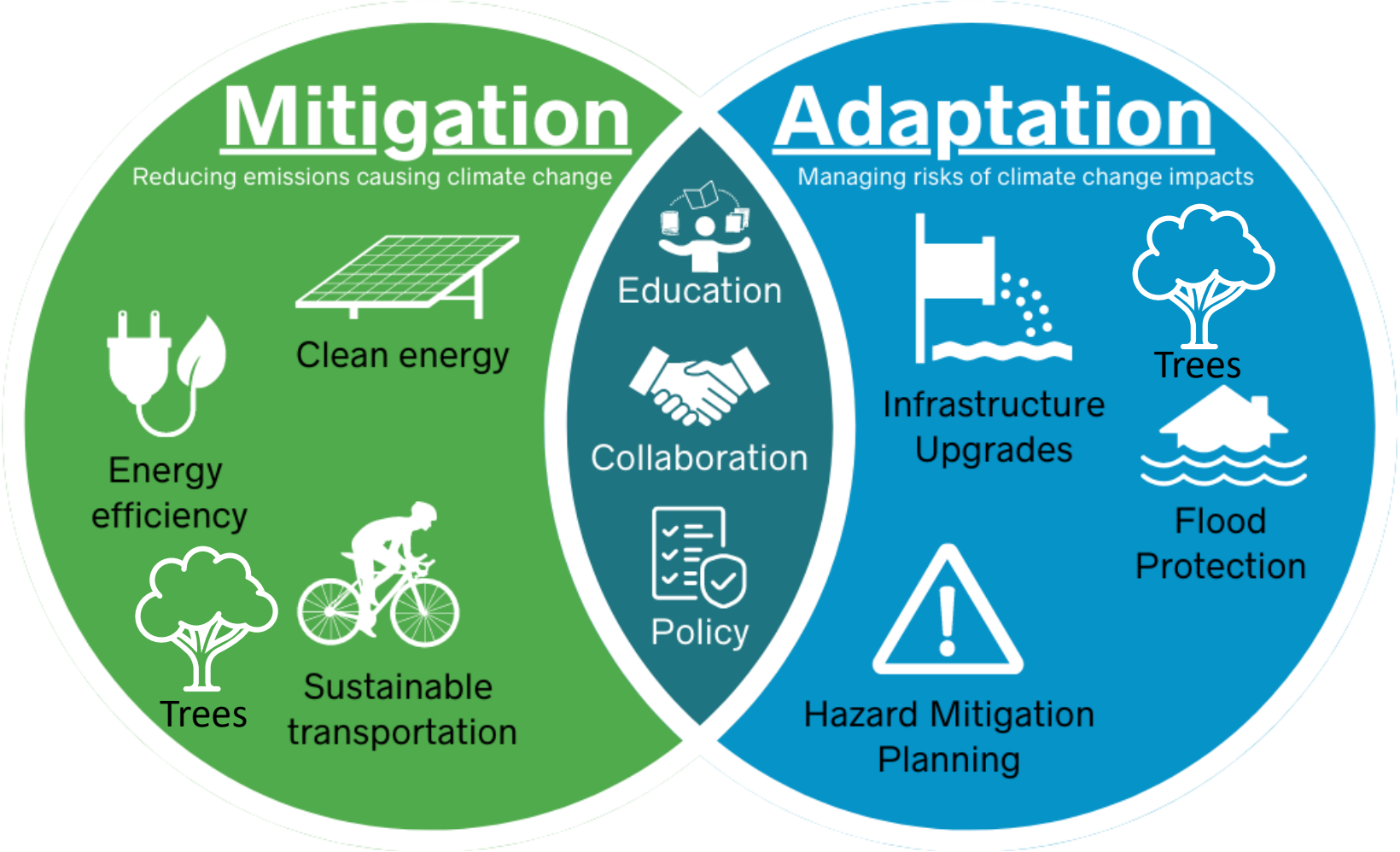
Planning for the Risks of Today and Tomorrow

- Arlington has analyzed local rainfall and made projections for climate change
- We have also modeled where to and to what depth flooding occurs and how it would increase with more intense storm events

[Reduce Your Risk of Flooding – Official Website of Arlington County Virginia Government](#)

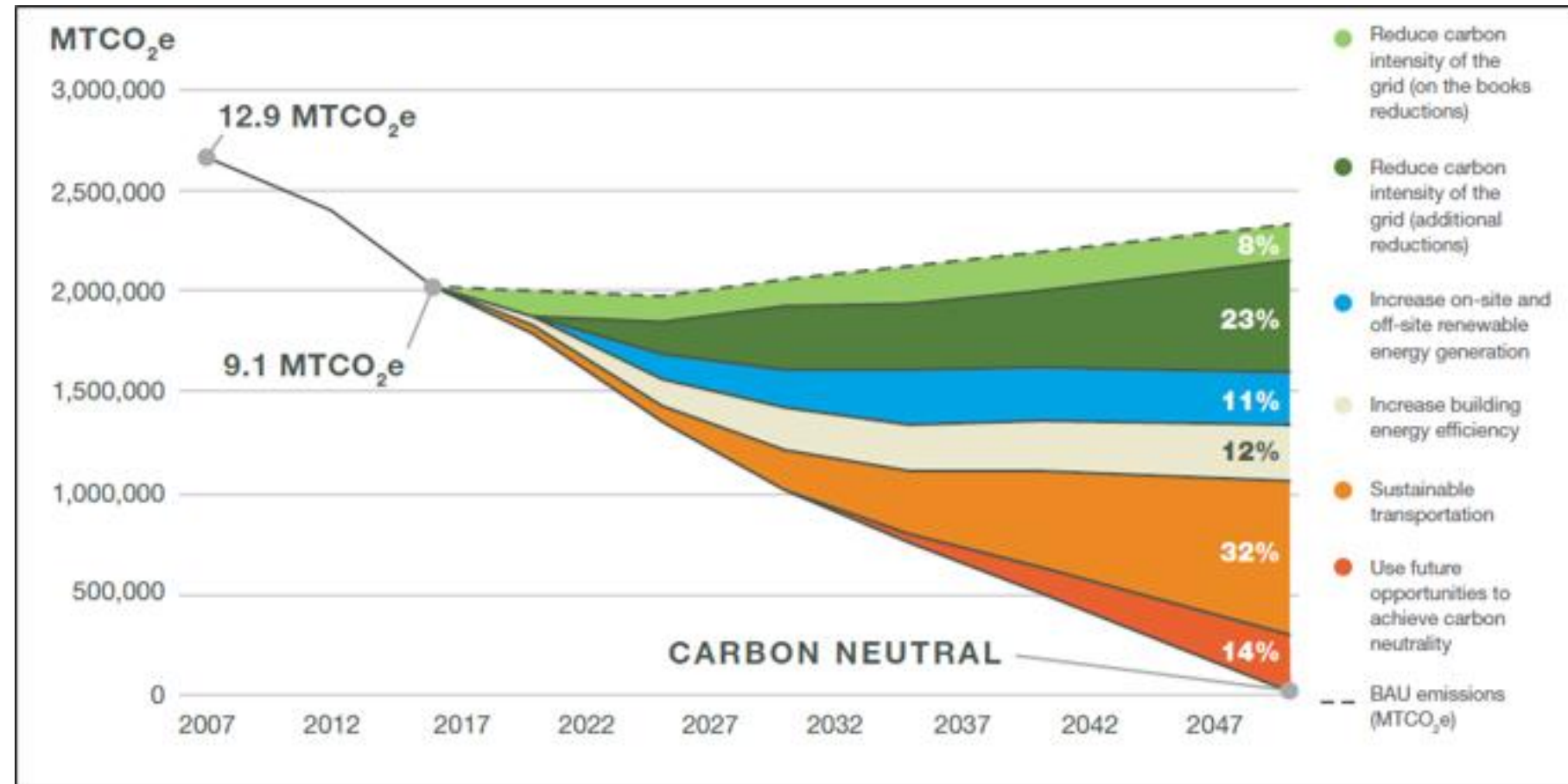


Strategies for Addressing Climate Change



2019 Community Energy Plan: Carbon Neutral Target

- Arlington's 2019 CEP established a target of carbon neutrality by 2050
- Carbon neutrality defined as net-zero GHG emissions



Project Overview

Level-set of Climate Action Plan (CAP)
objectives, key concepts, process

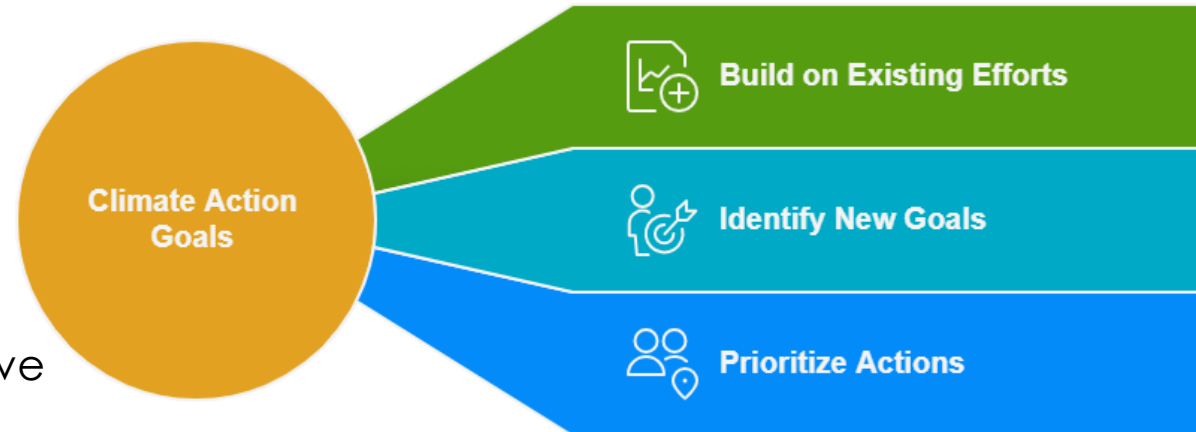
Scope

Purpose

- Update and enhance path to reduce Arlington's GHG emissions and update climate mitigation, adaptation, and resiliency across multiple sectors
- Guides Arlington's whole-of-community, whole-of-government response to climate change

Project Scope

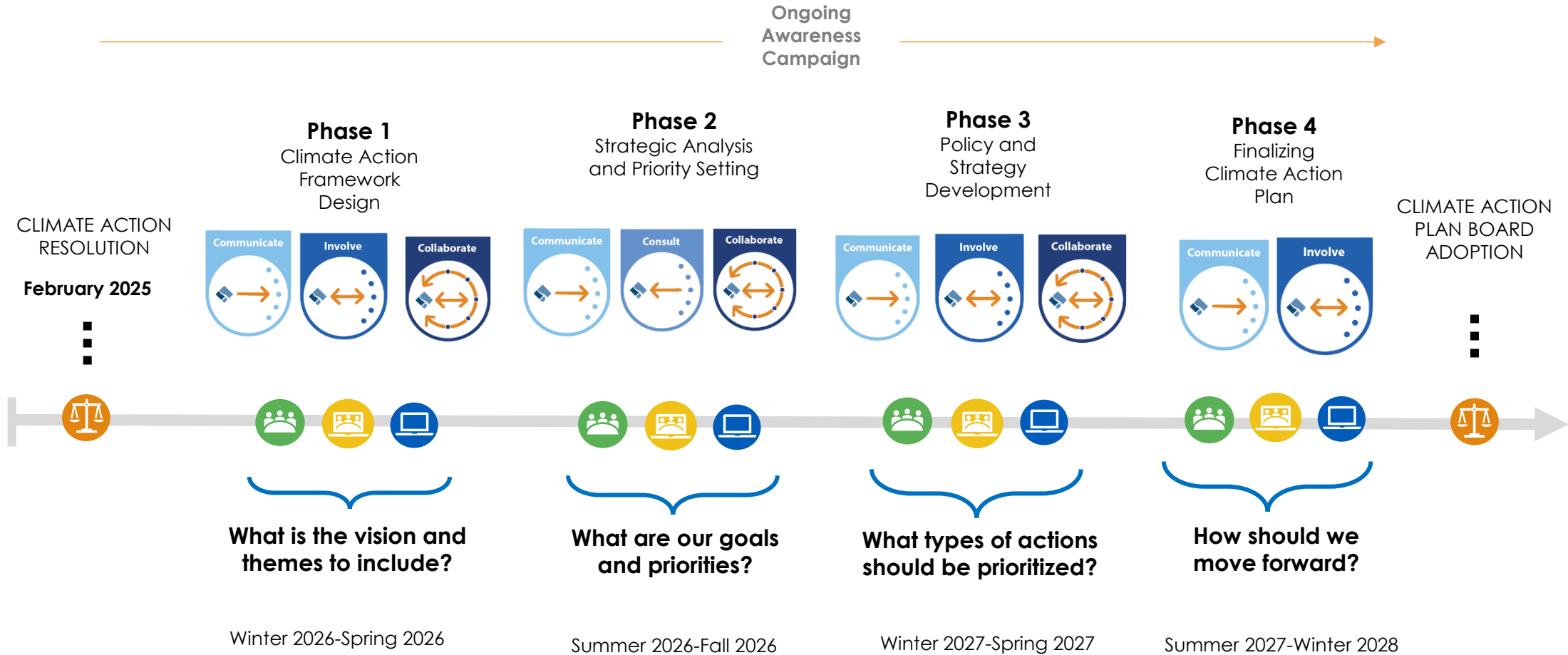
- Updates and expands Community Energy Plan
- Integrated planning process, informed by robust inclusive public engagement that blends existing County policy and plans/programs with new strategic recommendations
- Data-driven approach utilizing GHG reduction forecasts
- Desktop vulnerability assessment
- C40 Cities' Climate Action Selection and Prioritization (ASAP) tool to inform County decision-making



Project Process



Public Engagement Overview



Public Engagement Overview

In-Person Events

- Canvassing
- Pop-up events
- Public Open Houses
- Lunch and Learns

Online Tools

- Climate Action Plan webpage
- Feedback form
- Social media campaign
- E-boards
- Email campaigns

Materials

- Fact sheet and rack card
- Flyers
- Display boards and interactive activities
- Giveaways

Partnerships

- Climate Action Plan Advisory Group
- Commissions and Committees
- Interdepartmental Working Group

Listening Sessions

- Focus groups



Public Engagement Phase # 1

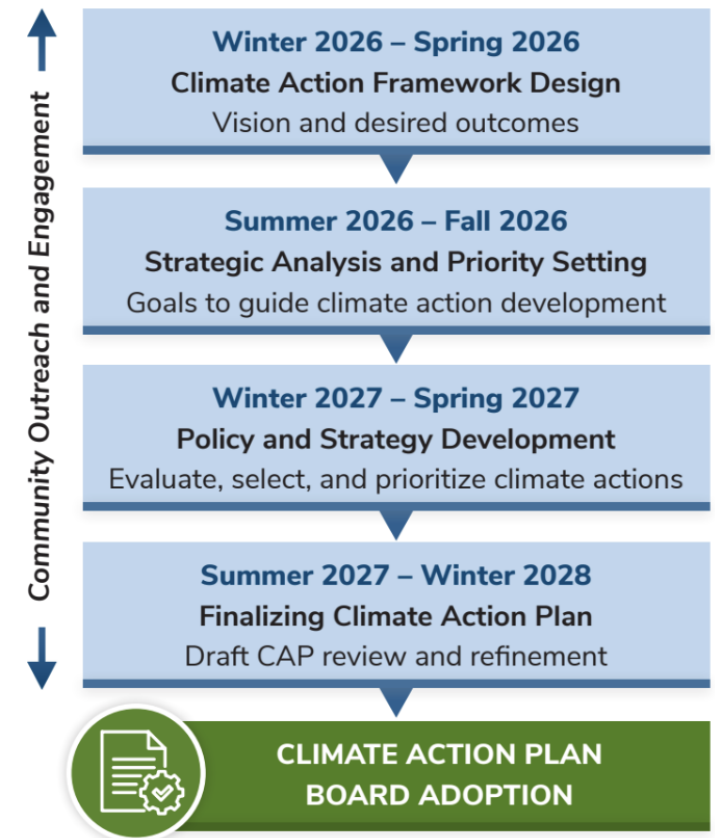
- Public launch of Climate Action Plan at Climate & Cuisine Event on **February 25**
- 6-week Phase 1 public engagement (May-June), including Feedback Form & June 1st Open House
- Phase 1 (of 4) will focus on **Visioning and Desired Outcomes**

Key Information to Convey:

- Why we need a Climate Action Plan
- What the County is currently doing to mitigate climate change
- What individuals can do to live more sustainably
- What Arlington Climate Together is and how the process will unfold

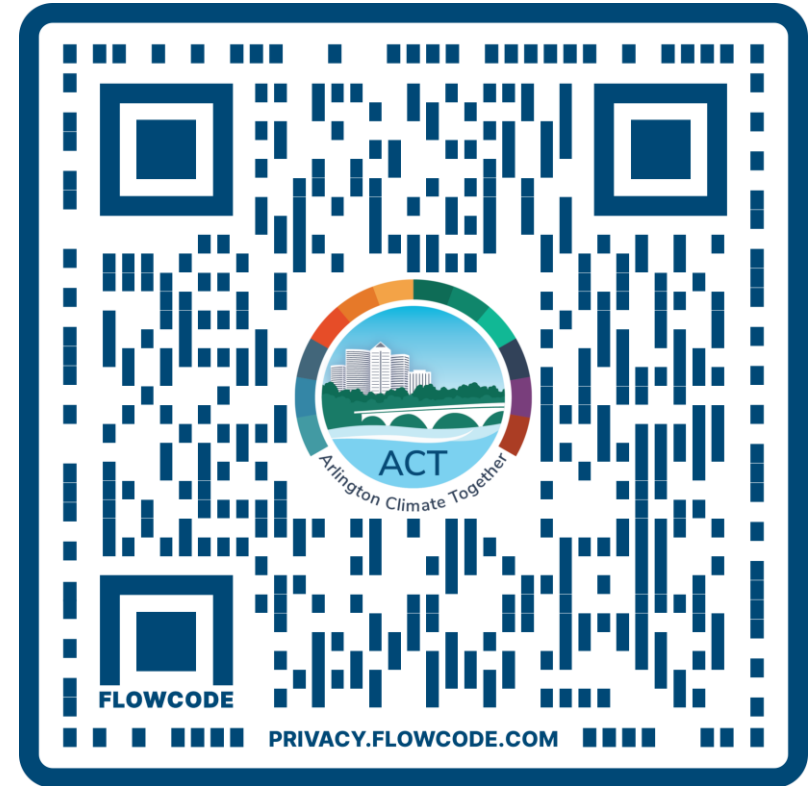
Key Questions to Ask:

- What climate-related issues are most concerning?
- Which areas should the County prioritize MOST in the Plan?
- What does an ideal future for a sustainable Arlington look like?
- How can the County ensure its climate approach supports vulnerable and under-resourced communities?



CAP Feedback Form

- We are asking the community what they think should be included and highlighted in a Climate Action Plan.
- The Feedback Form to gather that information can be accessed via the QR Code to the right.
- The form is live until June 26th.



Next Steps

Next Steps

Spring 2026 – Climate Action Plan Framework Design

- Public Engagement Phase #1 – May-June 2026
 - Canvassing
 - Pop-up events
 - Public Open House – 6/1/26
 - Commission/committee presentations
- Desktop Vulnerability Assessment

Thank you

