

# **Arlington County FY 2011-2016 Capital Improvement Program**

**Civic Federation**

**June 1, 2010**

# CIP Basics

- Comprehensive and prioritized six-year investment plan that covers all County infrastructure and facilities
- Updated every two years; out-years are considered planning years
  - 2010 referenda (November ballot) is key decision
- Funding sources include bonds, master lease and pay-as-you-go (PAYG)
- County Board ultimately adopts both County and APS CIP in a combined CIP

# Successes

- Joint Collaboration with Schools
  - Westover-Reed Library and School - Completed in October 2009
  - Network Operations Center – Expected completion Fall 2010
- Long Bridge Park Outdoor Phase I Groundbreaking – March 2010
- Relocation of Department of Human Services – Expected completion Summer 2010
- Water Pollution Control Plant – Expected completion Spring 2011
- Fire Station 3 – Expected completion late Spring 2011

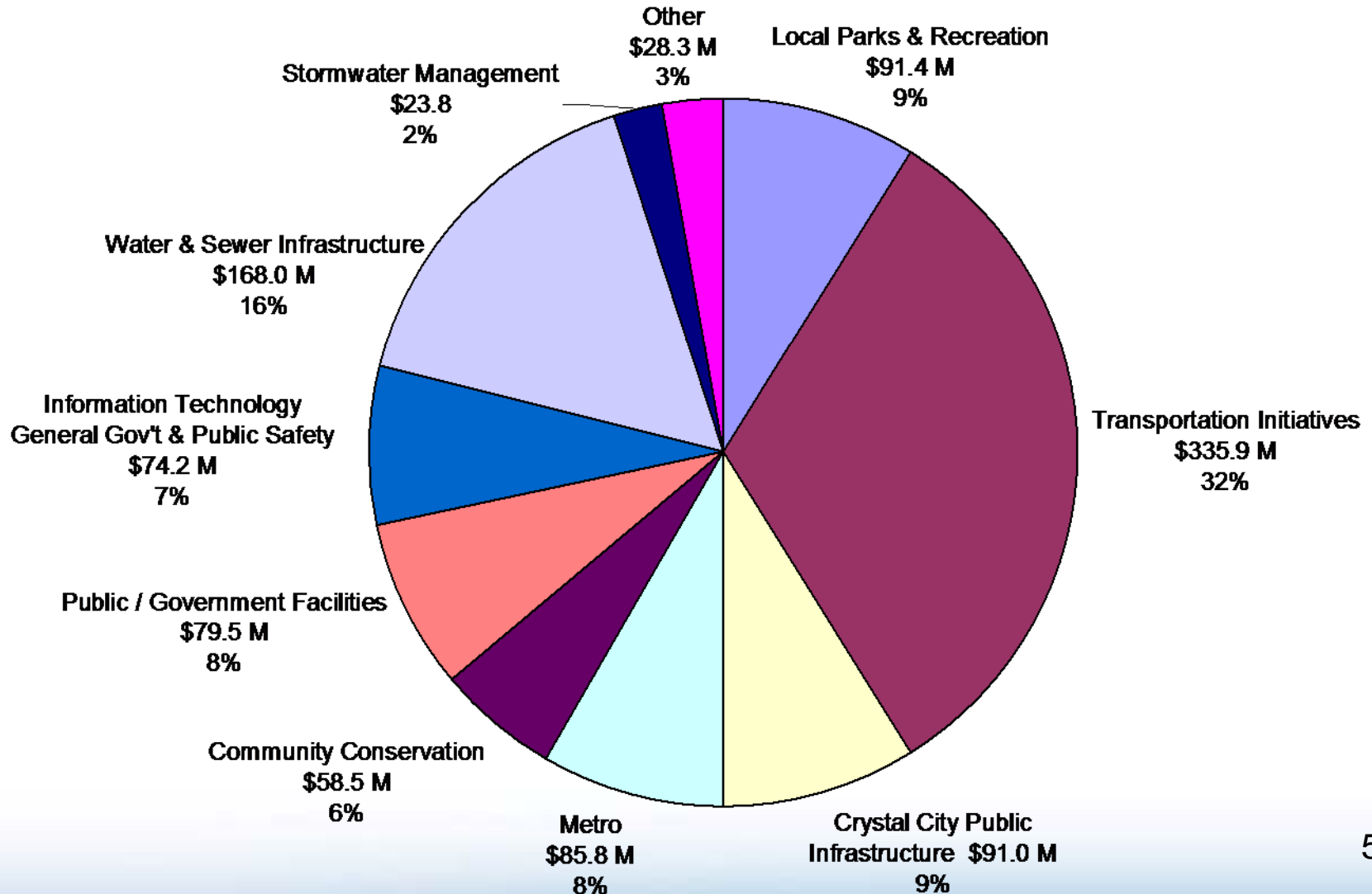
# Proposed CIP Highlights

- Focus on “maintaining what we have”
  - Streets, facilities, parks, technology
- Complete existing commitments
  - Arlington Mill, Long Bridge, transportation
- Inclusion of projects not previously in CIP
  - Ballston Garage, out-year projects
- Maintain County’s AAA rating

# Proposed CIP Summary

## 6 Year Capital Program Costs Summary

### \$1.036 billion



# 2010 Referenda Proposal (in 000's)

Metro	\$20,000	Next Metro Matters funding agreement anticipated Summer 2010
Paving	10,300	Assumes 15-year paving cycle
Neighborhood Conservation	9,000	Same as 2008 funding level
Facilities	2,675	Maintenance capital
Emerging Facilities	4,700	Addresses projects currently in study phase
Parks	3,975	Herndon & 13 <sup>th</sup> ; Rocky Run Park; Maintenance capital
Transportation	3,800	State / fed grant matching; Walk & Bike Arlington; NTC
Land Acquisition	3,690	For open space and general government
<b>Proposed County</b>	<b>\$58,140</b>	
<b>Proposed Schools</b>	<b>\$107,238</b>	Wakefield, fiber, HVAC and roofing
<b>TOTAL</b>	<b>\$165,378</b>	

# 2012 & 2014 Referenda

(for planning purposes)

2012 - \$116,102,000

- Long Bridge
- Metro & other transportation
- Maintenance Capital – various
- Fiber optic

2014 - \$125,233,000

- Metro & other transportation
- Maintenance capital
- Lubber Run Community Center
- Crystal City

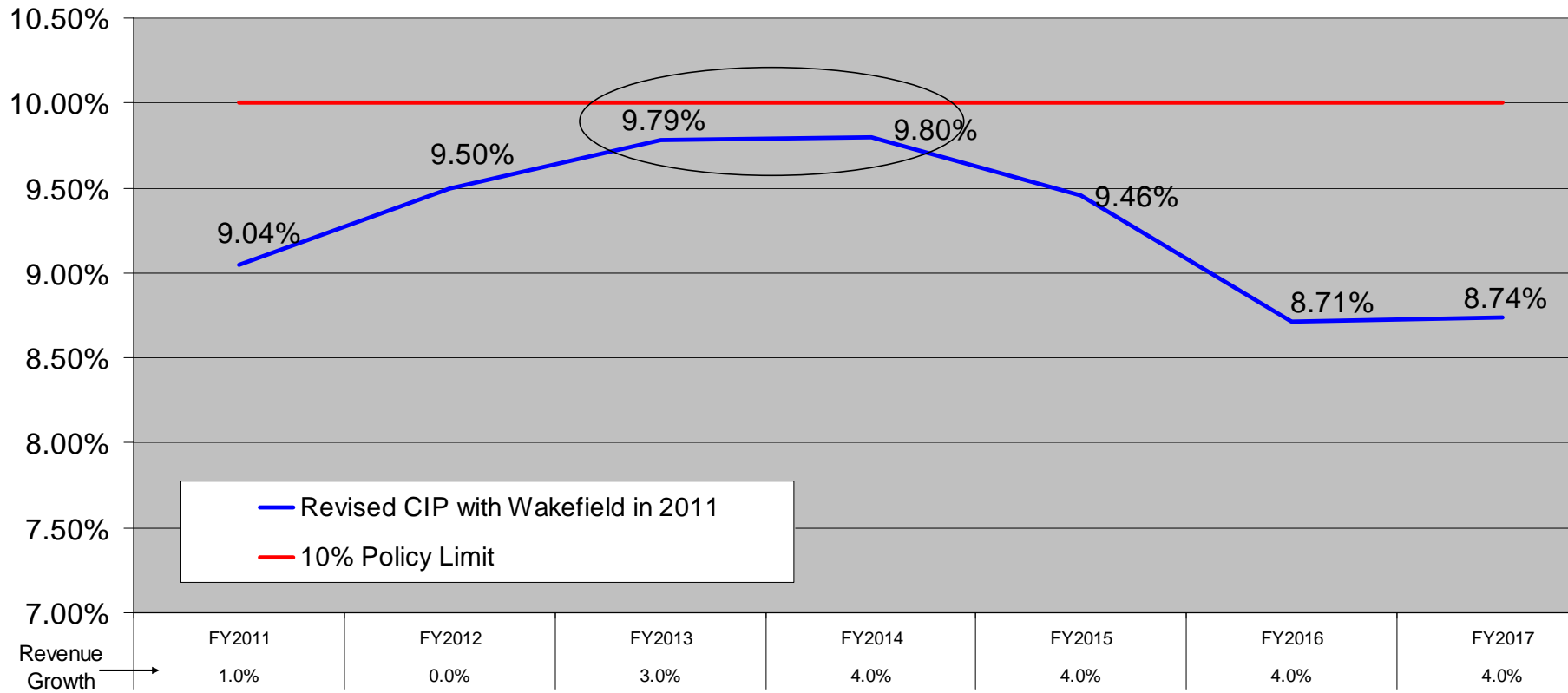
# Remaining County Board Decisions

- On May 11, County Board announced support for Wakefield
  - Immediately affected planning numbers for 2012 referendum
- \$10 million needs to be cut from 2012
  - Three options presented at May 22 worksession
    - Defer/reduce range of projects
    - Defer interchange by Long Bridge Park, plus others
    - Defer Long Bridge Aquatic facility to 2014

# Compliance With Debt Policies

- 1. Ratio of Net Tax-Supported Debt Service to General Expenditures**
  - Should not exceed 10%
  - Peaks at 9.8% in 2013
  
- 2. Ratio of Net Tax-Supported Debt to Market Value:**
  - Should not exceed 4%
  - Peaks at 1.4% in 2012
  
- 3. Ratio of Net Tax-Supported Debt Per Capita to Income:**
  - Should not exceed 6%
  - Peaks at 5.0% in 2011
  
- 4. Growth in debt service should be sustainable with projected growth in revenues and not exceed 10-year average historical revenue growth**
  - 10 year historical revenue growth (6.2%)
  - Based on October 2009 County Board budget guidance in early years

### Combined County-Schools Debt Service as % of General Expenditures



Reflects proposed \$10 million reduction in 2012 referenda

# PAYG Funding

- Proposed CIP reflects PAYG funding of \$12 - \$14.5 million annually:
  - current base funding in budget of \$5.9 million
  - Historical PAYG funding from one-time sources
- Funds costs not eligible for bond / lease financing.
- Most flexible funding source.

# Proposed Schedule

- April 30 – County CIP document distributed
- May 11 – County Board worksession
- May 11 – June 3 – Commission Briefings
- May 22 – Public hearing at County Board meeting & worksession
- June 12 / 15 – County Board adoption of CIP
- July 10 / 13– County Board adoption of November 2010 bond referenda

Schools' CIP released on May 6; School Board adoption scheduled for June 3

# Appendix

# Proposed 2012 Referenda

<b>2012 REFERENDA (in 000's)</b>	
	<b>Proposed CIP</b>
<b>Parks Maintenance Capital</b>	4,000
Tyrol Hills Park	1,575
Old Jeff Davis Highway - Boundary Channel Interchange	8,000
Long Bridge Aquatics & Fitness Facility	31,827
<b>Subtotal Parks</b>	<b>45,402</b>
<b>Paving</b>	<b>11,200</b>
Match for State & Federal Grants	2,500
WALKArlington, Bike Arlington & NTC	1,300
Shirlington Road Bridge Renovation	200
<b>Subtotal Transportation</b>	<b>15,200</b>
<b>Metro</b>	<b>20,000</b>
Penrose Square	3,350
Neighborhood Conservation	9,000
Land Acquisition	5,000
<b>Subtotal Community Conservation</b>	<b>17,350</b>
Facilities Maintenance Capital	4,150
Emerging Facilities Infrastructure	4,500
Courthouse Square	2,500
<b>Subtotal Public / Government Facilities</b>	<b>11,150</b>
Fiber Optic Network	7,000
<b>TOTAL</b>	<b>116,102</b>

# Proposed 2014 Referenda

<b>2014 REFERENDA (in 000's)</b>	
	<b>Proposed CIP</b>
Parks Maintenance Capital	4,875
Long Bridge Outdoor Improvements - Phase 2 design	2,575
<b>Subtotal Parks</b>	<b>7,450</b>
Paving	11,200
Match for State & Federal Grants	2,500
WALKArlington, Bike Arlington & NTC	1,300
Crystal City Public Infrastructure	20,250
Shirlington Road Bridge Renovation	2,000
<b>Subtotal Transportation</b>	<b>37,250</b>
<b>Metro</b>	<b>20,000</b>
Nauck Town Square and Infrastructure	4,150
Neighborhood Conservation	9,000
Land Acquisition	12,500
<b>Subtotal Community Conservation</b>	<b>25,650</b>
Facilities Maintenance Capital	13,411
Lubber Run Community Center	18,000
Emerging Facilities Infrastructure	972
Courthouse Square	2,500
<b>Subtotal Public / Government Facilities</b>	<b>34,883</b>
<b>TOTAL</b>	<b>125,233</b>

# Neighborhood Conservation

## Historic Funding Levels

