



# Curbside Recycling Update

November 10, 2009  
Civic Federation Meeting

Erik Grabowsky  
Arlington County  
Department of Environmental Services  
Utilities and Environmental Policy  
Solid Waste Bureau



# Keys to Success



- Participation
- Generation





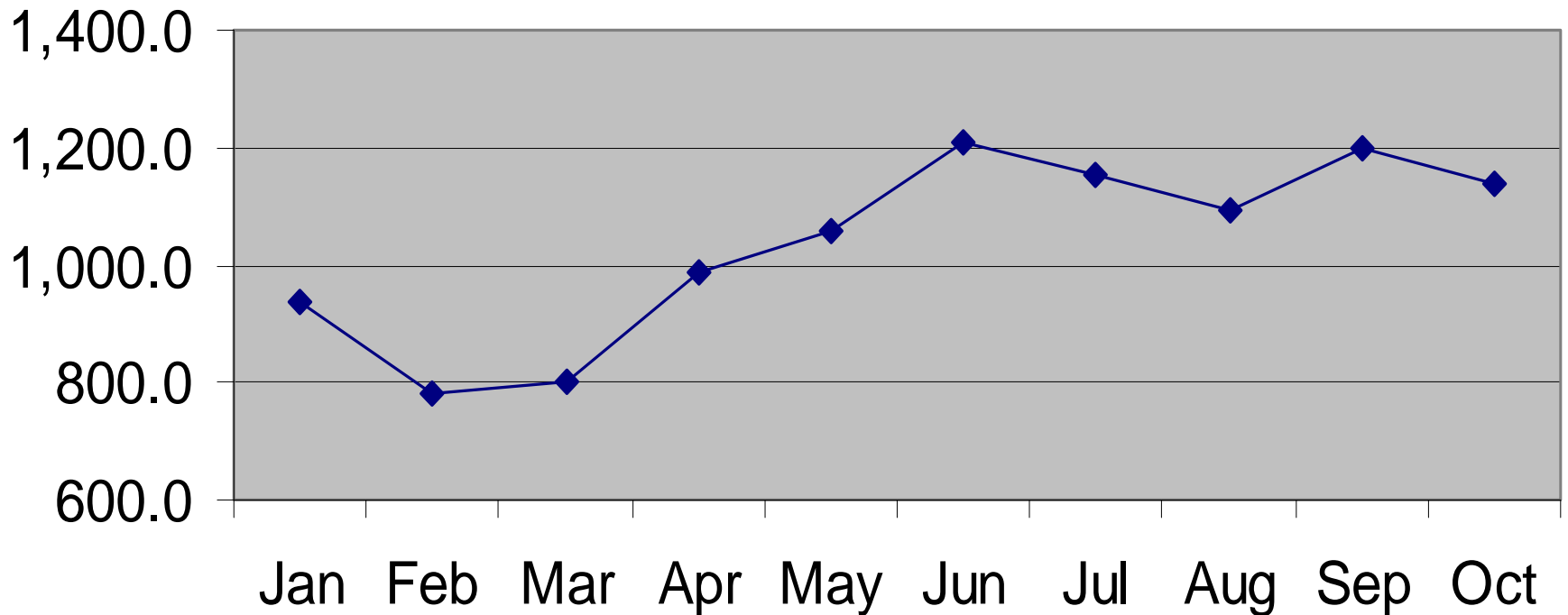


# 2009 Recycling Tonnages



Recycling up 20% since April 2009

## 2009 Recycling

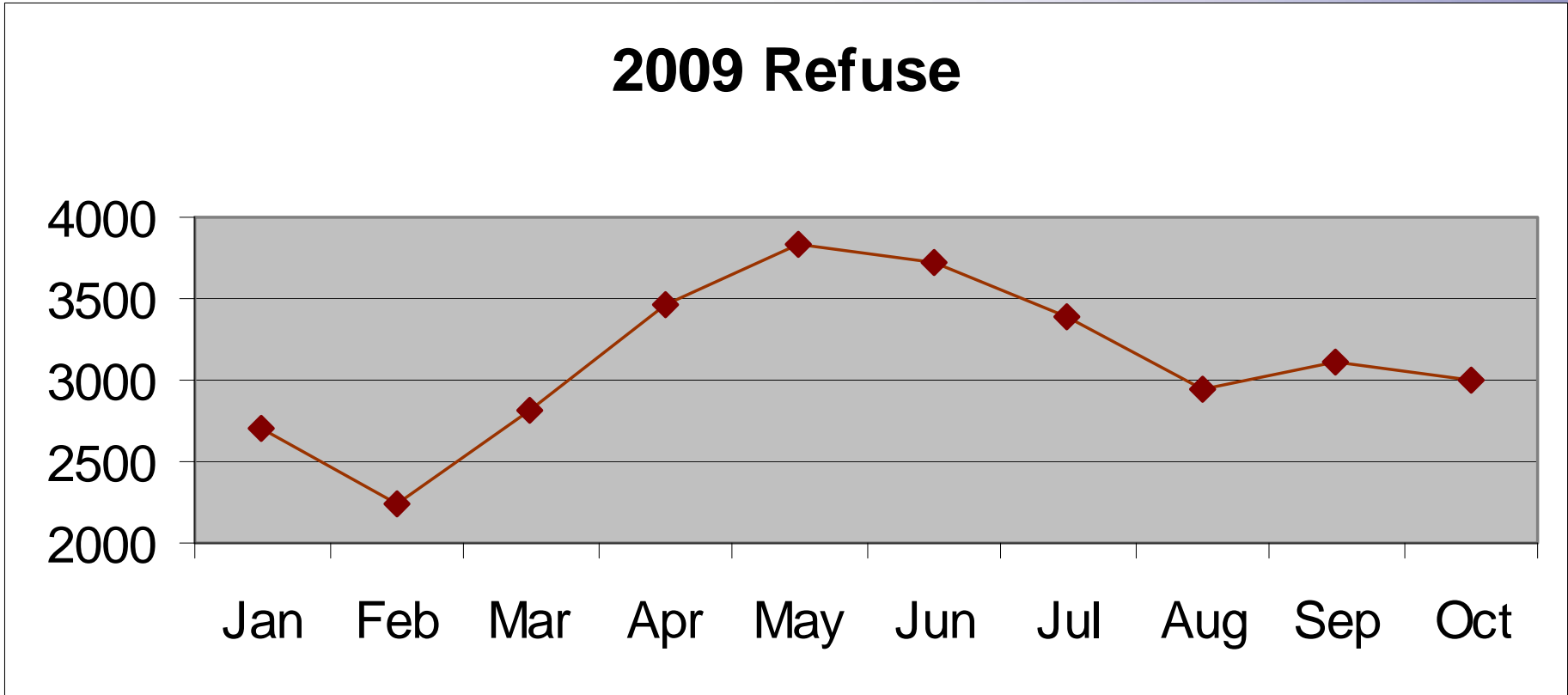




# 2009 Refuse Tonnages



Refuse down 10% since April 2009

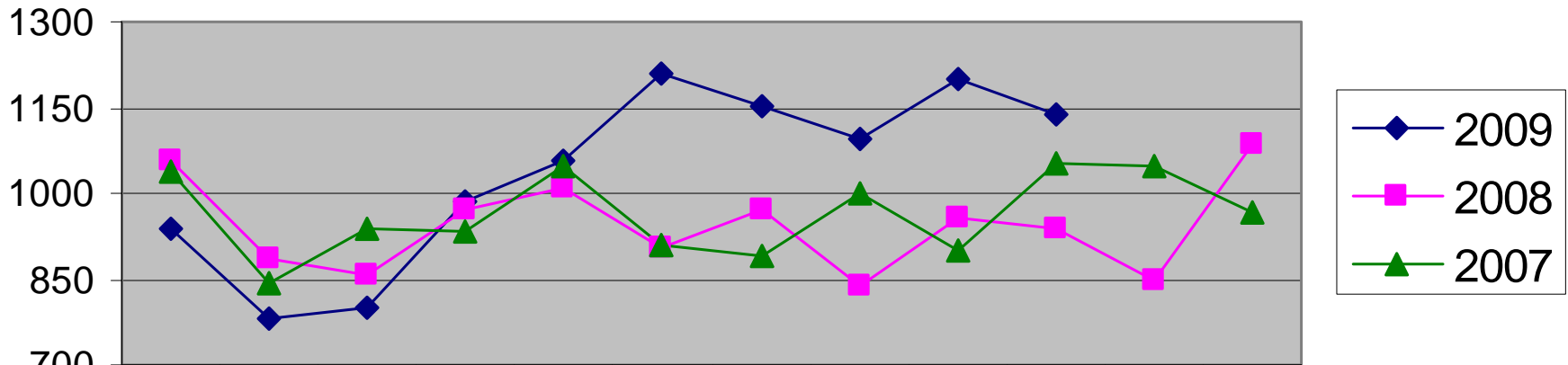




# Recycling Over time



## Curbside Residential Recycling Tonnage



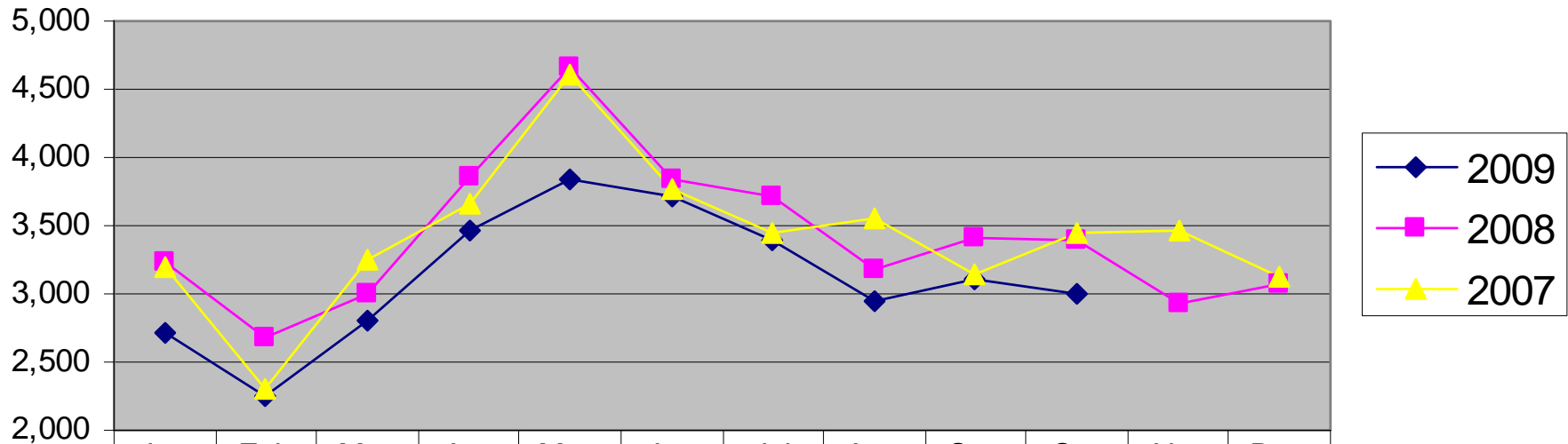
	Jan	Feb	Mar	Apr	May	Jun	Jul	Aug	Sep	Oct	Nov	Dec
2009	936	780	802	985	1056	1209	1153	1093	1201	1138		
2008	1057	884	859	972	1007	903	973	840	957	940	848	1084
2007	1038	845	940	934	1047	909	891	1001	902	1053	1046	968



# Refuse Over time



## Residential Curbside Refuse Tonnage



	Jan	Feb	Mar	Apr	May	Jun	Jul	Aug	Sep	Oct	Nov	Dec
—◆— 2009	2,712	2,242	2,807	3,458	3,839	3,715	3,393	2,938	3,107	2,998		
—■— 2008	3,223	2,672	2,999	3,849	4,656	3,843	3,713	3,179	3,412	3,396	2,925	3,080
—▲— 2007	3200	2298	3243	3657	4612	3765	3450	3547	3147	3444	3460	3121



# Commodity Pricing (\$72 per ton processing fee)

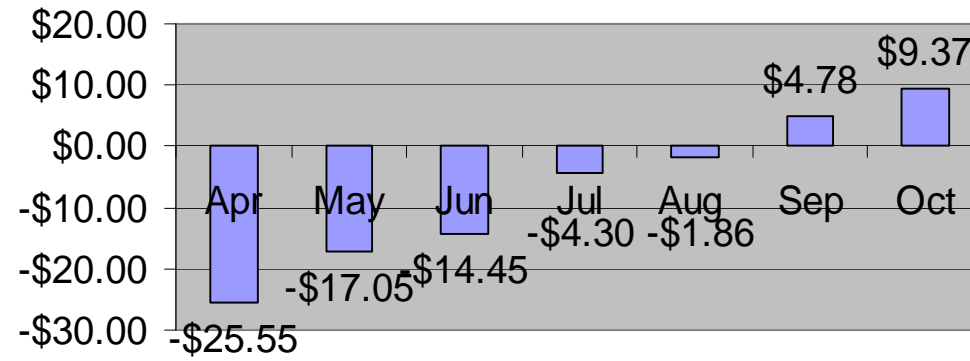


## October 2009

	Index Price	%	Value as %
Aluminum Can	\$1240	0.93%	\$11.53
Steel Cans	\$140	0.22%	\$0.31
Mixed Plastic	\$370	5.01%	\$18.54
Mixed Glass	\$25	20.02%	\$5.01
Old News Print	\$80	39.80%	\$8.83
#11 OCC	\$70	12.62%	\$10.10
Mixed Paper	\$60	13.33%	\$9.33
Residue	\$0	7.59%	\$0.00
<b>Total</b>			<b>\$85.39</b>
<b>Processing Fee</b>			<b>\$72.00</b>
<b>Cost/ton</b>			<b>\$-13.39</b>
<b>Total Cost/ton</b>		70% of cost/ton	<b>\$-9.37</b>

The Curbside Recycling Program generated \$9.37/ton in Oct

## Single Stream Per ton Recycling





# Cost Breakdown



Oct 2009 Recycling vs Refuse Costs/Month/Ton			
	Collection/ month	Processing/ ton	Total Cost/ton
Refuse	\$5.84	\$79.00	\$168
Recycling	\$4.55	(\$9.37)	\$135
Difference	\$1.29	\$88.37	<b>\$33</b>

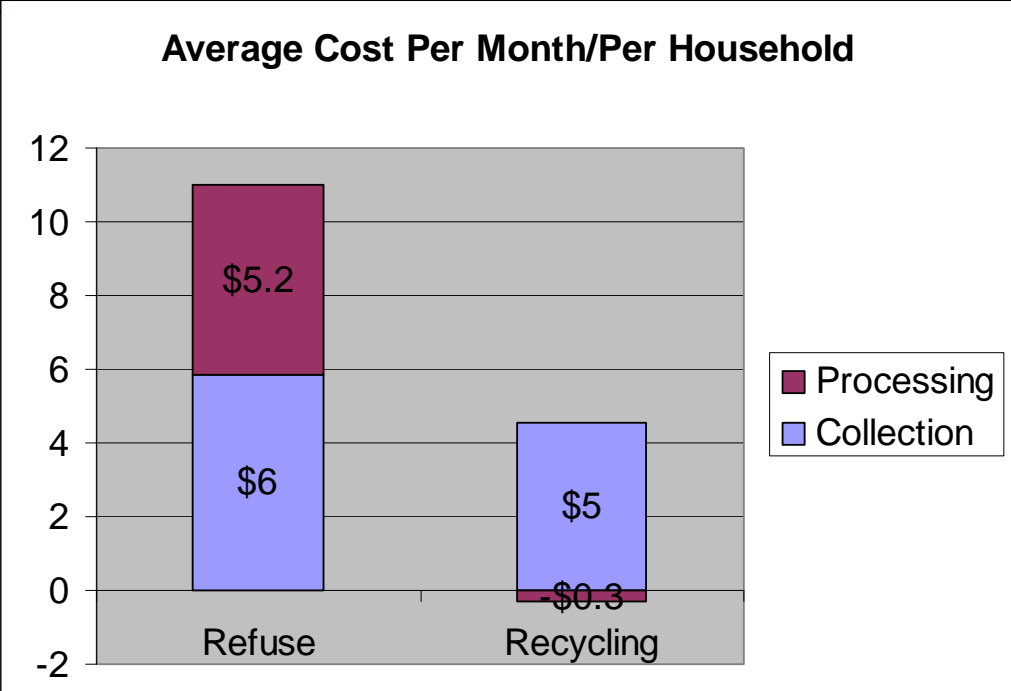
Recycling costs  
**\$33/ton less**  
than trash



We **receive \$9/ton** for  
Recycling

And

We **pay \$79/ton** for  
Trash

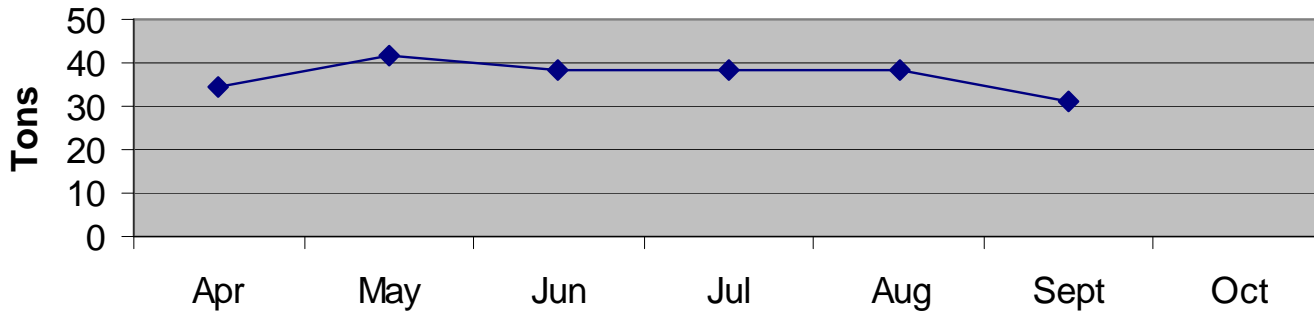




# Metal/Electronics Recycling



## Curbside Scrap Metal Collection



## Metal Costs

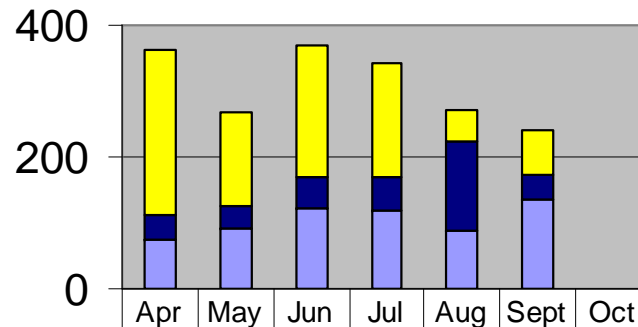
- \$22 1<sup>st</sup> item
- \$10 for each additional

## Ewaste Costs

- \$20 tvs
- \$15 monitors

## Curbside Ewaste Collection

Number collected



- Other Ewaste Requests
- Monitors
- TVs

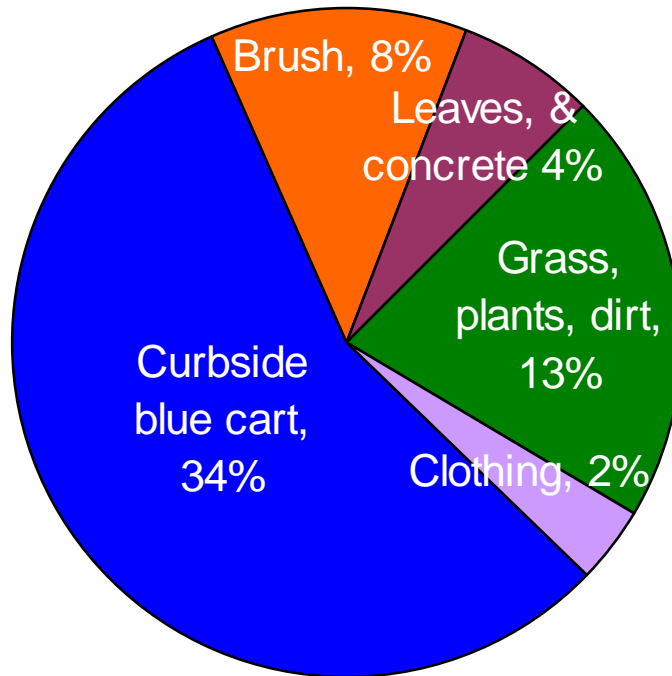
■ Other Ewaste Requests	252	143	201	172	45	67	
■ Monitors	36	36	47	49	137	38	
■ TVs	75	90	121	120	88	134	



# Waste Audit



## Recycling Found in the Trash October 2009



### Curbside Blue Cart

Mixed Recyclable Paper	14%
Cardboard	6%
Film Plastic	5.2%
Newspaper/Mags	2%
Plastic Bottles (Clear)	1.4%
Plastic wide mouth (#3-7)	1.2%
Other Plastics (rigid)	1.1%
Asceptic Containers (milk cartons)	1%
Empty aerosol cans	1%
Aluminum Foil/Plates	0.3%
Glass Bottles/Jars	0.8%



# Adopt-A-Street



## Adopt-a-Street

Do something positive for the community by volunteering to keep your neighborhood clean.



Individuals or groups can Adopt-A-Street, performing quarterly clean up duties:

- Sweep the curb & gutter lines
- Remove litter
- Report any hazardous conditions in the area (street light outages, potholes, etc.)

**Make a difference in your environment!** Your efforts will greatly reduce the amount of sediment and litter accumulating along the curb and gutter line, preventing it from going into the storm drains and polluting the Potomac River and other valuable waterways and natural habitats.

Adopt Now at [www.arlingtonva.us/des](http://www.arlingtonva.us/des)  
or call 703-228-6570 for more info



# 26<sup>th</sup> street Leaf site



- Use Permit
  - 5 Year extension
  - On the November 14, 2009 Board Meeting Agenda
- Conditions of Use
  1. Not used for surface parking
  2. Hours of operation 7:00 am - 5:30 pm, Mon - Sat.
  3. Any use of the site shall be preceded by advance written notification to the neighborhood advisory committee
  4. The County agrees to facilitate the establishment of a neighborhood advisory committee to address any concerns related to the facility
  5. Leaf storage and transfer begins late October of each year and completed by the end of February
  6. Paved portion of the site shall be thoroughly cleaned at the end of each leaf collection season



# Leaf Season 2009



Each civic association will receive **two vacuum passes** and **weekly bag collection service**.

Residents have three options to recycle leaves this fall:



- **Compost leaves and yard waste** at home
- Place leaves in **biodegradable bags**
- Rake leaves to the curb for **vacuum collection**.

Key dates for the 2009-10 leaf season are:



- **Oct. 12:** Leaf Season brochures distributed on refuse carts
- **Oct. 19:** Biodegradable bags available
- **Nov. 2 - Jan. 15:** Bag collection
- **Nov. 13 - Dec 24:** Vacuum collection



Thank you!

Questions?

